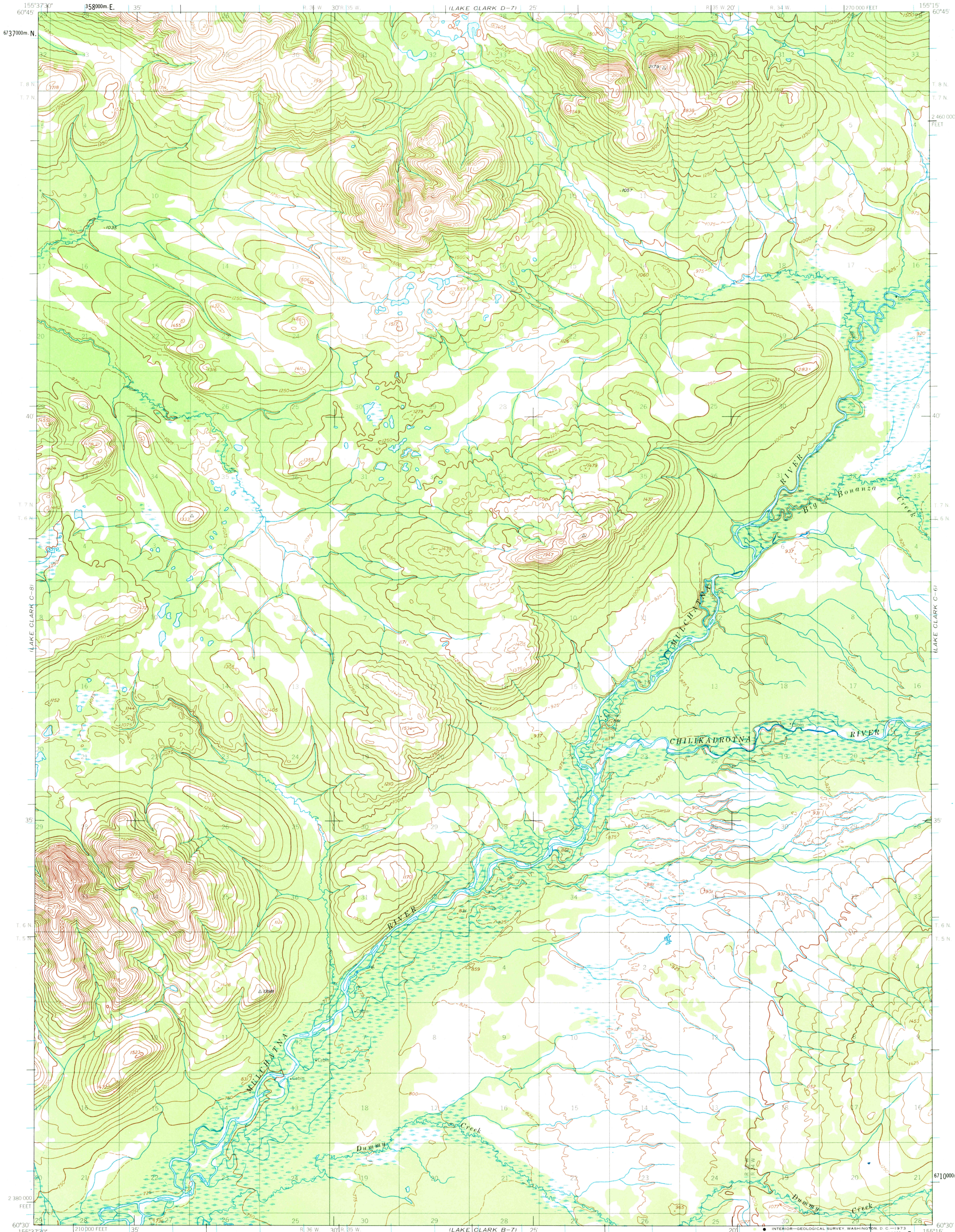


UNITED STATES
DEPARTMENT OF THE INTERIOR
GEOLOGICAL SURVEY

LAKE CLARK (C-7) QUADRANGLE
ALASKA
1:63 360 SERIES (TOPOGRAPHIC)



Maped by the Army Map Service
Published for civil use by the Geological Survey

Control by USC&GS and USCE

Topography by photogrammetric methods from aerial photographs
taken 1953 and 1957, field annotated 1954. Map not field checked

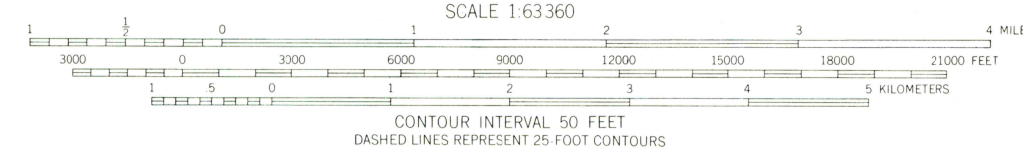
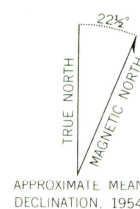
Universal Transverse Mercator projection, 1927 North American datum

10,000-foot grid based on Alaska coordinate system, zone 5

1000-meter Universal Transverse Mercator grid ticks,
zone 5, shown in blue

Land lines represent unsurveyed and unmarked locations
predetermined by the Bureau of Land Management

Folio S-11, Seward Meridian



ROAD CLASSIFICATION
No roads or trails in this area

AUG 24 1953

LAKE CLARK (C-7), ALASKA
N6030-W15515/15X22.5

1954

FOR SALE BY U.S. GEOLOGICAL SURVEY
FAIRBANKS, ALASKA, 99701, DENVER, COLORADO, 80225 OR WASHINGTON, D. C. 20242
A FOLDER DESCRIBING TOPOGRAPHIC MAPS AND SYMBOLS IS AVAILABLE ON REQUEST

USGS
Historical File
Topographic Division