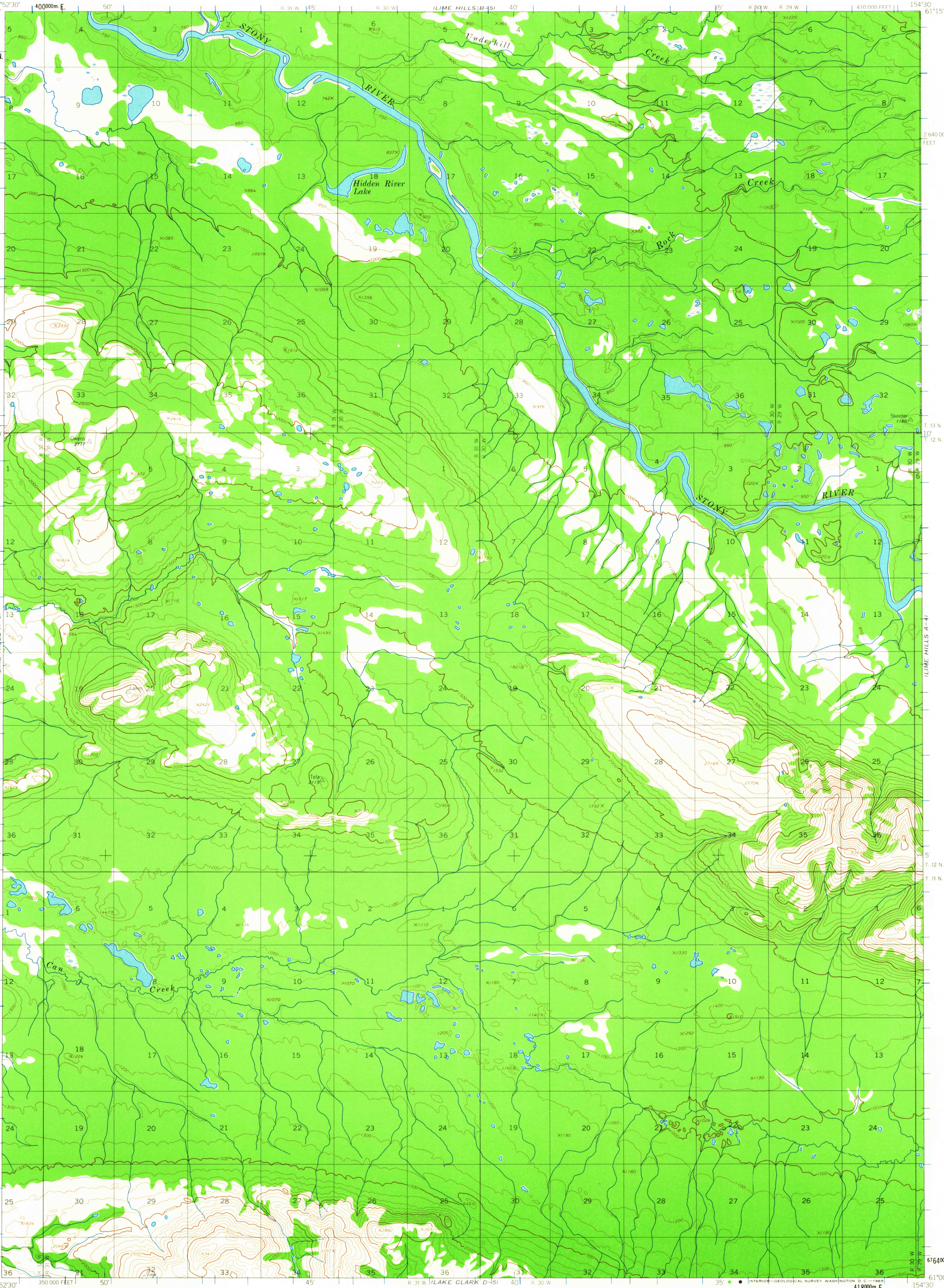
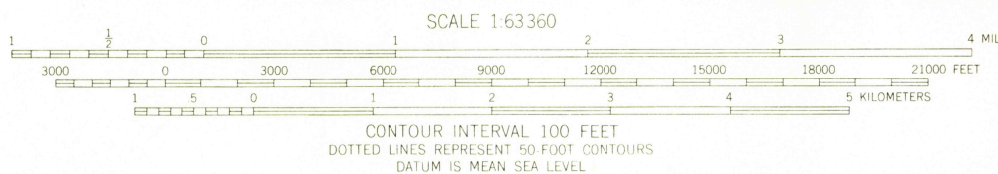


UNITED STATES
DEPARTMENT OF THE INTERIOR
GEOLOGICAL SURVEY

LIME HILLS (A-5) QUADRANGLE
ALASKA
1:63 360 SERIES (TOPOGRAPHIC)



Mapped by the Army Map Service
Edited and published by the Geological Survey
Control by USC&GS and USCE
Topography by photogrammetric methods from aerial photographs
taken 1953 and 1957, field annotated 1954. Map not field checked
Universal Transverse Mercator projection, 1927 North American datum
10,000 foot grid based on Alaska coordinate system, zone 5
1000-meter Universal Transverse Mercator grid ticks,
zone 5, shown in blue
Land lines represent unsurveyed and unmarked locations
predetermined by the Bureau of Land Management
Folio S-12, Seward Meridian



ROAD CLASSIFICATION
No roads or trails in this area

FOR SALE BY U.S. GEOLOGICAL SURVEY
FAIRBANKS, ALASKA, DENVER 25, COLORADO OR WASHINGTON 25, D.C.
A FOLDER DESCRIBING TOPOGRAPHIC MAPS AND SYMBOLS IS AVAILABLE ON REQUEST

LIME HILLS (A-5), ALASKA
N6100-W15430/15X22.5
1954

USGS
Historical File
Topographic Division

APR 14 1965