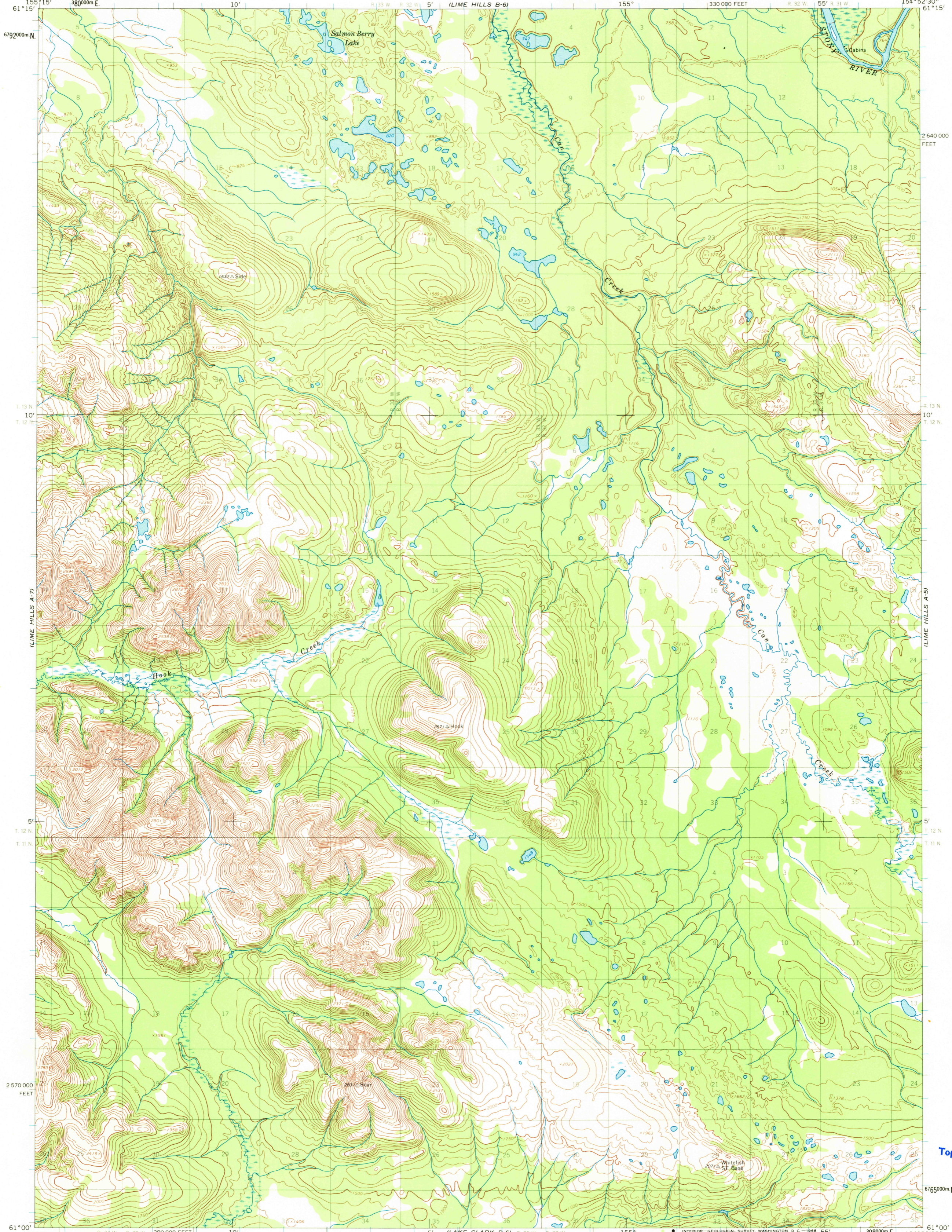
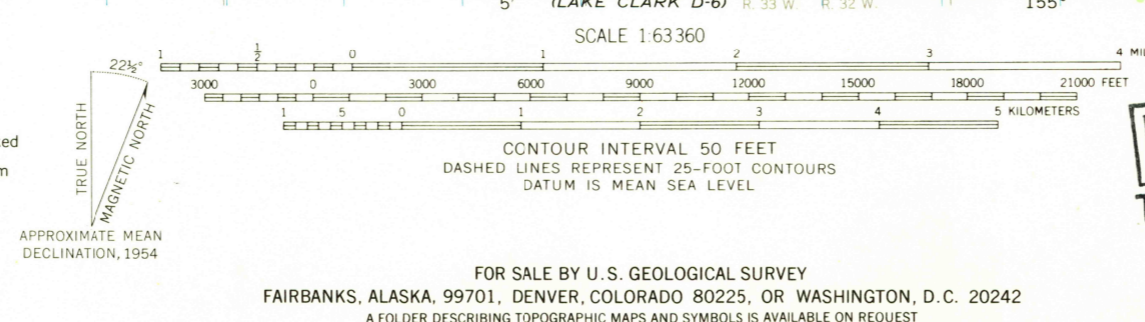


UNITED STATES  
DEPARTMENT OF THE INTERIOR  
GEOLOGICAL SURVEY

LIME HILLS (A-6) QUADRANGLE  
ALASKA  
1:63 360 SERIES (TOPOGRAPHIC)



Map by the Army Map Service  
Edited and published by the Geological Survey  
Control by US&GS and USCE  
Topography by photogrammetric methods from aerial photographs  
taken 1953-55 and 1957, field annotated 1954. Map not field checked  
Universal Transverse Mercator projection. 1927 North American datum  
10,000-foot grid based on Alaska coordinate system, zone 5  
1000-meter Universal Transverse Mercator grid ticks,  
zone 5, shown in blue  
Land lines represent unsurveyed and unmarked locations  
predetermined by the Bureau of Land Management  
Folios S-11, and S-12, Seward Meridian



U.S.G.S.  
FILE COPY  
TOPOGRAPHIC DIVISION  
QUADRANGLE LOCATION

LIME HILLS (A-6), ALASKA  
N6100-W15452.5/15X22.5  
1954

USGS  
Historical File  
Topographic Division

ROAD CLASSIFICATION  
No roads or trails in this area

FOR SALE BY U.S. GEOLOGICAL SURVEY  
FAIRBANKS, ALASKA, 99701. DENVER, COLORADO 80225, OR WASHINGTON, D.C. 20242  
A FOLDER DESCRIBING TOPOGRAPHIC MAPS AND SYMBOLS IS AVAILABLE ON REQUEST

MAR 6 1969

2780