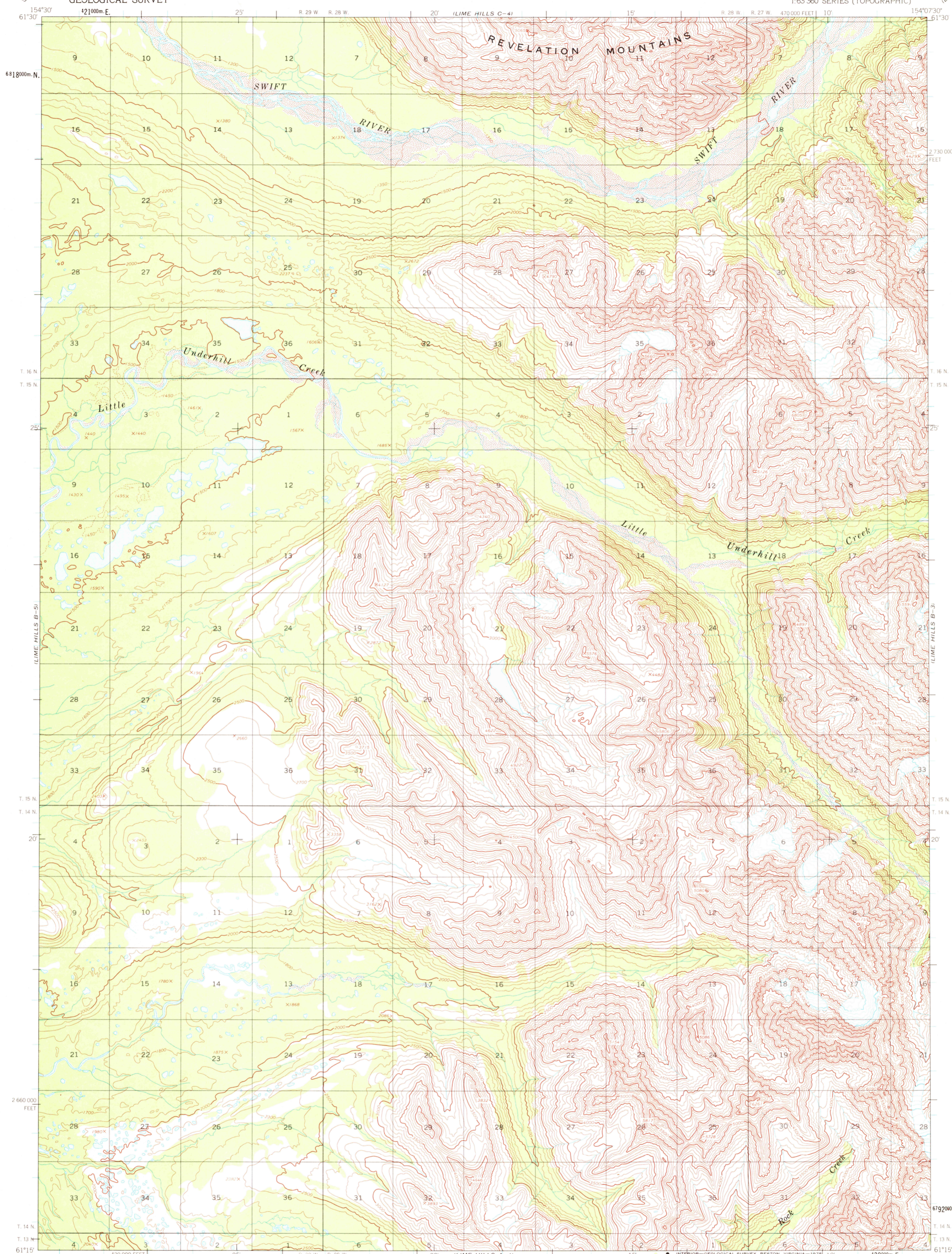
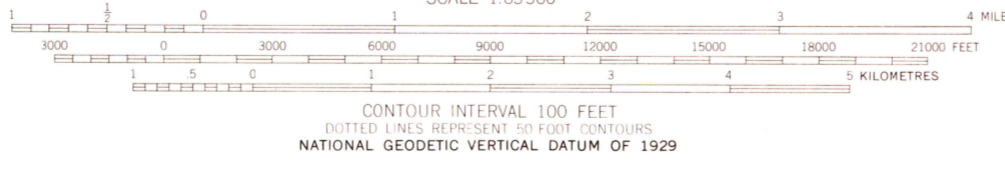
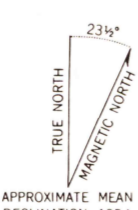


UNITED STATES
DEPARTMENT OF THE INTERIOR
GEOLOGICAL SURVEY

LIME HILLS (B-4) QUADRANGLE
ALASKA
1:63 360 SERIES (TOPOGRAPHIC)



Mapped by the Army Map Service
Edited and published by the Geological Survey
Control by US&GS and USCE
Topography by photogrammetric methods from aerial photographs
taken 1957, field annotated 1953-54. Map not field checked
Universal Transverse Mercator projection, 1927 North American datum
10,000 foot grid based on Alaska coordinate system, zone 5
1000 metre Universal Transverse Mercator grid ticks,
zone 5, shown in blue
Land lines represent unsurveyed and unmarked locations
predetermined by the Bureau of Land Management
Folio S 12, Seward Meridian



ROAD CLASSIFICATION
No roads or trails in this area

FOR SALE BY U.S. GEOLOGICAL SURVEY
FAIRBANKS, ALASKA 99701, DENVER, COLORADO 80225, OR RESTON, VIRGINIA 22092
A FOLDER DESCRIBING TOPOGRAPHIC MAPS AND SYMBOLS IS AVAILABLE ON REQUEST

LIME HILLS (B-4), ALASKA
N6115-W15407 5/15X22.5
1954

USGS
HISTORICAL FILE
TOPOGRAPHIC DIVISION

2675
JUL 8 1 1976