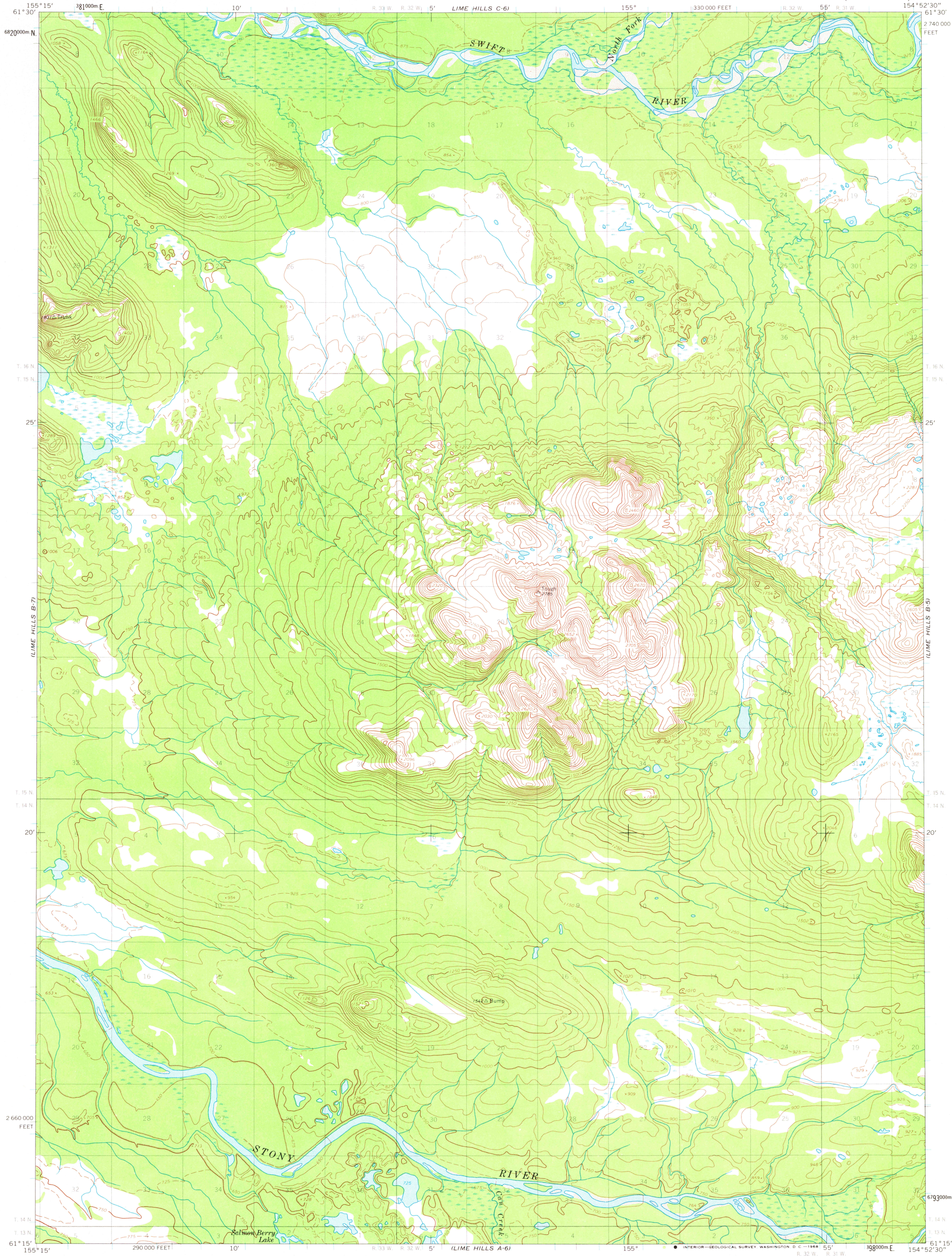


LIME HILLS C-7

UNITED STATES
DEPARTMENT OF THE INTERIOR
GEOLOGICAL SURVEY

LIME HILLS (B-6) QUADRANGLE
ALASKA
1:63 360 SERIES (TOPOGRAPHIC)

LIME HILLS C-9

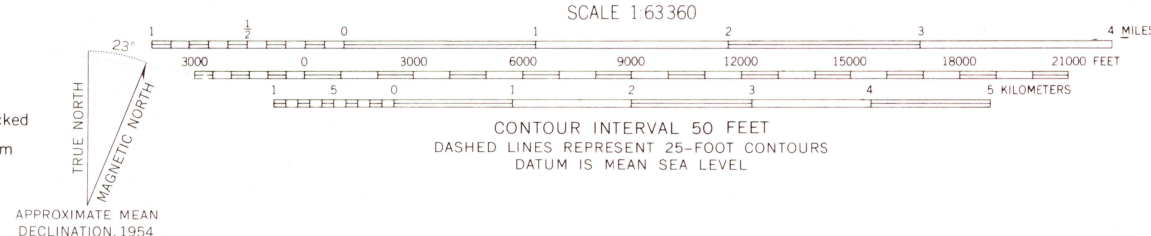


LIME HILLS A-7

Mapped by the Army Map Service
Edited and published by the Geological Survey
Control by USC&GS and USCE

Topography by photogrammetric methods from aerial photographs
taken 1953, 1954 and 1957, field annotated 1954. Map not field checked
Universal Transverse Mercator projection. 1927 North American datum
10,000-foot grid based on Alaska coordinate system, zone 5
1000-meter Universal Transverse Mercator grid ticks,
zone 5, shown in blue

Land lines represent unsurveyed and unmarked locations
predetermined by the Bureau of Land Management
Folios S-11, and S-12, Seward Meridian



FOR SALE BY U.S. GEOLOGICAL SURVEY
FAIRBANKS, ALASKA, 99701, DENVER, COLORADO 80225, OR WASHINGTON, D.C. 20242
A FOLDER DESCRIBING TOPOGRAPHIC MAPS AND SYMBOLS IS AVAILABLE ON REQUEST



LIME HILLS (B-6), ALASKA
N6115—W15452.5/15X22.5
1954

ROAD CLASSIFICATION
No roads or trails in this area

RETURN TO:
USGS NMD HISTORICAL MAP ARCHIVES

LIME HILLS B-6

ISBN # 0607024887 AK 063

TF

