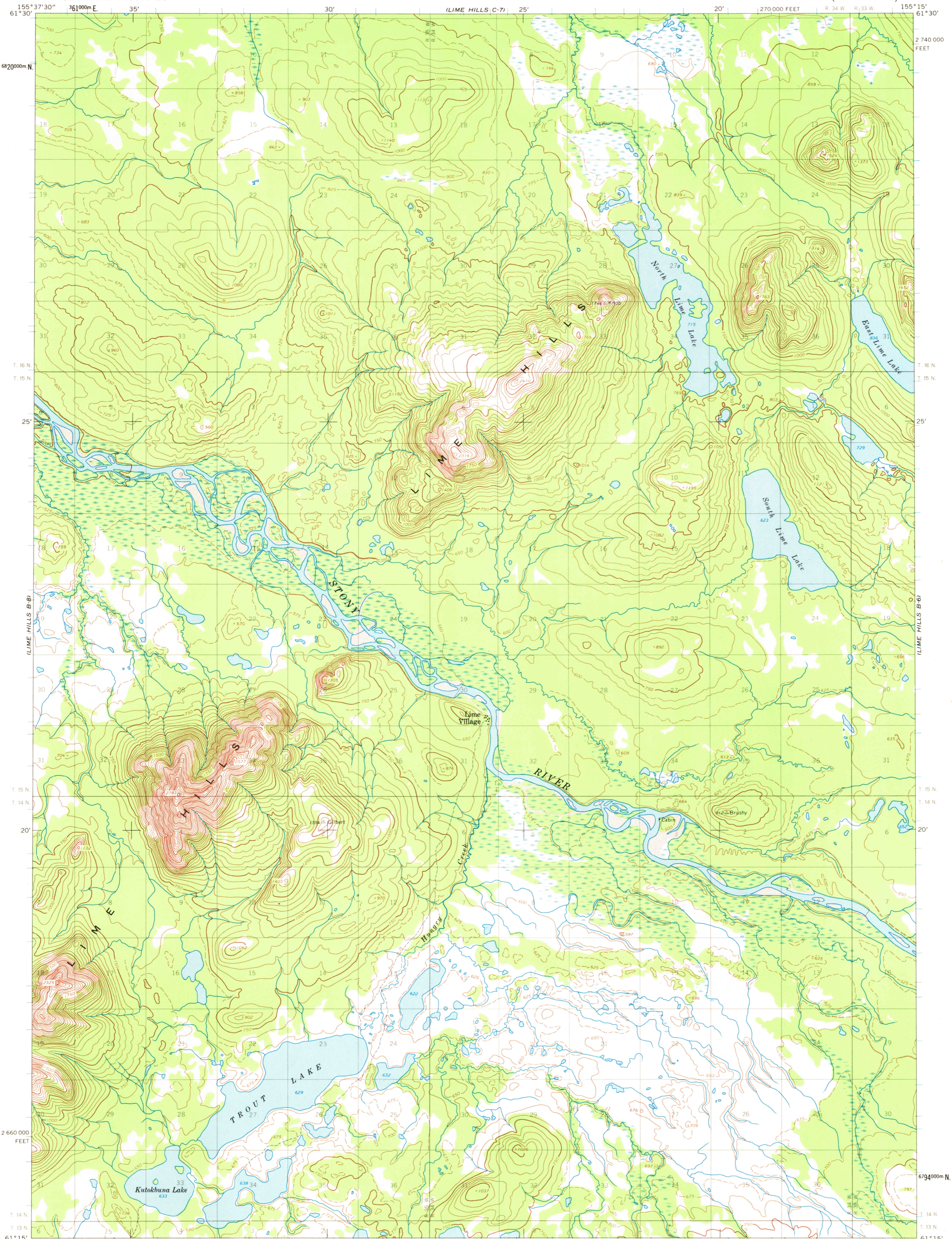
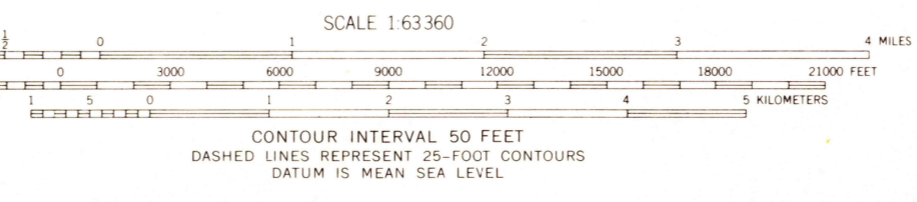


UNITED STATES
DEPARTMENT OF THE INTERIOR
GEOLOGICAL SURVEY

LIME HILLS (B-7) QUADRANGLE
ALASKA
1:63 360 SERIES (TOPOGRAPHIC)



Mapped by the Army Map Service
Edited and published by the Geological
Control by USC&GS and USCE
Topography by photogrammetric methods from aerial photographs
taken 1953 and 1957, field annotated 1954. Map not field checked
Universal Transverse Mercator projection. 1927 North American datum
10,000-foot grid based on Alaska coordinate system, zone 5
1000-meter Universal Transverse Mercator grid ticks,
zone 5, shown in blue
Land lines represent unsurveyed and unmarked locations
predetermined by the Bureau of Land Management
Folio S-11, Seward Meridian



ROAD CLASSIFICATION
Trails

FOR SALE BY U.S. GEOLOGICAL SURVEY
FAIRBANKS, ALASKA, 99701, DENVER, COLORADO 80225, OR WASHINGTON, D.C. 20242
A FOLDER DESCRIBING TOPOGRAPHIC MAPS AND SYMBOLS IS AVAILABLE ON REQUEST

RETURN TO:
USGS NWD HISTORICAL MAP ARCHIVES

LIME HILLS (B-7), ALASKA
N6115—W15515/15X22.5
1954

LIME HILLS B-7
ISBN # 0607024895 AK 063
TF
9780607024890