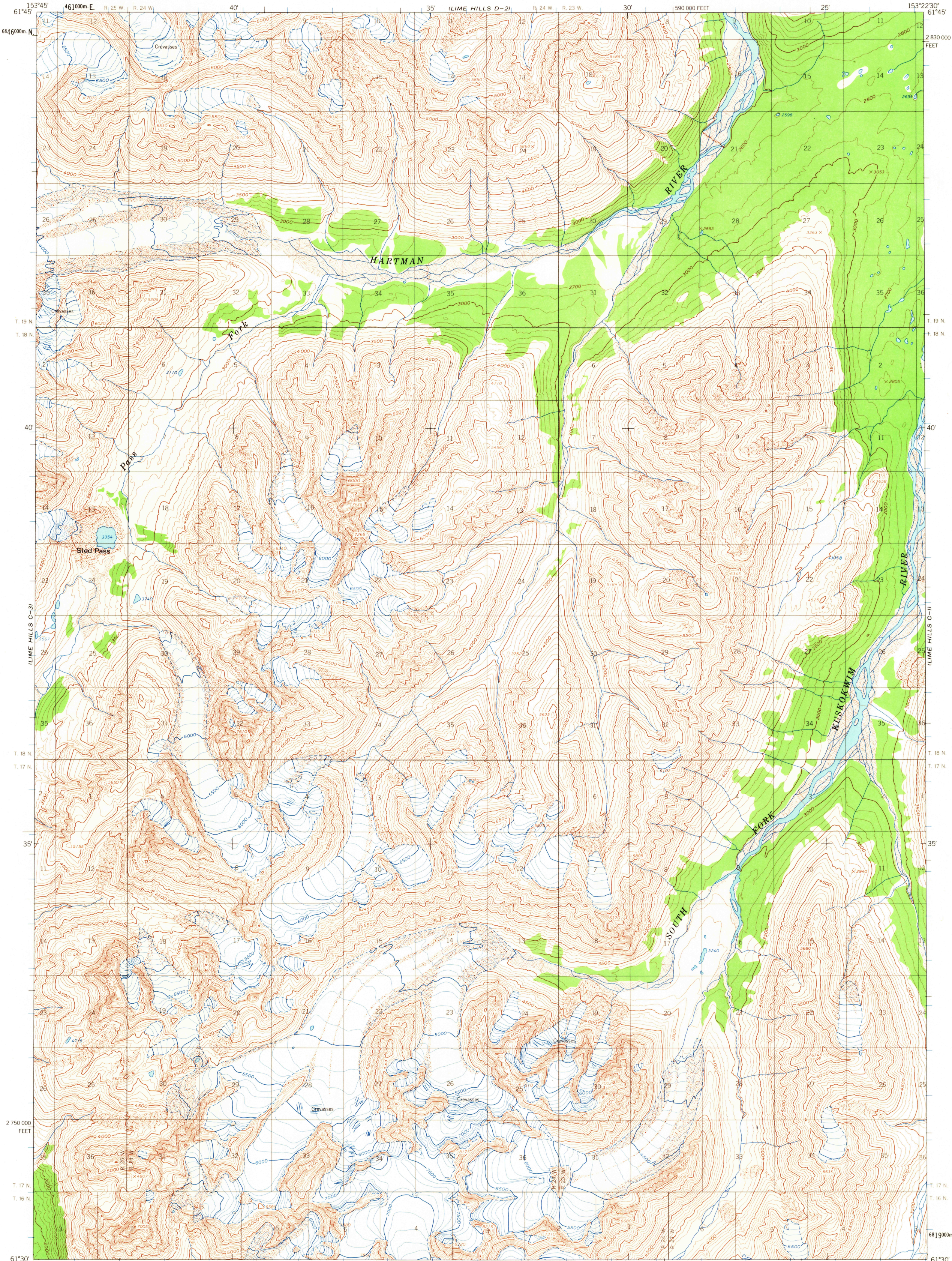


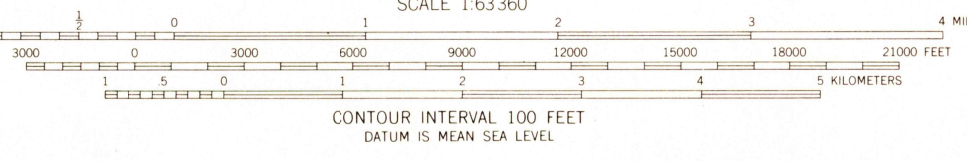
UNITED STATES
DEPARTMENT OF THE INTERIOR
GEOLOGICAL SURVEY

LIME HILLS (C-2) QUADRANGLE
ALASKA
1:63 360 SERIES (TOPOGRAPHIC)



Mapped, edited, and published by the Geological Survey
Control by USGS
Topography by photogrammetric methods from aerial photographs
taken 1954 and 1957, field annotated 1958. Map not field checked
Universal Transverse Mercator projection, 1927 North American datum
10,000 foot grid based on Alaska coordinate system, zone 5
1000-meter Universal Transverse Mercator grid ticks,
zone 5, shown in blue
Land lines represent unsurveyed and unmarked locations
predetermined by the Bureau of Land Management
Folios S. 3 and S.12, Seward Meridian

TRUE NORTH
MAGNETIC NORTH
APPROXIMATE MEAN
DECLINATION, 1958



ROAD CLASSIFICATION
No roads or trails in this area

FOR SALE BY U. S. GEOLOGICAL SURVEY
FAIRBANKS, ALASKA 99701, DENVER, COLORADO 80225, OR WASHINGTON, D. C. 20242
A FOLDER DESCRIBING TOPOGRAPHIC MAPS AND SYMBOLS IS AVAILABLE ON REQUEST

LIME HILLS (C-2), ALASKA
N6130-W15322.5/15X22.5
1958

U.S.G.S.
FILE COPY
TOPOGRAPHIC DIVISION

DEC 17 1965

1925

USGS
Historical File
Topographic Division