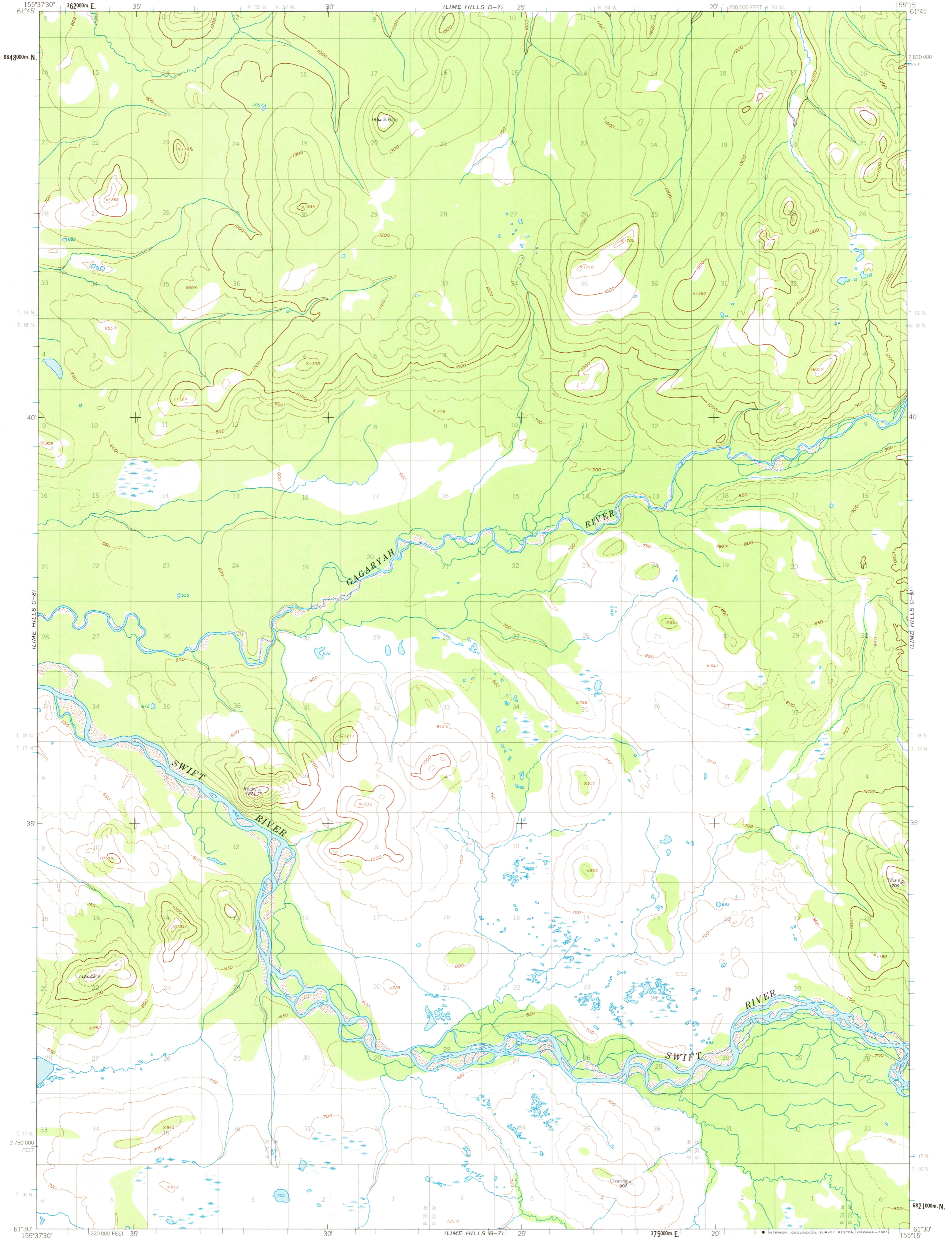


LIME HILLS D-8

UNITED STATES
DEPARTMENT OF THE INTERIOR
GEOLOGICAL SURVEY

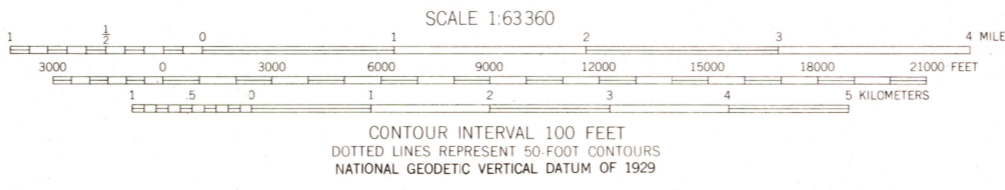
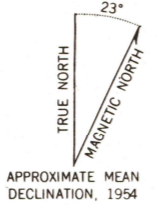
LIME HILLS (C-7) QUADRANGLE
ALASKA
1:63 360 SERIES (TOPOGRAPHIC)

LIME HILLS D-6



LIME HILLS B-8

Mapped, edited, and published by the Geological Survey
Control by USC&GS and USCE
Topography by photogrammetric methods from aerial photographs
taken 1953; field annotated 1954. Map not field checked
Universal Transverse Mercator projection, 1927 North American datum
10,000-foot grid based on Alaska coordinate system, zone 5
1000-meter Universal Transverse Mercator grid ticks,
zone 5, shown in blue
Gray land lines represent unsurveyed and unmarked locations
pre-determined by the Bureau of Land Management
Folios S-4 and S-11, Seward Meridian
Swamps, as portrayed, indicate only the wetter areas,
usually of low relief, as interpreted from aerial photographs
Lake elevations are un-checked
To place on the predicted North American Datum 1983 move
the projection lines 75 meters north and 126 meters east



SCALE 1:63 360
CONTOUR INTERVAL 100 FEET
DOTTED LINES REPRESENT 50 FOOT CONTOURS
NATIONAL GEODETIC VERTICAL DATUM OF 1929



ROAD CLASSIFICATION
No roads or trails in this area

FOR SALE BY U.S. GEOLOGICAL SURVEY
FAIRBANKS, ALASKA 99701, DENVER, COLORADO 80225, OR RESTON, VIRGINIA 22092
A FOLDER DESCRIBING TOPOGRAPHIC MAPS AND SYMBOLS IS AVAILABLE ON REQUEST

LIME HILLS (C-7), ALASKA
N6130-W15515/15X22.5
1954

USGS
HISTORICAL FILE
NATIONAL MAPPING DIVISION

JUN 29 1981

700