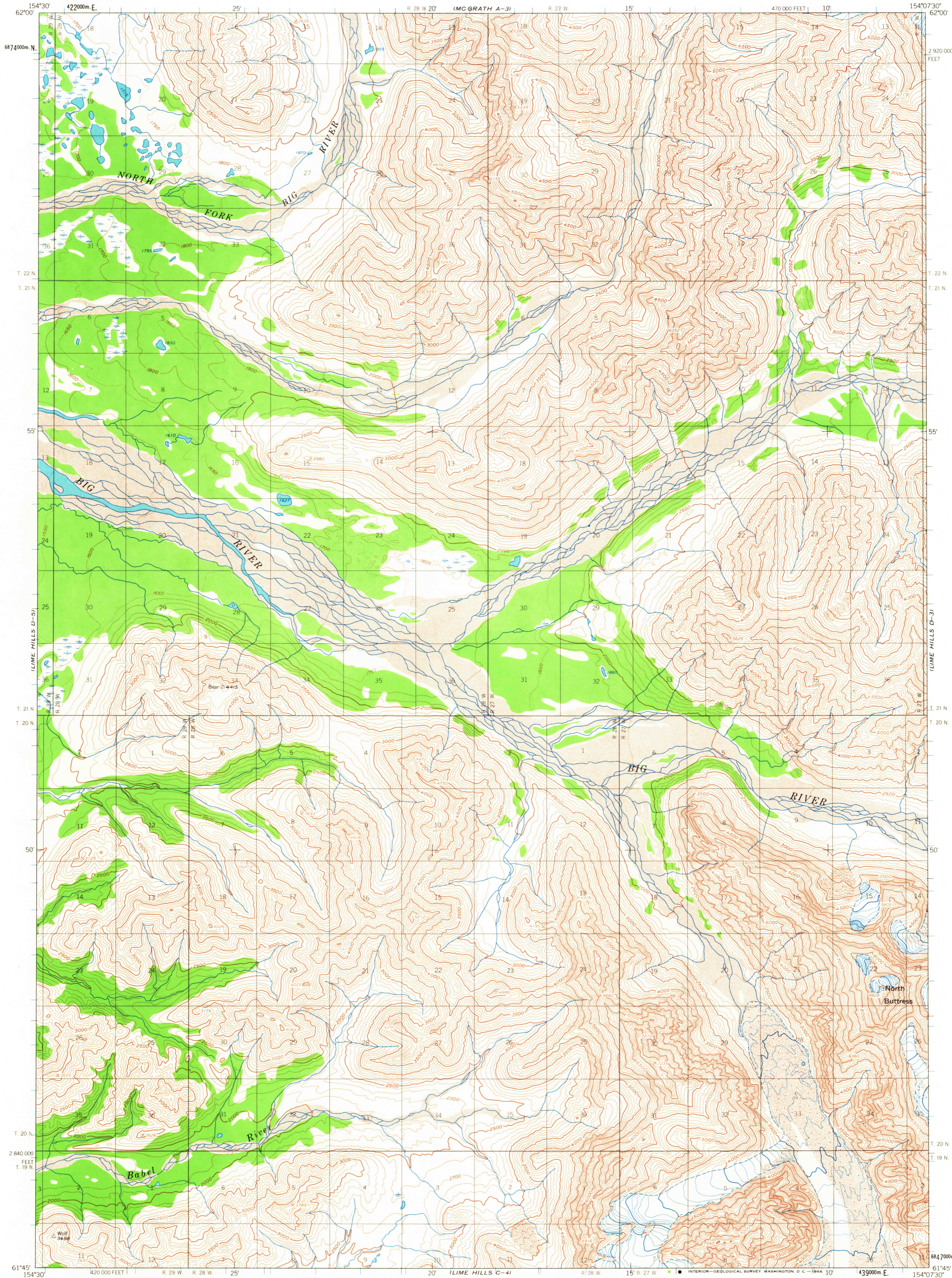


UNITED STATES  
DEPARTMENT OF THE INTERIOR  
GEOLOGICAL SURVEY

LIME HILLS (D-4) QUADRANGLE  
ALASKA  
1:63 360 SERIES (TOPOGRAPHIC)



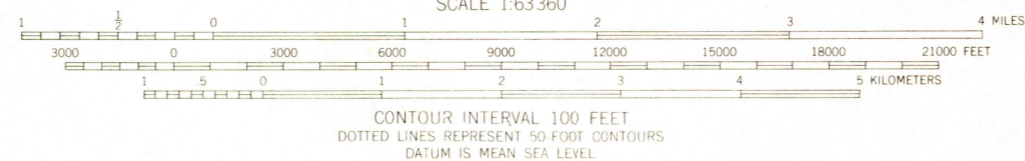
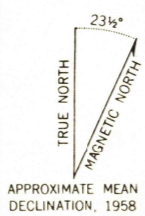
Mapped, edited, and published by the Geological Survey  
Control by USGS, USC&GS, and USCE

Topography by photogrammetric methods from aerial photographs  
taken 1954 and 1957, field annotated 1958. Map not field checked

Universal Transverse Mercator projection, 1927 North American datum  
10,000 foot grid based on Alaska coordinate system, zone 5  
1000 meter Universal Transverse Mercator grid ticks,  
zone 5, shown in blue

Land lines represent unsurveyed and unmarked locations  
predetermined by the Bureau of Land Management  
Folio S-3, Seward Meridian

Swamps, as portrayed, indicate only the wetter areas,  
usually of low relief, as interpreted from aerial photographs



ROAD CLASSIFICATION  
No roads or trails in this area

FOR SALE BY U.S. GEOLOGICAL SURVEY  
FAIRBANKS, ALASKA 99701, DENVER, COLORADO 80225, OR WASHINGTON, D. C. 20242  
A FOLDER DESCRIBING TOPOGRAPHIC MAPS AND SYMBOLS IS AVAILABLE ON REQUEST

LIME HILLS (D-4), ALASKA  
N6145-W15407 5/15X22.5

1958

U.S.G.S.  
FINE COPY  
TOPOGRAPHIC DIVISION  
Historical File  
Topographic Division

2095  
APR 22 1966