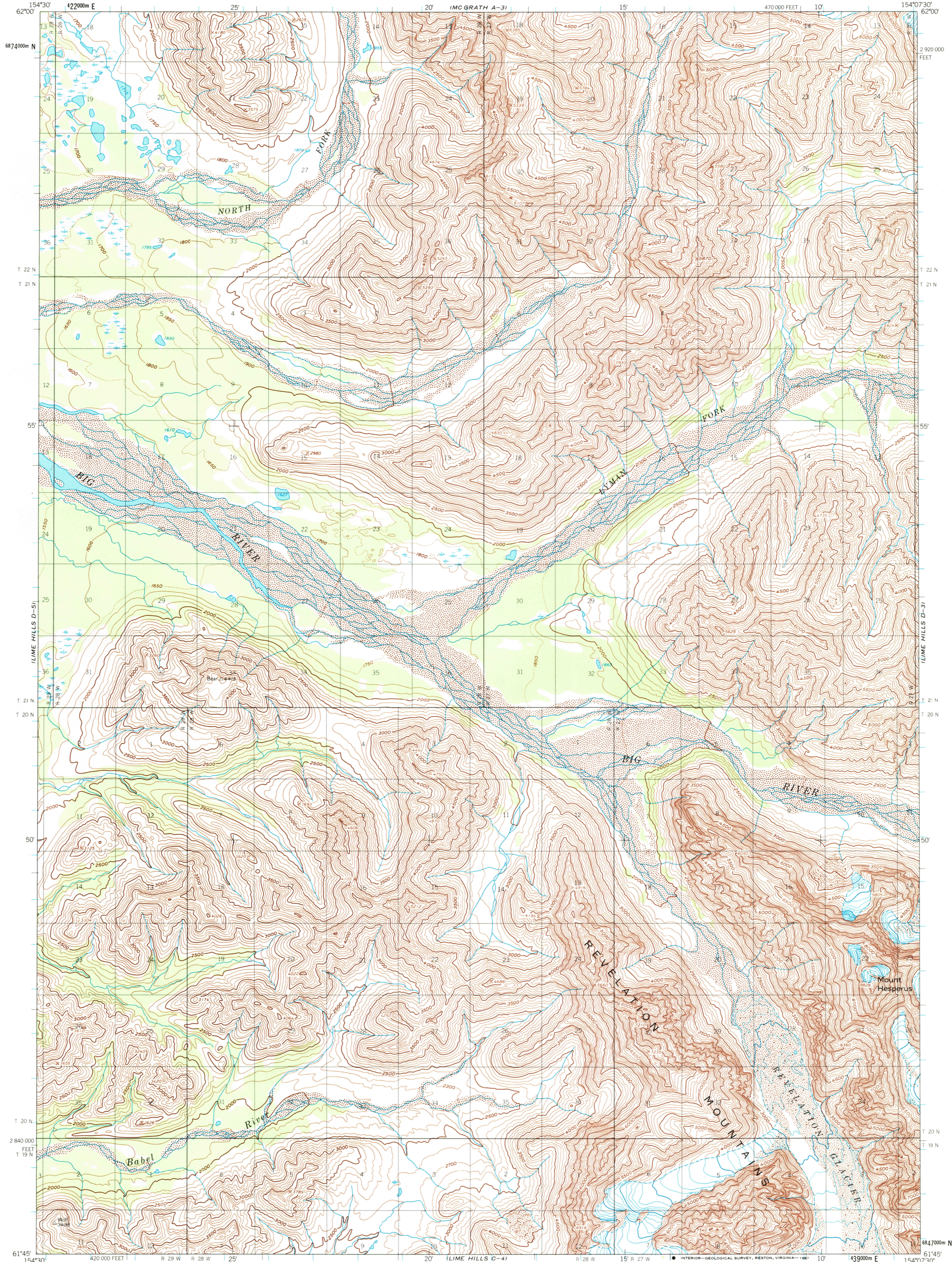


IMGRATH A-1

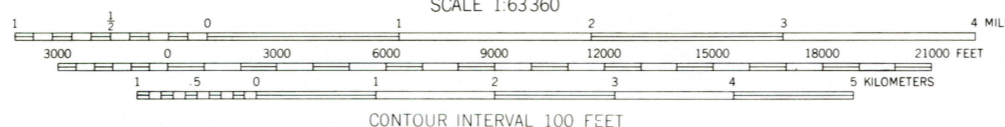
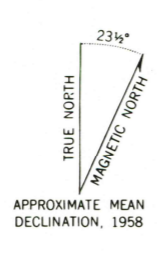
UNITED STATES  
DEPARTMENT OF THE INTERIOR  
GEOLOGICAL SURVEY

LIME HILLS (D-4) QUADRANGLE  
ALASKA  
1:63 360 SERIES (TOPOGRAPHIC)

IMGRATH A-31



Mapped, edited, and published by the Geological Survey  
Control by USGS, NOS/NOAA, and USCE  
Topography by photogrammetric methods from aerial photographs  
taken 1954 and 1957, field annotated 1958. Map not field checked  
Projection and 1000-meter grid ticks shown in blue:  
Universal Transverse Mercator, zone 5  
10,000-foot grid ticks based on Alaska coordinate  
system, zone 5, 1927 North American Datum  
To place on the predicted North American Datum 1983 move  
the projection lines 72 meters north and 125 meters east  
Land lines represent unsurveyed and unmarked locations  
predetermined by the Bureau of Land Management  
Folios S-3, Seward Meridian  
Swamps, as portrayed, indicate only the wetter areas,  
usually of low relief, as interpreted from aerial photographs



CONTOUR INTERVAL 100 FEET  
DOTTED LINES REPRESENT 50 FOOT CONTOURS  
NATIONAL GEODETIC VERTICAL DATUM OF 1929



ROAD CLASSIFICATION  
No roads or trails in this area

FOR SALE BY U. S. GEOLOGICAL SURVEY  
FAIRBANKS, ALASKA 99701, DENVER, COLORADO 80225, OR RESTON, VIRGINIA 22092  
A FOLDER DESCRIBING TOPOGRAPHIC MAPS AND SYMBOLS IS AVAILABLE ON REQUEST

LIME HILLS (D-4), ALASKA  
61154-62-TF-063  
1958  
MINOR REVISIONS 1975

RETURN TO:  
USGS AND HISTORICAL MAP ARCHIVES

LIME HILLS D-4  
ISBN # 0607025026 AK 063  
TF

