

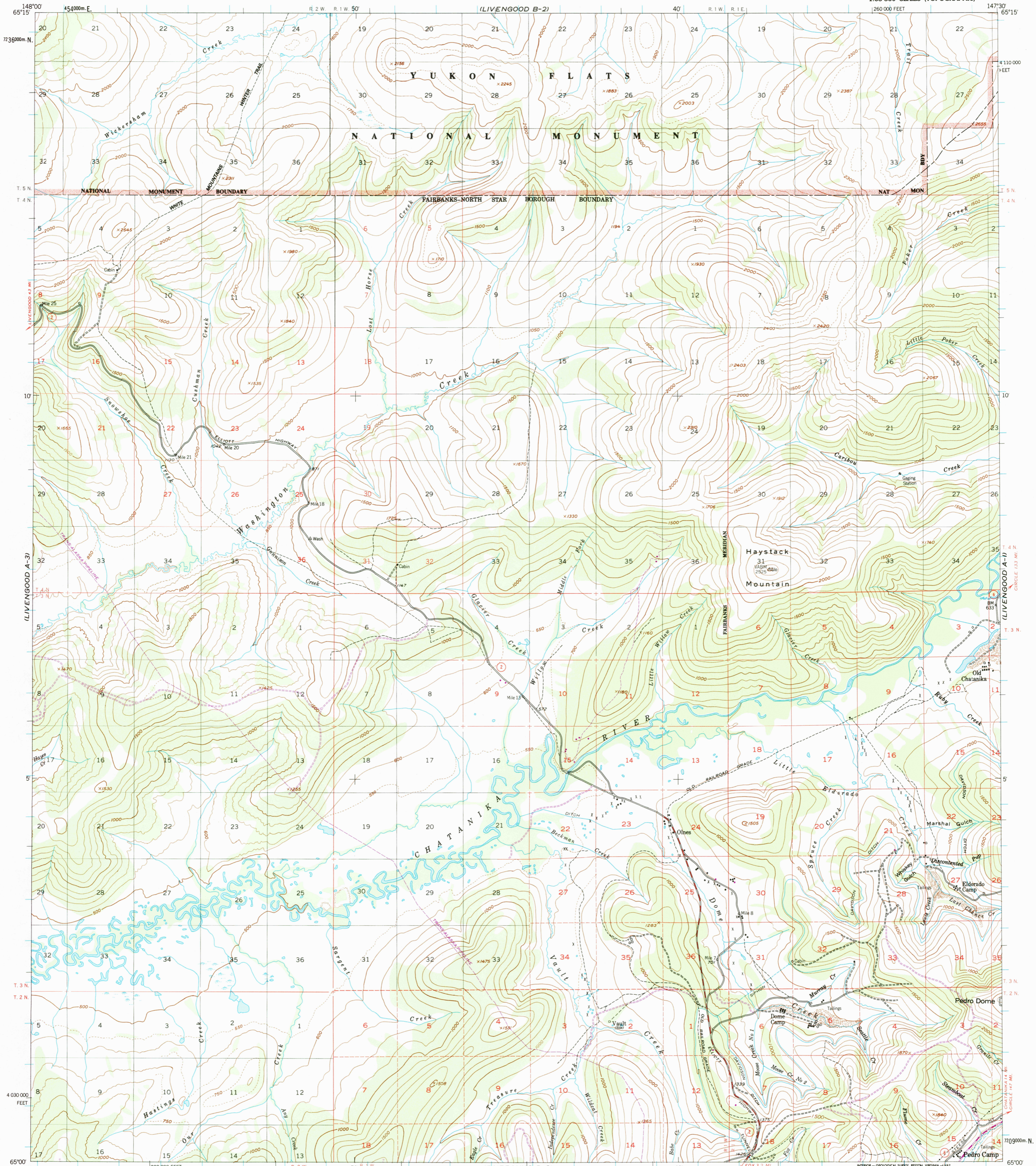
LIVENGOOD B-3



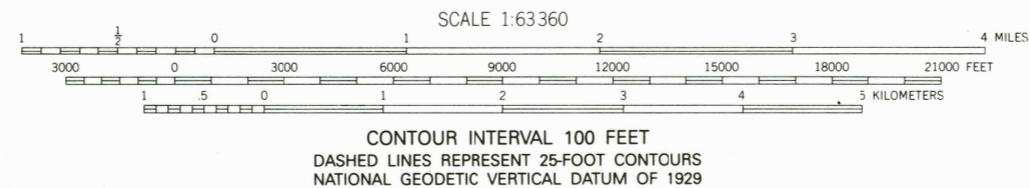
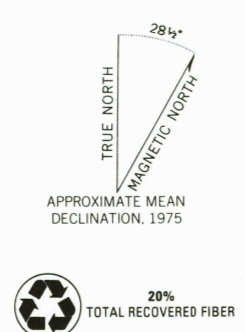
U.S. DEPARTMENT OF THE INTERIOR
U.S. GEOLOGICAL SURVEY

LIVENGOOD (A-2) QUADRANGLE
ALASKA
1:63 360 SERIES (TOPOGRAPHIC)

LIVENGOOD B-1



Produced by the United States Geological Survey
 Control by USGS and NOS/NOAA
 Compiled from aerial photographs taken 1951,
 field annotated 1952. Map not field checked
 North American Datum of 1927 (NAD 27). Projection and
 10,000-foot grid ticks: Alaska coordinate system, zone 3 (transverse Mercator)
 1000-meter Universal Transverse Mercator grid ticks, zone 6,
 shown in blue
 The difference between 1927 North American Datum and North
 American Datum of 1983 (NAD 83) for 7.5 minute intersections
 is given in USGS Bulletin 1875
 Gray land lines represent unsurveyed and unmarked locations
 predetermined by the Bureau of Land Management
 Folios F-6 and F-7, Fairbanks Meridian
 Swamps, as portrayed, indicate only wetter areas,
 usually of low relief, as interpreted from aerial photographs
 Federal reservation boundaries established by the Alaska National
 Interest Lands Conservation Act, PL96-487, Dec. 2, 1980, are
 shown as compiled by the administering agencies
 There may be private inholdings within the boundaries of
 the National or State reservations shown on this map



CONTOUR INTERVAL 100 FEET
 DASHED LINES REPRESENT 25-FOOT CONTOURS
 NATIONAL GEODETIC VERTICAL DATUM OF 1929



ROAD CLASSIFICATION
 Medium-duty ——— Light-duty ———
 Unimproved dirt - - - - - Slate Route ○

FOR SALE BY U.S. GEOLOGICAL SURVEY, P.O. BOX 25286, DENVER, COLORADO 80225
 A FOLDER DESCRIBING TOPOGRAPHIC MAPS AND SYMBOLS IS AVAILABLE ON REQUEST

LIVENGOOD (A-2), ALASKA
 65147-A5-TF-063

U.S. GEOLOGICAL SURVEY
 LIBRARY
 APR 11 2002
 RESTON, VA

1952
 PHOTOREPRODUCED 1975
 USGS LIBRARY - RESTON
 3 1818 00365163 3

