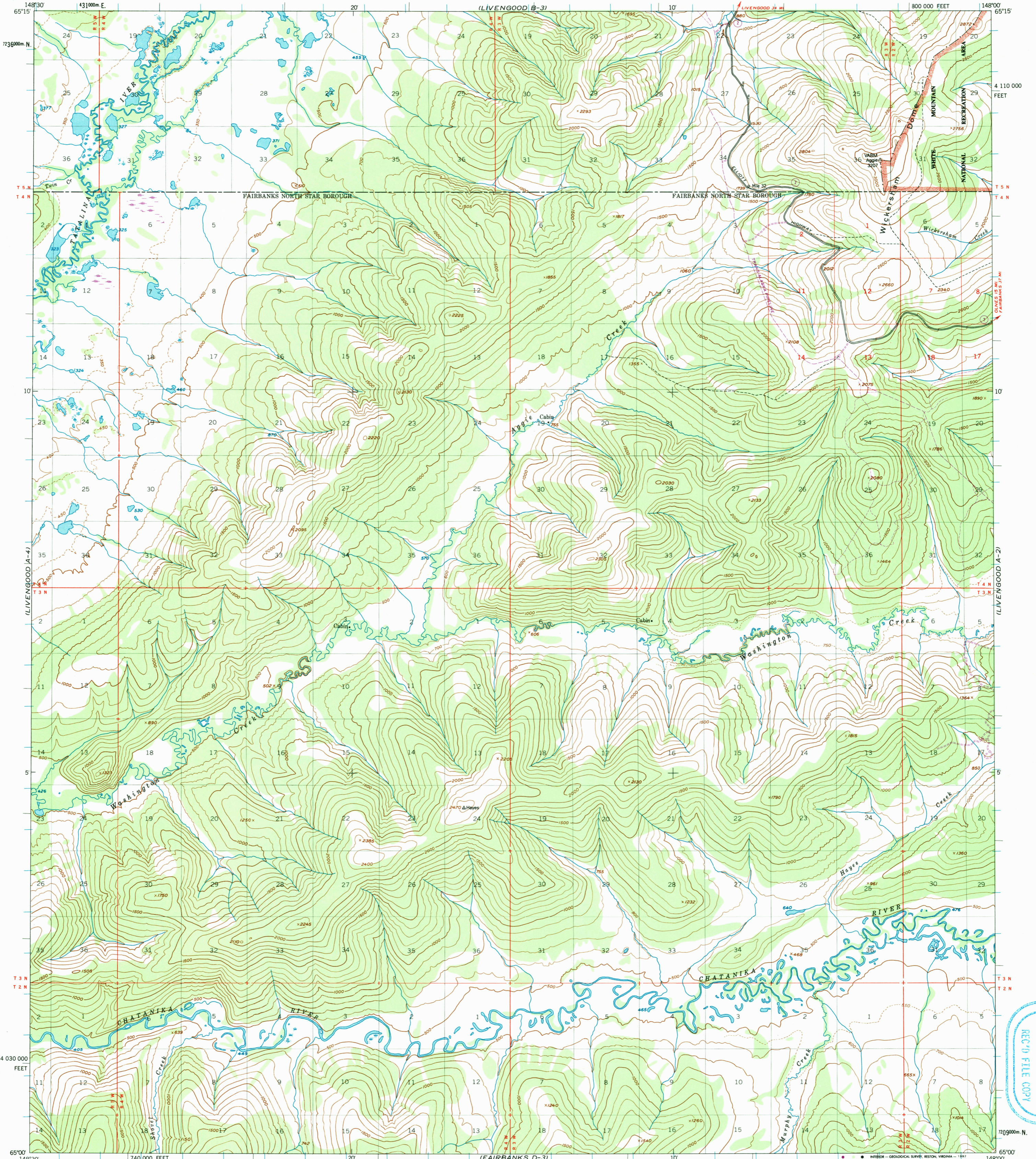


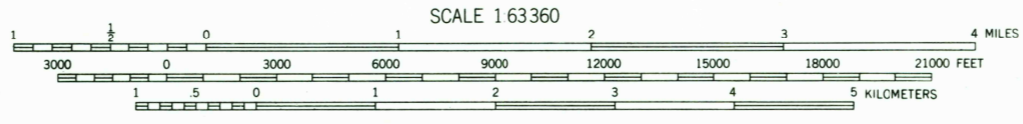
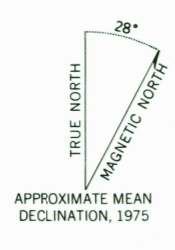
UNITED STATES
DEPARTMENT OF THE INTERIOR
GEOLOGICAL SURVEY

LIVENGOOD (A-3) QUADRANGLE
ALASKA
1:63 360 SERIES (TOPOGRAPHIC)



USGS AND HISTORICAL
MAP ARCHIVES
REC'D FILE COPY
AUG 07 1992

Mapped, edited, and published by the Geological Survey
Control by USGS and NOS/NOAA
Topography by photogrammetric methods from aerial photographs
taken 1951. Map not field checked
Projection and 10,000-foot grid ticks: Alaska
coordinate system, zone 4 (transverse Mercator)
1000-meter Universal Transverse Mercator grid ticks, zone 6,
shown in blue. 1927 North American Datum
The difference between 1927 North American Datum and North
American Datum of 1983 (NAD 83) for 7.5 minute intersections
is given in USGS Bulletin 1875
Gray land lines represent unsurveyed and unmarked locations
predetermined by the Bureau of Land Management
Folios F-6, Fairbanks Meridian
Swamps as portrayed, indicate only wetter areas,
usually of low relief, as interpreted from aerial photographs
Federal reservation boundaries established by the Alaska National
Interest Lands Conservation Act, PL96-487, Dec. 2, 1980, are
shown as compiled by the administering agencies
There may be private inholdings within the boundaries of
the National or State reservations shown on this map



ROAD CLASSIFICATION
Light-duty ————— Unimproved dirt - - - - -
State Route ○

FOR SALE BY U.S. GEOLOGICAL SURVEY
FAIRBANKS, ALASKA 99701, DENVER, COLORADO 80225, OR RESTON, VIRGINIA 22092
A FOLDER DESCRIBING TOPOGRAPHIC MAPS AND SYMBOLS IS AVAILABLE ON REQUEST

Revisions shown in purple and recompilation of woodland areas
compiled from aerial photographs taken 1975
This information not field checked

LIVENGOOD (A-3), ALASKA
65148-A1-TF-063
1953
PHOTOREVISED 1975