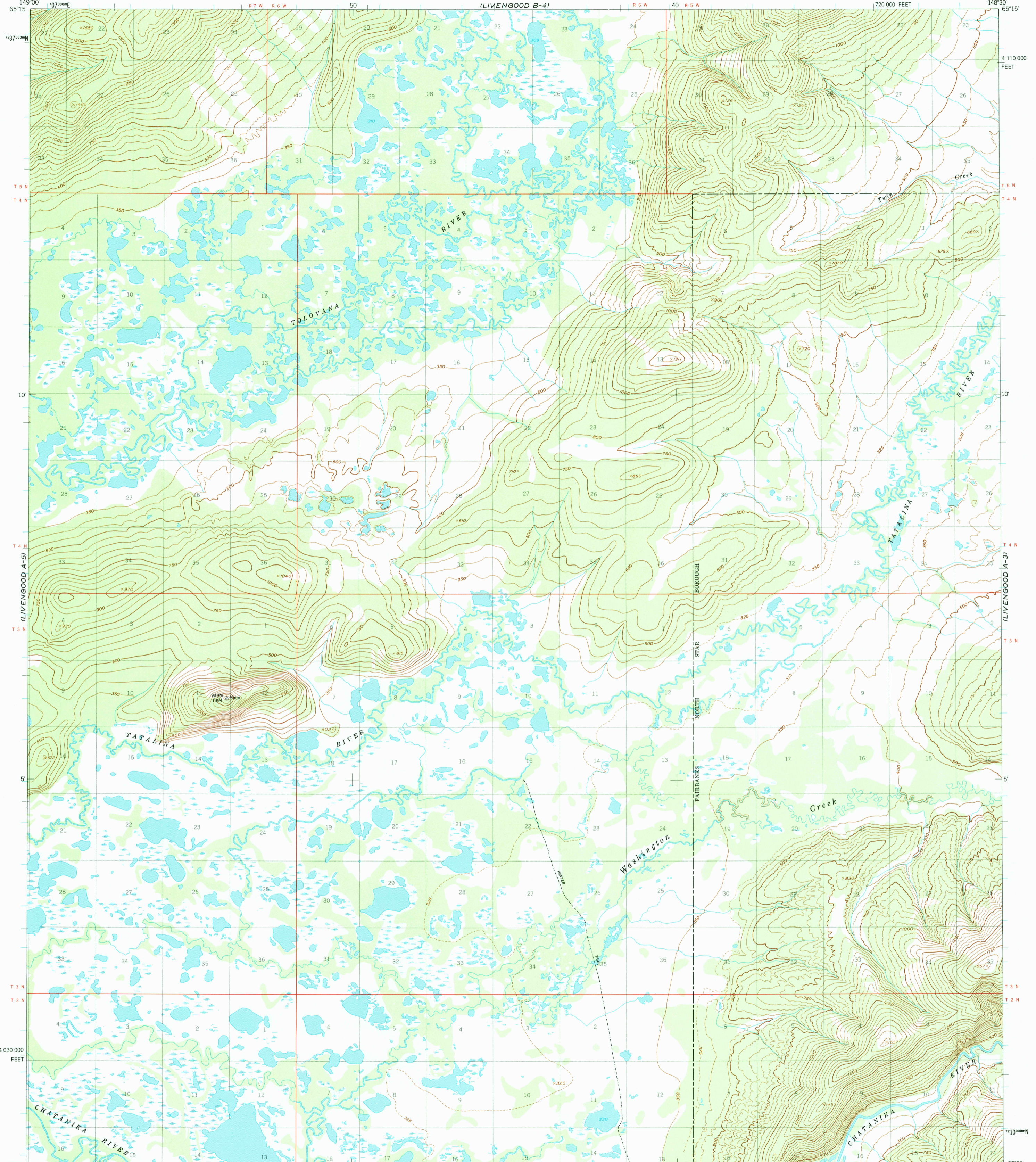


LIVENGOOD B-5

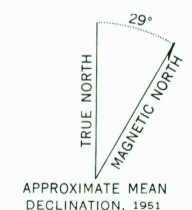
LIVENGOOD B-3

FAIRBANKS D-5

FAIRBANKS D-3



Mapped, edited, and published by the Geological Survey
Control by USGS and USC&GS
Topography by photogrammetric methods from aerial photographs
taken 1951. Map not field checked
Projection and 1000-meter grid
Universal Transverse Mercator, zone 6
10,000-foot grid ticks based on Alaska coordinate
system, zone 4, 1927 North American datum
To place on the predicted North American datum 1983 move
the projection lines 51 meters north and 117 meters east
Land lines represent unsurveyed and unmarked locations
predetermined by the Bureau of Land Management
Folio F-6 Fairbanks Meridian
Swamps, as portrayed, indicate only the wetter areas
usually of low relief, as interpreted from aerial photographs
To place on the predicted North American datum 1983 move
the projection lines 57 meters north and 117 meters east



SCALE 1:63 360
CONTOUR INTERVAL 50 FEET
DASHED LINES REPRESENT 25-FOOT CONTOURS
NATIONAL GEODETIC VERTICAL DATUM OF 1929



FOR SALE BY U. S. GEOLOGICAL SURVEY
FAIRBANKS, ALASKA 99701, DENVER, COLORADO 80225, OR RESTON, VIRGINIA 22092
A FOLDER DESCRIBING TOPOGRAPHIC MAPS AND SYMBOLS IS AVAILABLE ON REQUEST

ROAD CLASSIFICATION
Trails

LIVENGOOD (A-4), ALASKA
N6500-W14830/15X30
1951
LIMITED REVISIONS 1981

RETURN TO:
USGS NWD HISTORICAL MAP ARCHIVES

LIVENGOOD A-4
ISBN # 0607025123 AK 063
TF
9780607025125