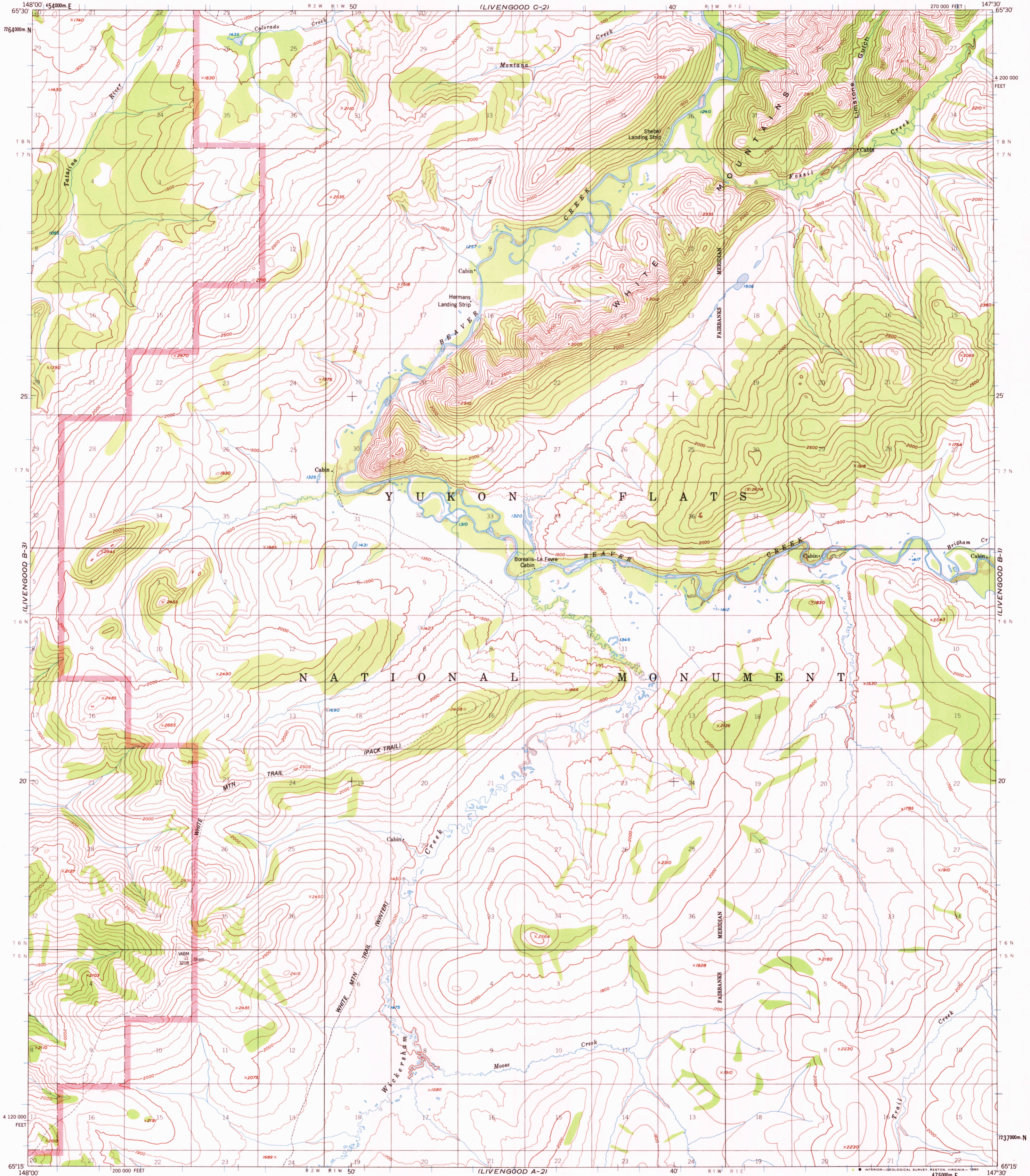
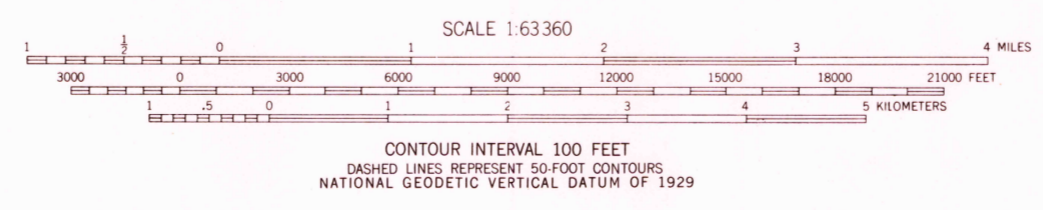
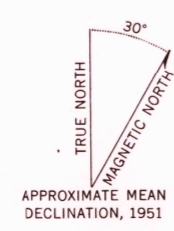


UNITED STATES  
DEPARTMENT OF THE INTERIOR  
GEOLOGICAL SURVEY

LIVENGOOD (B-2) QUADRANGLE  
ALASKA  
1:63 360 SERIES (TOPOGRAPHIC)



Maped, edited, and published by the Geological Survey  
Control by USGS and USC&GS  
Topography by photogrammetric methods from aerial photographs taken 1951. Map not field checked  
Universal Transverse Mercator projection, 1927 North American datum 10,000-foot grid ticks based on Alaska coordinate system, zone 3 1000-meter Universal Transverse Mercator grid ticks, zone 6, shown in blue  
Land lines represent unsurveyed and unmarked locations predetermined by the Bureau of Land Management Folios F-6 and F-7, Fairbanks Meridian  
There may be private inholdings within the boundaries of the Yukon Flats National Monument shown on this map



USCS  
Historical File  
Topographic Division

ROAD CLASSIFICATION  
Trails -----  
OCT 29 1980

FOR SALE BY U.S. GEOLOGICAL SURVEY  
FAIRBANKS, ALASKA 99701, DENVER, COLORADO 80225, OR RESTON, VIRGINIA 22092  
A FOLDER DESCRIBING TOPOGRAPHIC MAPS AND SYMBOLS IS AVAILABLE ON REQUEST

LIVENGOOD (B-2), ALASKA  
N6515-W14730/15X30  
1951  
LIMITED REVISIONS 1978

1700