

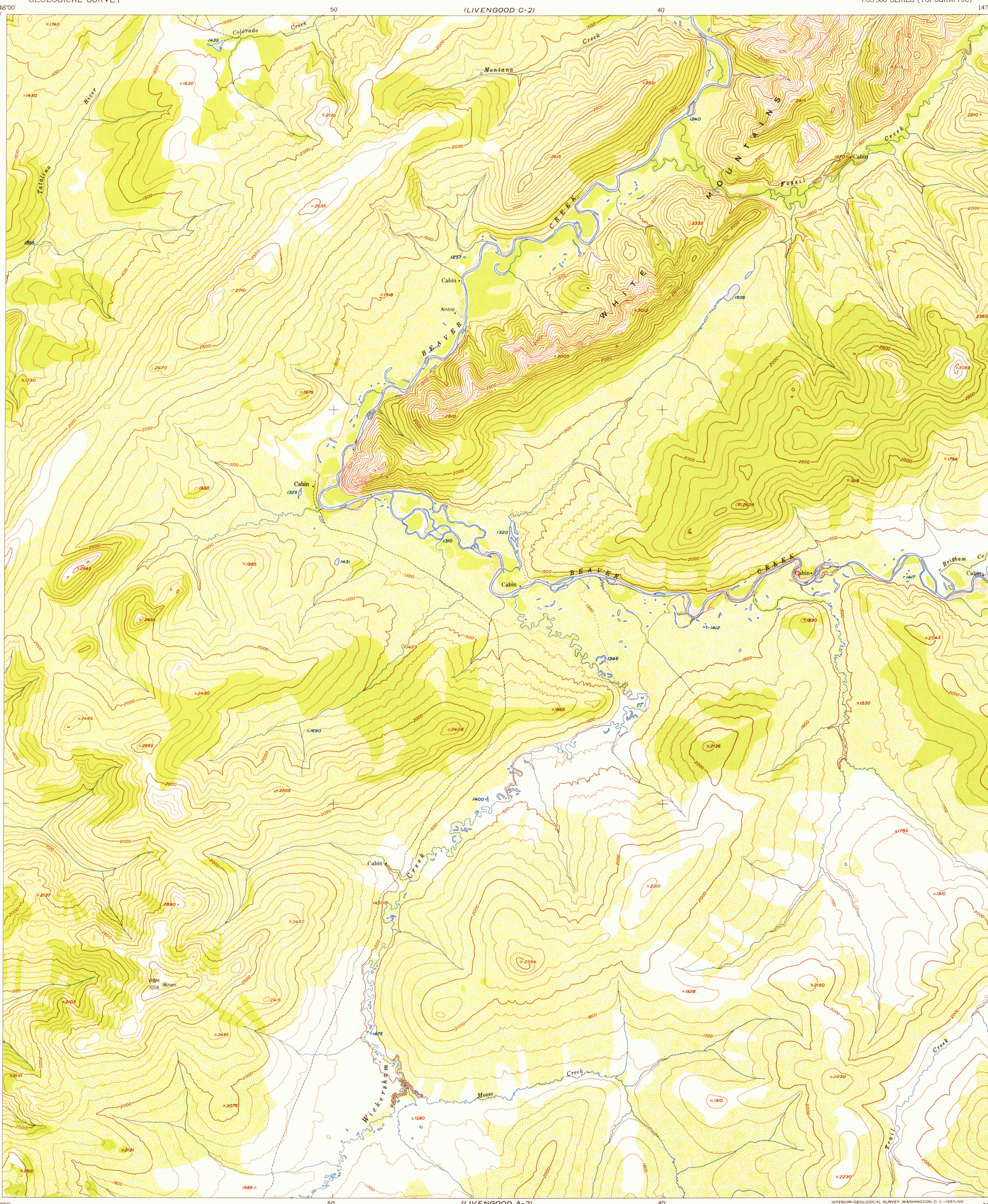
U.S.G.S.  
FILE COPY  
TOPOGRAPHIC DIVISION

U.S.G.S.  
FILE COPY  
TOPOGRAPHIC DIVISION

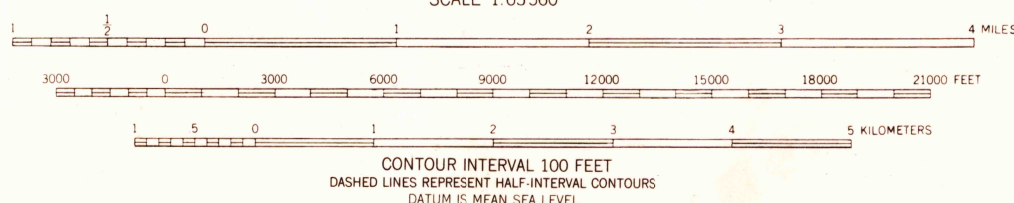
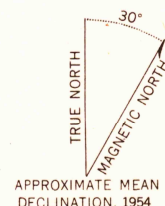
U.S.G.S.  
Historical File  
Topographic Division

LIVENGOOD (B-2), ALASKA  
N6515—W14730/15X30  
1954

MAY 4 1955



Mapped, edited, and published by the Geological Survey  
Control by USGS and USC&GS  
Topography from aerial photographs by multiplex methods 1954  
Aerial photographs taken 1951  
Universal Transverse Mercator projection, zone 6  
1927 North American datum  
Unchecked elevations are shown in brown and blue



ROAD CLASSIFICATION  
ALL WEATHER ROADS DRY WEATHER ROADS  
Hard surface None Improved dirt None  
Other None Unimproved dirt None  
Trails

FOR SALE BY U.S. GEOLOGICAL SURVEY  
FAIRBANKS, ALASKA FEDERAL CENTER, DENVER, COLORADO WASHINGTON 25, D.C.  
A FOLDER DESCRIBING TOPOGRAPHIC MAPS AND SYMBOLS IS AVAILABLE ON REQUEST