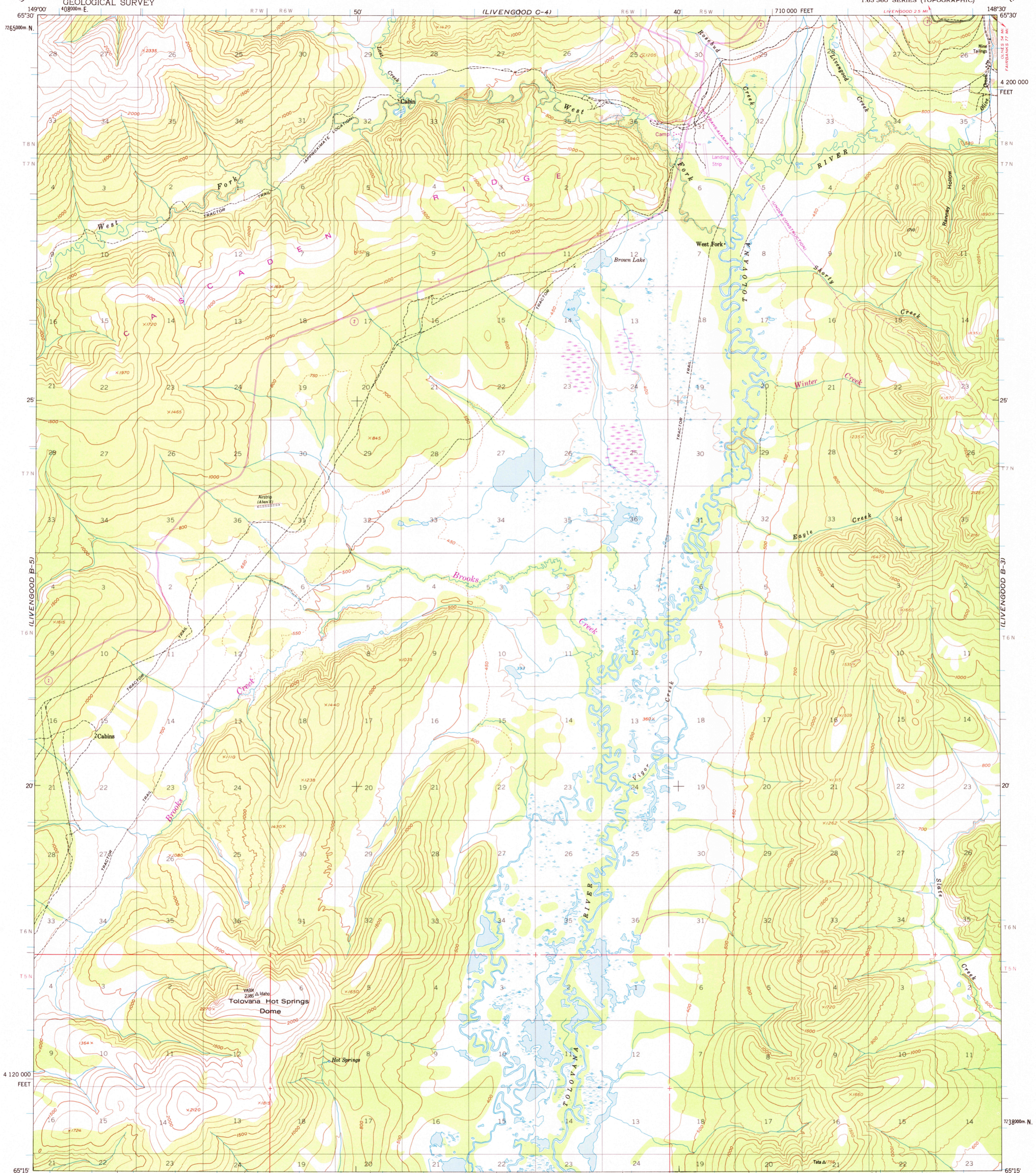


LIVENGOOD C-5)

LIVENGOOD C-3)

UNITED STATES
DEPARTMENT OF THE INTERIOR
GEOLOGICAL SURVEY

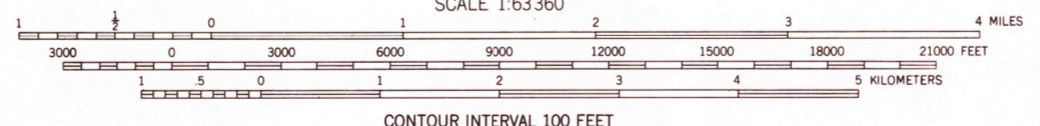
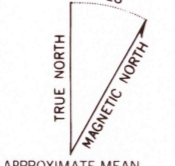
LIVENGOOD (B-4) QUADRANGLE
ALASKA
1:63 360 SERIES (TOPOGRAPHIC)



LIVENGOOD A-5)

LIVENGOOD A-3)

Mapped, edited, and published by the Geological Survey
Control by USGS and USC&GS
Topography by photogrammetric methods from aerial photographs taken 1951. Map not field checked
Projection and 1000-meter grid ticks: Universal Transverse Mercator, zone 6
10,000-foot grid ticks based on Alaska coordinate system, zone 4, 1927 North American datum
Gray land lines represent unsurveyed and unmarked locations predetermined by the Bureau of Land Management Folio F-6, Fairbanks Meridian
Swamps, as portrayed, indicate only the wetter areas, usually of low relief, as interpreted from aerial photographs
Revisions shown in purple and recompilation of woodland areas compiled from aerial photographs taken 1975. This information not field checked



CONTOUR INTERVAL 100 FEET
DASHED LINES REPRESENT HALF-INTERVAL CONTOURS
NATIONAL GEODETIC VERTICAL DATUM OF 1929



ROAD CLASSIFICATION
Light duty ———— Unimproved dirt - - - - -
State Route

FOR SALE BY U.S. GEOLOGICAL SURVEY
FAIRBANKS, ALASKA 99701, DENVER, COLORADO 80225, OR RESTON, VIRGINIA 22092
A FOLDER DESCRIBING TOPOGRAPHIC MAPS AND SYMBOLS IS AVAILABLE ON REQUEST

USGS
Historical File
Topographic Division

LIVENGOOD (B-4), ALASKA
N6515-W14830/15X30
1953
PHOTOREVISED 1975

FEB 17 1978

5820