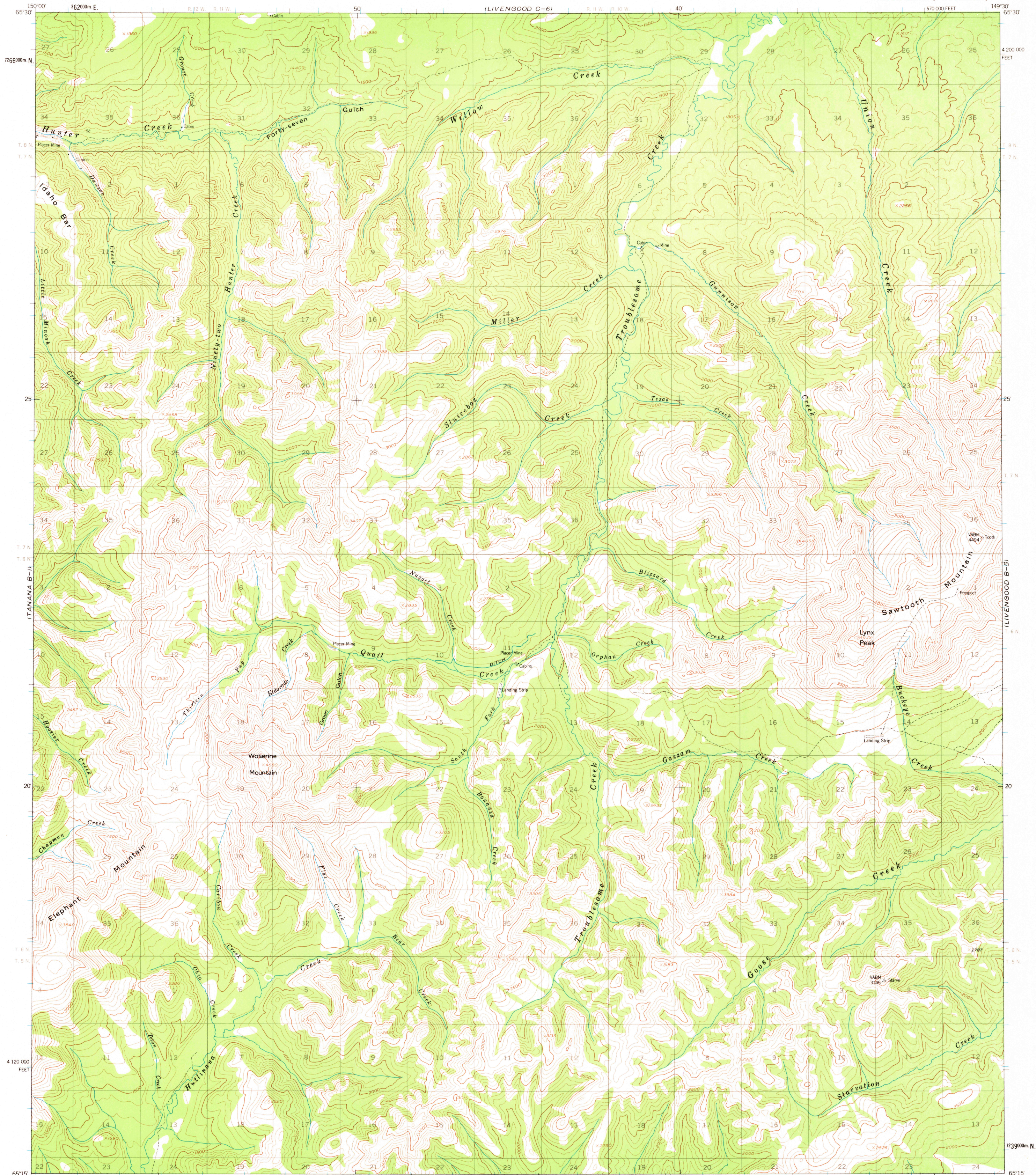


ITANANA C-11

UNITED STATES
DEPARTMENT OF THE INTERIOR
GEOLOGICAL SURVEY

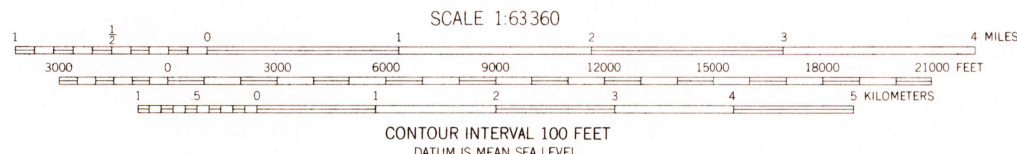
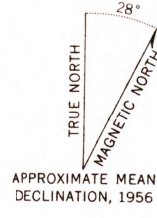
LIVENGOOD (B-6) QUADRANGLE
ALASKA
1:63 360 SERIES (TOPOGRAPHIC)

LIVENGOOD C-51



ITANANA A-11

Mapped, edited, and published by the Geological Survey
Control by USGS and USC&GS
Topography by photogrammetric methods from aerial photographs
taken 1952 and 1953, field annotated 1956. Map not field checked
Universal Transverse Mercator projection, 1927 North American datum
10,000-foot grid based on Alaska coordinate system, zone 4
1,000-meter Universal Transverse Mercator grid ticks,
zone 6, shown in blue
Land lines represent unsurveyed and unmarked locations
predetermined by the Bureau of Land Management
Folio F-6, Fairbanks Meridian



ROAD CLASSIFICATION
Trails



LIVENGOOD (B-6), ALASKA
N6515-W14930/15X30

1956
MINOR REVISIONS 1972

FOR SALE BY U. S. GEOLOGICAL SURVEY
FAIRBANKS, ALASKA 99701, DENVER, COLORADO 80225, OR WASHINGTON, D. C. 20242
A FOLDER DESCRIBING TOPOGRAPHIC MAPS AND SYMBOLS IS AVAILABLE ON REQUEST

USGS
HISTORICAL FILE
TOPOGRAPHIC DIVISION

MAR 29 1973

2690