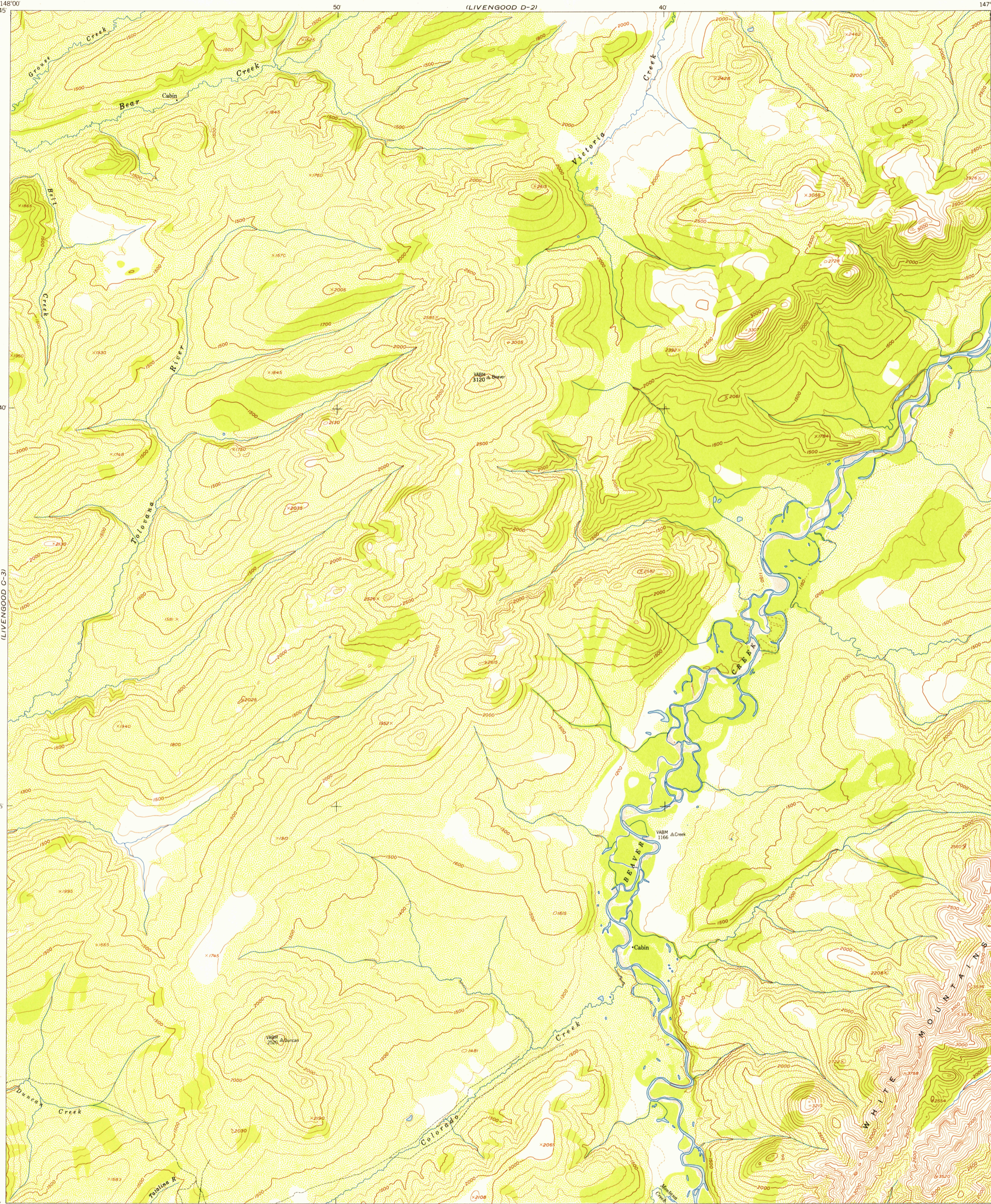
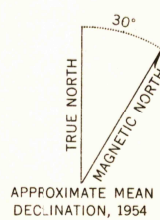


U.S.G.S.
FILE COPY
TOPOGRAPHIC DIVISION

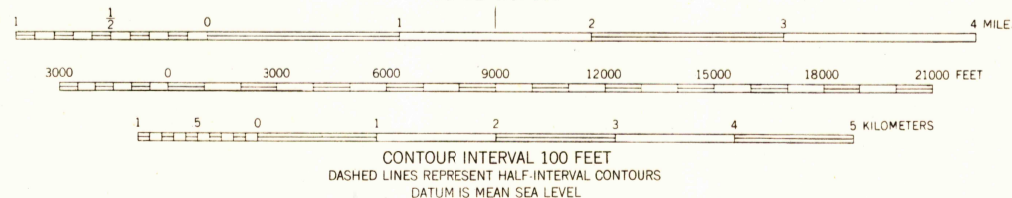
U.S.G.S.
FILE COPY
TOPOGRAPHIC DIVISION



Mapped, edited, and published by the Geological Survey
Control by USGS and USC&GS
Topography from aerial photographs by multiplex methods 1954
Aerial photographs taken 1951
Universal Transverse Mercator projection, zone 6
1927 North American datum
Unchecked elevations are shown in brown



APPROXIMATE MEAN
DECLINATION, 1954



QUADRANGLE LOCATION

ROAD CLASSIFICATION			
ALL WEATHER ROADS		DRY WEATHER ROADS	
Hard-surface	None	Improved dirt	None
Other	None	Unimproved dirt	None
		Trails	None

USGS
Historical File
Topographic Division

LIVNGOOD (C-2) ALASKA
N6530—W14730/15X30
1954

FOR SALE BY U.S. GEOLOGICAL SURVEY
FAIRBANKS, ALASKA FEDERAL CENTER, DENVER, COLORADO WASHINGTON 25, D.C.
A FOLDER DESCRIBING TOPOGRAPHIC MAPS AND SYMBOLS IS AVAILABLE ON REQUEST

APR 22 1955