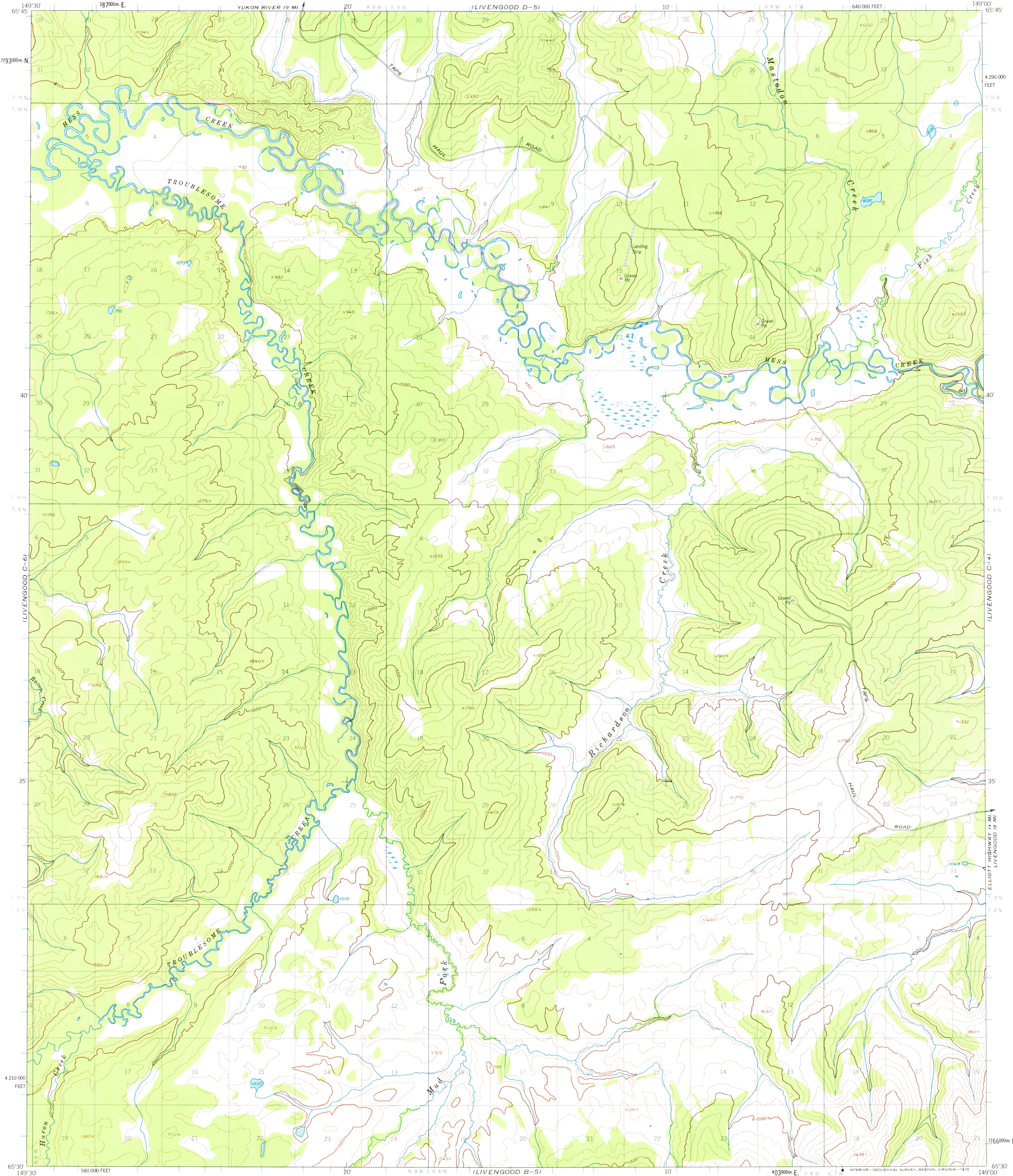


LIVENGOOD D-6)

LIVENGOOD D-4)

UNITED STATES
DEPARTMENT OF THE INTERIOR
GEOLOGICAL SURVEY

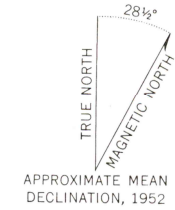
LIVENGOOD (C-5) QUADRANGLE
ALASKA
1:63 360 SERIES (TOPOGRAPHIC)



LIVENGOOD B-6)

LIVENGOOD B-4)

Mapped, edited, and published by the Geological Survey
Control by USGS
Topography by photogrammetric methods from aerial photographs
taken 1951 and 1952, field annotated 1952. Map not field checked
Universal Transverse Mercator projection, 1927 North American datum
10,000-foot grid based on Alaska coordinate system, zone 4
1000-metre Universal Transverse Mercator grid ticks,
zone 6, shown in blue
Land lines represent unurveyed and unmarked locations
predetermined by the Bureau of Land Management
Folio F-6, Fairbanks Meridian
Swamps, as portrayed, indicate only the wetter areas,
usually of low relief, as interpreted from aerial photographs



CONTOUR INTERVAL 100 FEET
DASHED LINES REPRESENT 50 FOOT CONTOURS
NATIONAL GEODETIC VERTICAL DATUM OF 1929



ROAD CLASSIFICATION
Light-duty

FOR SALE BY U. S. GEOLOGICAL SURVEY
FAIRBANKS, ALASKA 99701, DENVER, COLORADO 80225, OR RESTON, VIRGINIA 22092
A FOLDER DESCRIBING TOPOGRAPHIC MAPS AND SYMBOLS IS AVAILABLE ON REQUEST

LIVENGOOD (C-5), ALASKA
N6530-W14900/15X30
1952
MINOR REVISIONS 1974

USGS
HISTORICAL FILE
TOPOGRAPHIC DIVISION

JAN 21 1976