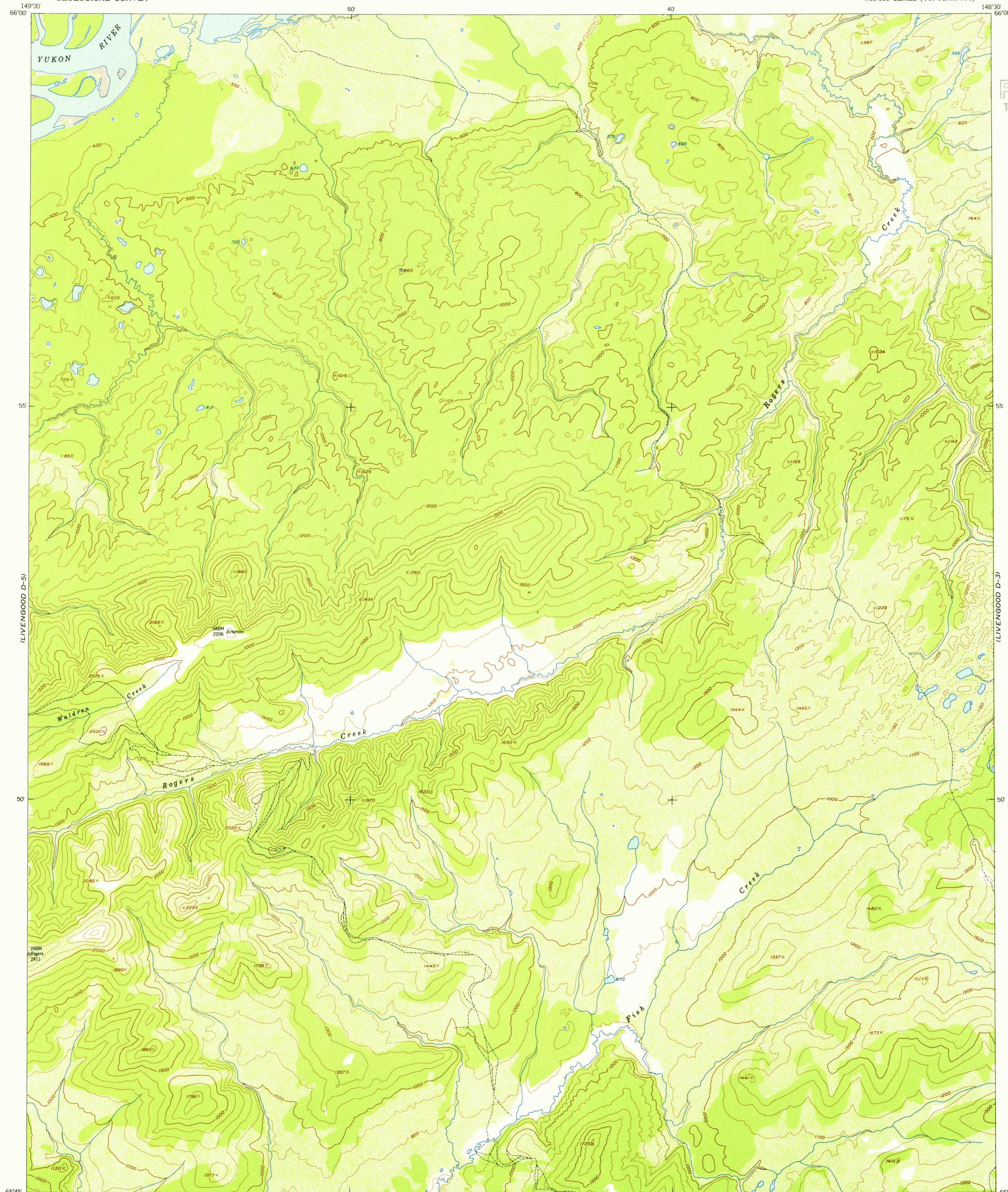
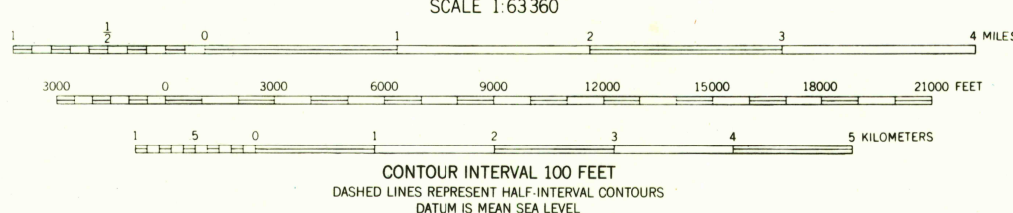
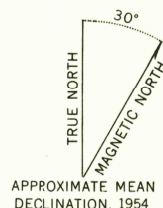


U.S.G.S.
FILE COPY
TOPOGRAPHIC DIVISION



Mapped, edited, and published by the Geological Survey
Control by USGS and USC&GS
Topography from aerial photographs by multiplex methods 1954
Aerial photographs taken 1951
Universal Transverse Mercator projection, zone 6
1927 North American datum
Unchecked elevations are shown in brown and blue



ROAD CLASSIFICATION

ALL WEATHER ROADS	DRY WEATHER ROADS
Hard-surface	None
Other	None
Trails	None

LIVENGOOD (D-4), ALASKA
N6545-W14830/15X30
1954

U.S.G.S.
FILE COPY
TOPOGRAPHIC DIVISION

USGS
Historical File
Topographic Division

MAY 5 1955