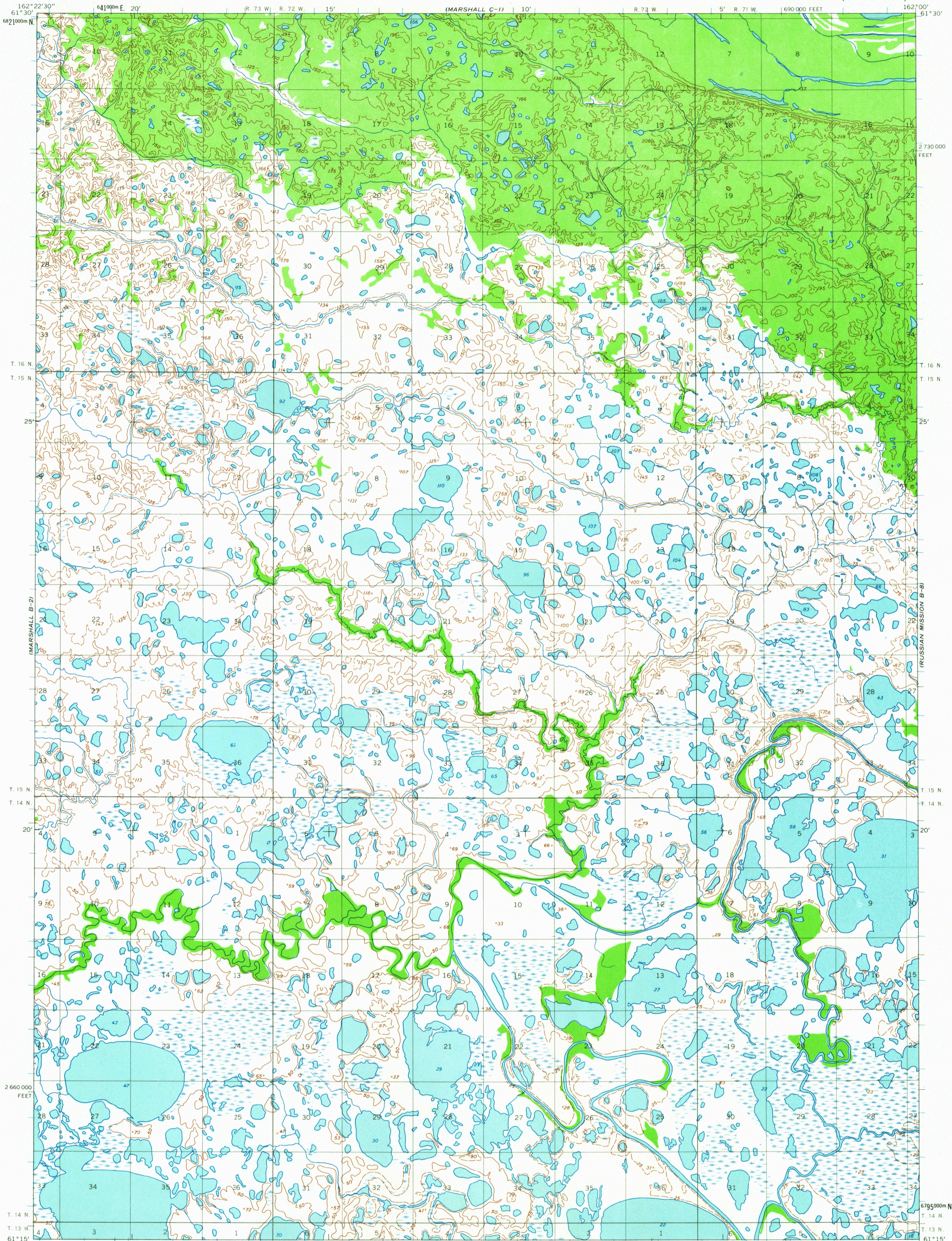
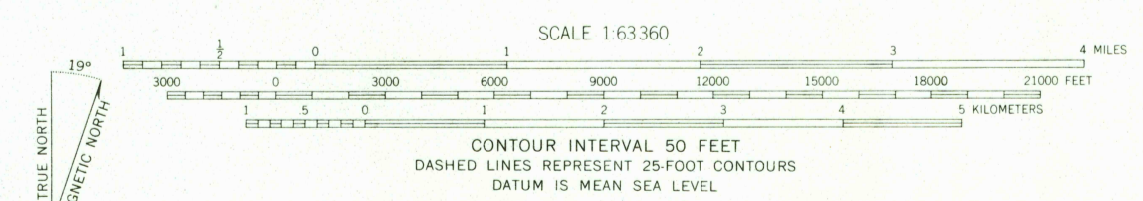


UNITED STATES  
DEPARTMENT OF THE INTERIOR  
GEOLOGICAL SURVEY

MARSHALL (B-1) QUADRANGLE  
ALASKA  
1:63 360 SERIES (TOPOGRAPHIC)



Mapped by the Army Map Service  
Published for civil use by the Geological Survey  
Control by USGS, USC&GS, and USCE  
Topography by photogrammetric methods from aerial photographs  
taken 1951, field annotated 1952-1954. Map not field checked  
Universal Transverse Mercator projection, 1927 North American datum  
10,000-foot grid based on Alaska coordinate system, zone 7  
1000-meter Universal Transverse Mercator grid ticks,  
zone 3, shown in blue  
Land lines represent unsurveyed and unmarked locations  
predetermined by the Bureau of Land Management  
Folio S-9, Seward Meridian



USGS  
Historical File  
Topographic Division  
ROAD CLASSIFICATION  
No roads or trails in this area



MARSHALL (B-1), ALASKA  
N6115-W16200/15X22.5  
1954

FOR SALE BY U.S. GEOLOGICAL SURVEY  
FAIRBANKS, ALASKA, DENVER 25, COLORADO OR WASHINGTON 25, D. C.  
A FOLDER DESCRIBING TOPOGRAPHIC MAPS AND SYMBOLS IS AVAILABLE ON REQUEST

APR 5 1965  
2005

U.S.G.S.  
FILE COPY  
TOPOGRAPHIC DIVISION