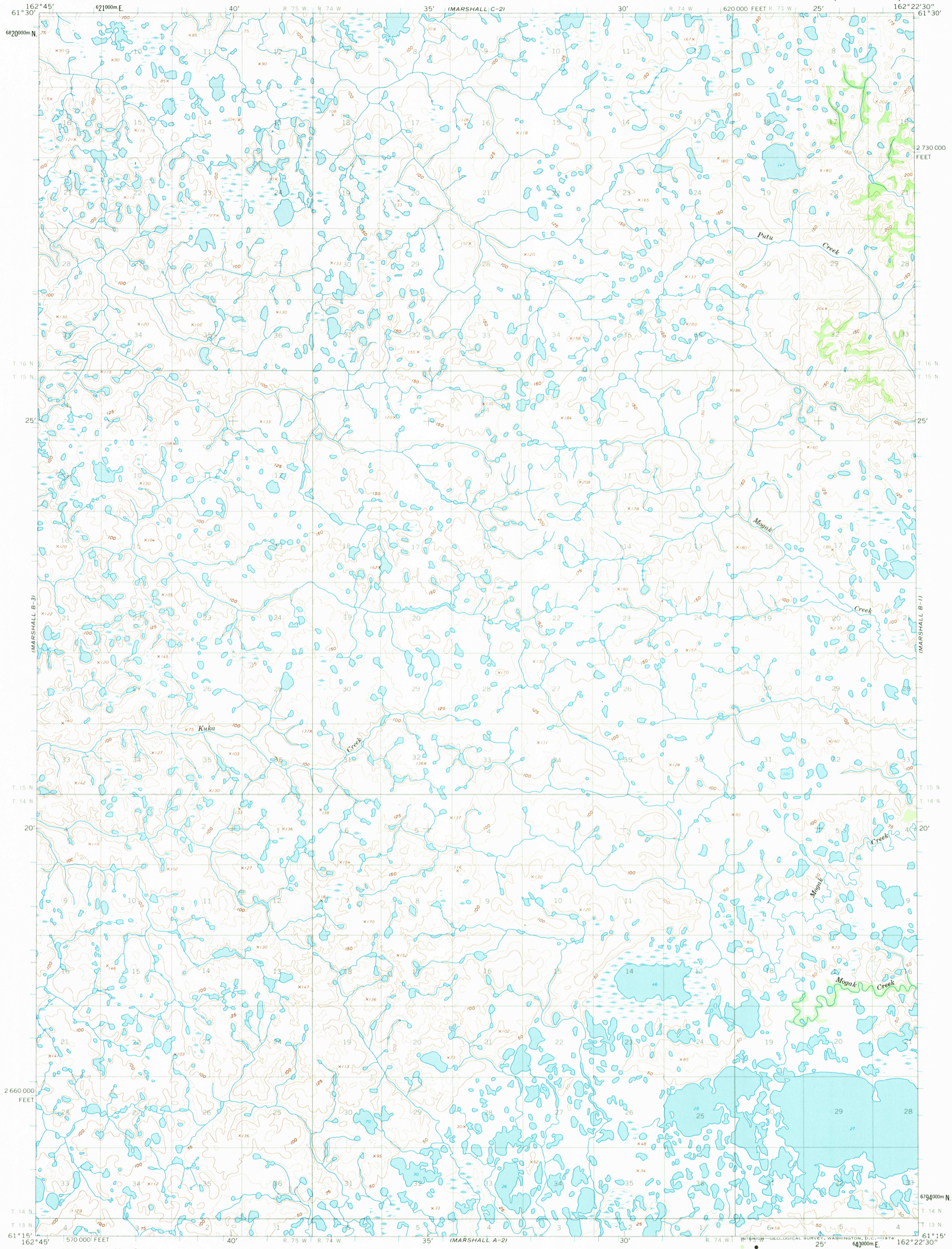


UNITED STATES
DEPARTMENT OF THE INTERIOR
GEOLOGICAL SURVEY

MARSHALL (B-2) QUADRANGLE
ALASKA
1:63 360 SERIES (TOPOGRAPHIC)



Mapped by the Army Map Service
Edited and published by the Geological Survey

Control by USGS, USC&GS, and USCE

Topography by photogrammetric methods from aerial photographs
taken 1951, field annotated 1954. Map not field checked

Universal Transverse Mercator projection. 1927 North American datum
10,000-foot grid based on Alaska coordinate system, zone 7
1000-meter Universal Transverse Mercator grid ticks,
zone 3, shown in blue

Land lines represent unsurveyed and unmarked locations
preetermined by the Bureau of Land Management
Folio S-9, Seward Meridian



CONTOUR INTERVAL 50 FEET
DOTTED LINES REPRESENT 25-FOOT CONTOURS
DATUM IS MEAN SEA LEVEL

TRUE NORTH
MAGNETIC NORTH
APPROXIMATE MEAN
DECLINATION, 1954

FOR SALE BY U.S. GEOLOGICAL SURVEY
FAIRBANKS, ALASKA, 99701, DENVER, COLORADO 80225 OR WASHINGTON, D. C. 20242
A FOLDER DESCRIBING TOPOGRAPHIC MAPS AND SYMBOLS IS AVAILABLE ON REQUEST



ROAD CLASSIFICATION
No roads or trails in this area

MARSHALL (B-2), ALASKA
N6115—W16222.5/15 X 2.5

1954

USGS
HISTORICAL FILE

2590

JAN 29 1974