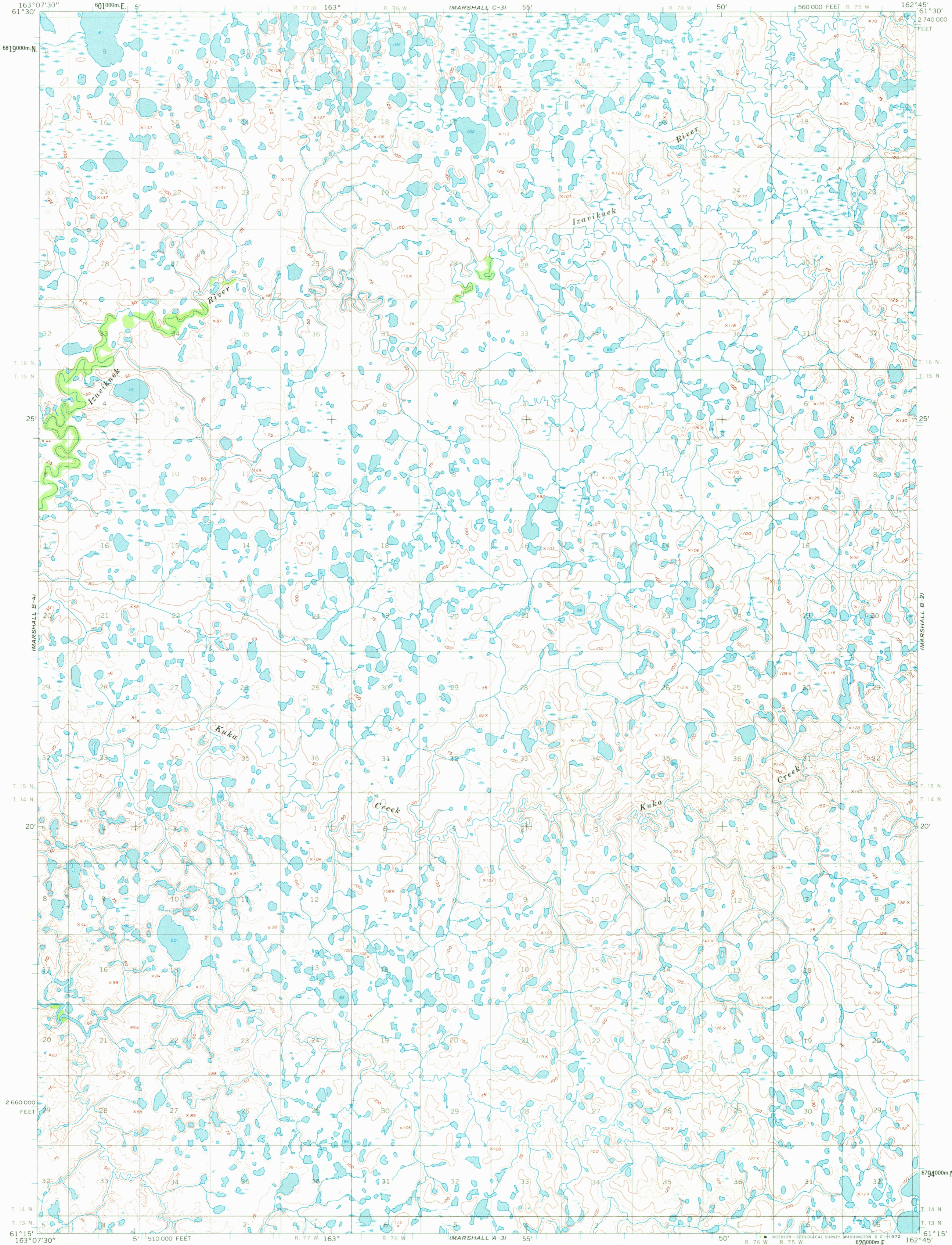


UNITED STATES  
DEPARTMENT OF THE INTERIOR  
GEOLOGICAL SURVEY

MARSHALL (B-3) QUADRANGLE  
ALASKA  
1:63 360 SERIES (TOPOGRAPHIC)

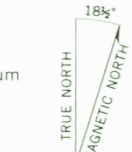


Mapped by the Army Map Service  
Edited and published by the Geological Survey  
Control by USGS, USC&GS, and USCE

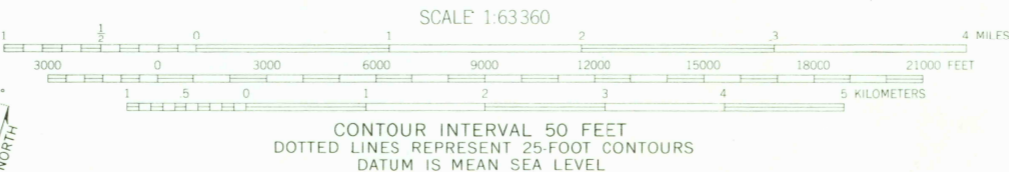
Topography by photogrammetric methods from aerial photographs  
taken 1951 and 1952, field annotated 1954. Map not field checked

Universal Transverse Mercator projection. 1927 North American datum  
10,000-foot grid based on Alaska coordinate system, zone 7  
1000-meter Universal Transverse Mercator grid ticks,  
zone 3, shown in blue.

Land lines represent unsurveyed and unmarked locations  
predetermined by the Bureau of Land Management  
Folio S-9, Seward Meridian



APPROXIMATE MEAN  
DECLINATION, 1954



USGS  
Historical File  
Topographic Division

ROAD CLASSIFICATION  
No roads or trails in this area



MARSHALL (B-3), ALASKA  
N6115-W16245/15 X 22.5

1954

FOR SALE BY U. S. GEOLOGICAL SURVEY  
FAIRBANKS, ALASKA 99701, DENVER, COLORADO 80225 OR WASHINGTON, D. C. 20242  
A FOLDER DESCRIBING TOPOGRAPHIC MAPS AND SYMBOLS IS AVAILABLE ON REQUEST

USGS  
HISTORICAL FILE  
TOPOGRAPHIC DIVISION

OCT 26 1972

2245