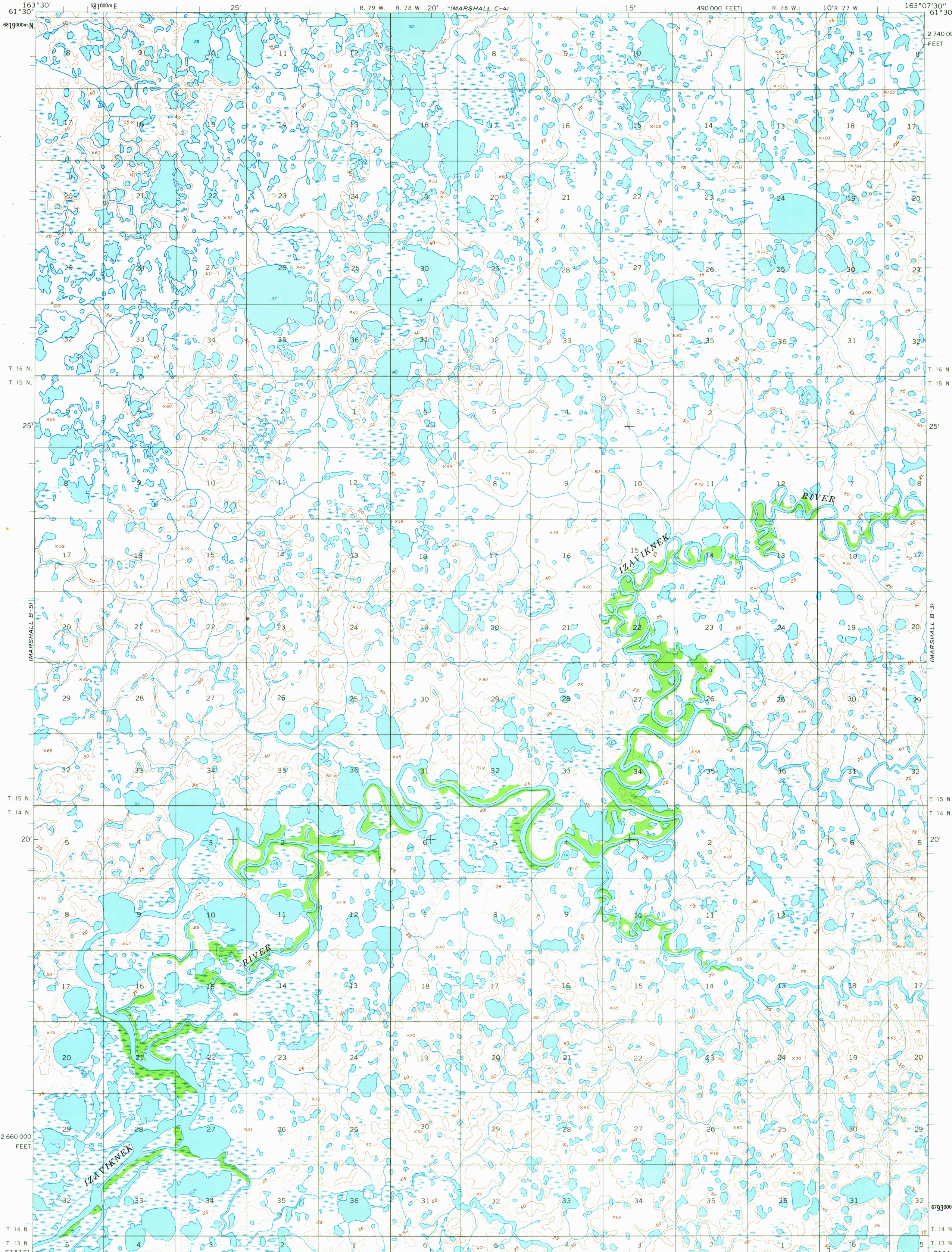


UNITED STATES  
DEPARTMENT OF THE INTERIOR  
GEOLOGICAL SURVEY

MARSHALL (B-4) QUADRANGLE  
ALASKA  
1:63 360 SERIES (TOPOGRAPHIC)

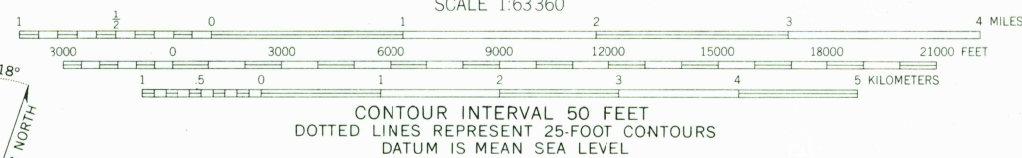
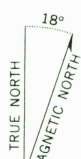


Mapped by the Army Map Service  
Edited and published by the Geological Survey  
Control by USGS, USC&GS, and USCE

Topography by photogrammetric methods from aerial photographs  
taken 1951, field annotated 1954. Map not field checked  
Universal Transverse Mercator projection. 1927 North American datum  
10,000-foot grid based on Alaska coordinate system, zone 7  
1000-meter Universal Transverse Mercator grid ticks,  
zone 3, shown in blue

Land lines represent unsurveyed and unmarked locations  
pre-determined by the Bureau of Land Management  
Folio S-9, Seward Meridian

APPROXIMATE MEAN  
DECLINATION, 1954



CONTOUR INTERVAL 50 FEET  
DOTTED LINES REPRESENT 25-FOOT CONTOURS  
DATUM IS MEAN SEA LEVEL

FOR SALE BY U.S. GEOLOGICAL SURVEY  
FAIRBANKS, ALASKA DENVER 25, COLORADO WASHINGTON 25, D.C.  
A FOLDER DESCRIBING TOPOGRAPHIC MAPS AND SYMBOLS IS AVAILABLE ON REQUEST



USGS  
Historical File  
Topographic Division

ROAD CLASSIFICATION  
No roads or trails in this area

MARSHALL (B-4), ALASKA  
N6115-W16307.5/15 X22.5

1954

AUG 21 1964

1805

USGS  
FILE COPY  
TOPOGRAPHIC DIVISION