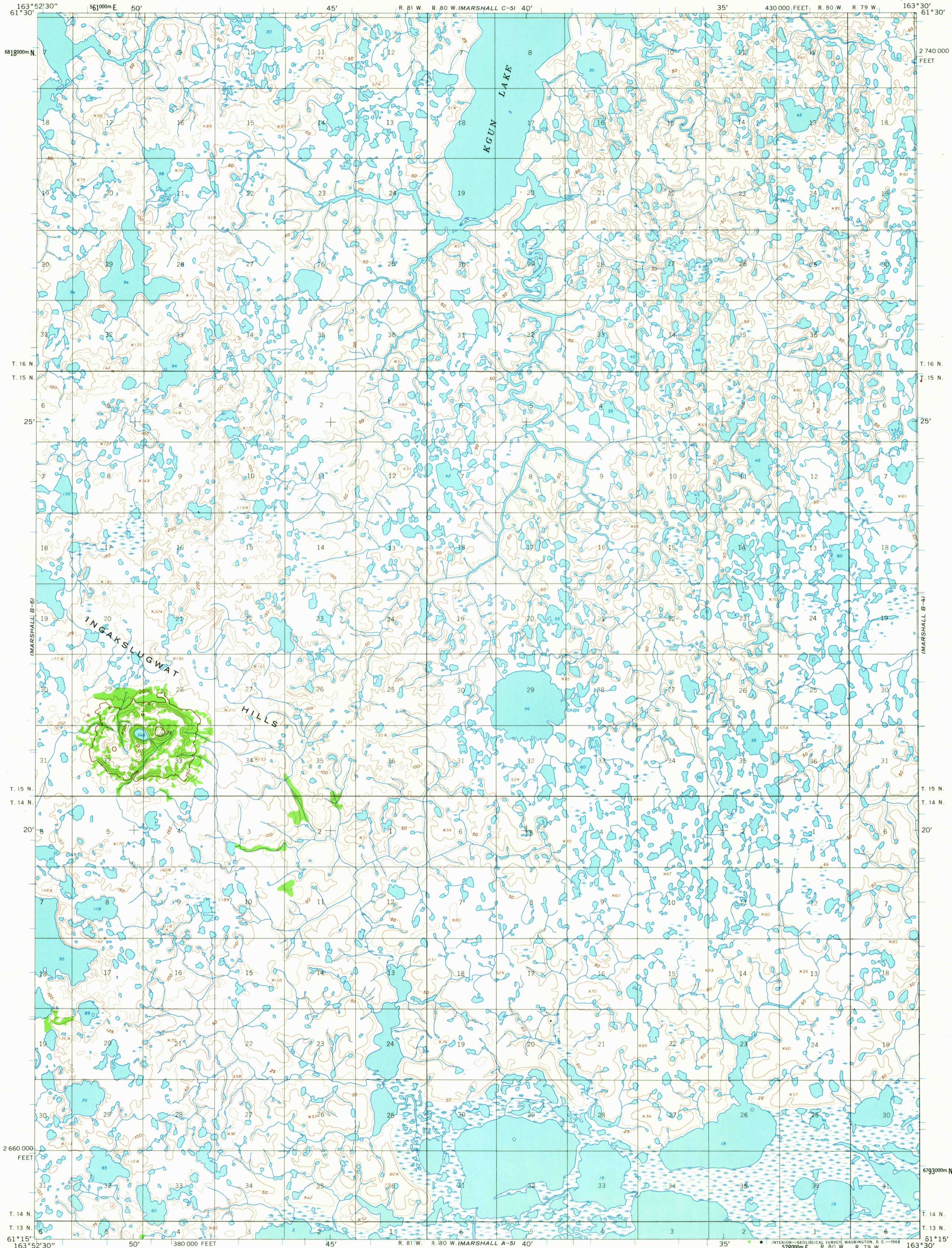
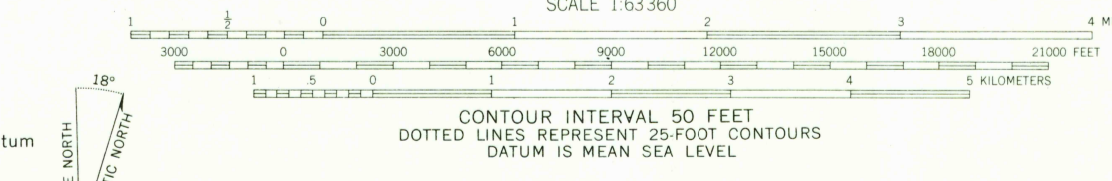


UNITED STATES
DEPARTMENT OF THE INTERIOR
GEOLOGICAL SURVEY

MARSHALL (B-5) QUADRANGLE
ALASKA
1:63 360 SERIES (TOPOGRAPHIC)



Mapped by the Army Map Service
Edited and published by the Geological Survey
Control by USCGS and USCE
Topography by photogrammetric methods from aerial photographs
taken 1951, field annotated 1953. Map not field checked
Universal Transverse Mercator projection. 1927 North American datum
10,000-foot grid based on Alaska coordinate system, zone 7
1000-meter Universal Transverse Mercator grid ticks,
zone 3, shown in blue
Land lines represent unsurveyed and unmarked locations
predetermined by the Bureau of Land Management
Folios S-8 and S-9, Seward Meridian



USGS
Historical File
Topographic Division
ROAD CLASSIFICATION
No roads or trails in this area



MARSHALL (B-5), ALASKA
N6115-W16330/15 X 22.5
1953

FOR SALE BY U. S. GEOLOGICAL SURVEY
FAIRBANKS, ALASKA DENVER 25, COLORADO WASHINGTON 25, D. C.
A FOLDER DESCRIBING TOPOGRAPHIC MAPS AND SYMBOLS IS AVAILABLE ON REQUEST

AUG 21 1964

2225

USGS
FILE COPY
TOPOGRAPHIC DIVISION