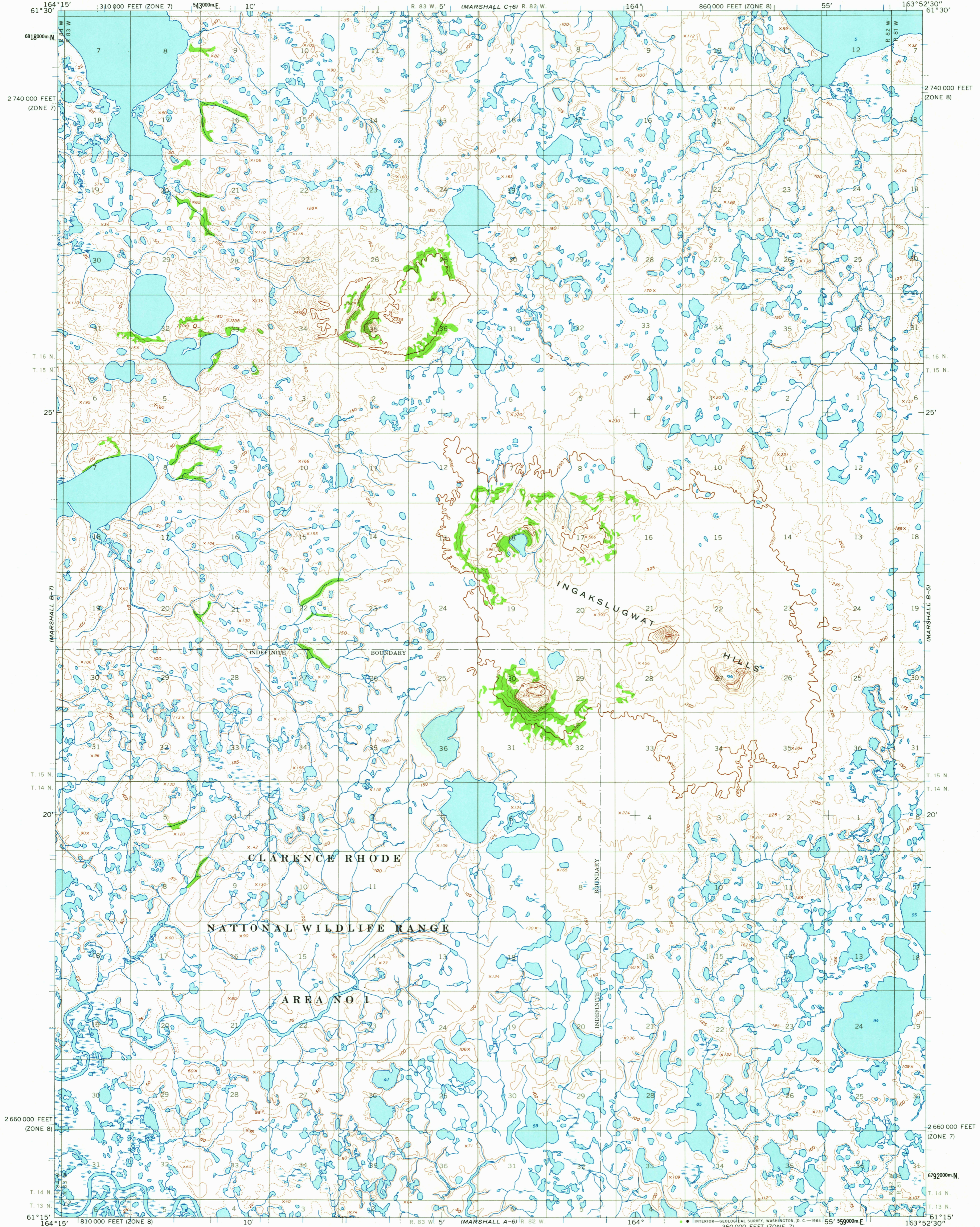
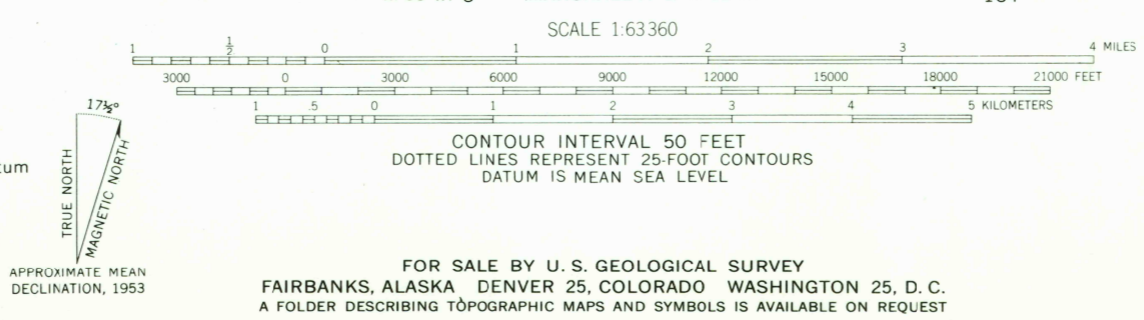


UNITED STATES
DEPARTMENT OF THE INTERIOR
GEOLOGICAL SURVEY

MARSHALL (B-6) QUADRANGLE
ALASKA
1:63 360 SERIES (TOPOGRAPHIC)



Mapped by the Army Map Service
Edited and published by the Geological Survey
Control by USC&GS and USCE
Topography by photogrammetric methods from aerial photographs
taken 1951, field annotated 1953. Map not field checked
Universal Transverse Mercator projection. 1927 North American datum
10,000-foot grids based on Alaska coordinate system, zones 8 and 7
1000-meter Universal Transverse Mercator grid ticks,
zone 3, shown in blue
Land lines represent unsurveyed and unmarked locations
predetermined by the Bureau of Land Management
Folio S-8, Seward Meridian



USCS
Historical File
Topographic Division
ROAD CLASSIFICATION
No roads or trails in this area
MARSHALL (B-6), ALASKA
N6115-W16352.5/15X22.5
1953
TOPOGRAPHIC DIVISION

SEP 2 1 1964

1805