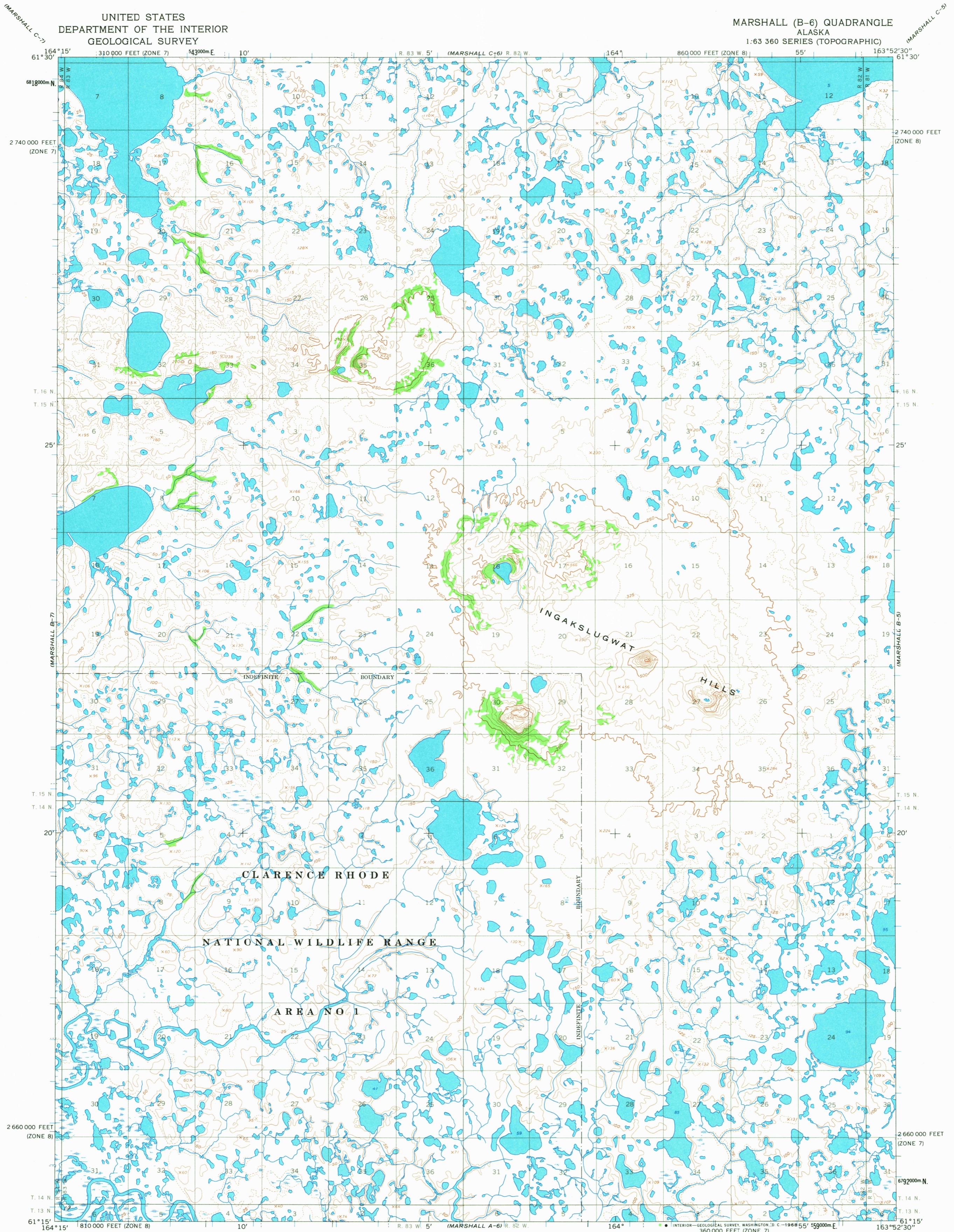


UNITED STATES  
DEPARTMENT OF THE INTERIOR  
GEOLOGICAL SURVEY

MARSHALL (B-6) QUADRANGLE  
ALASKA  
1:63 360 SERIES (TOPOGRAPHIC)



Mapped by the Army Map Service  
Edited and published by the Geological Survey

Control by USC&GS and USCE

Topography by photogrammetric methods from aerial photographs  
taken 1951, field annotated 1953. Map not field checked

Universal Transverse Mercator projection. 1927 North American datum  
10,000-foot grids based on Alaska coordinate system, zones B and 7  
1000-meter Universal Transverse Mercator grid ticks,  
zone 3, shown in blue

Land lines represent unsurveyed and unmarked locations  
predetermined by the Bureau of Land Management  
Folio S-8, Seward Meridian



CONTOUR INTERVAL 50 FEET  
DOTTED LINES REPRESENT 25-FOOT CONTOURS  
DATUM IS MEAN SEA LEVEL

FOR SALE BY U. S. GEOLOGICAL SURVEY  
FAIRBANKS, ALASKA 99701, DENVER, COLORADO 80225 OR WASHINGTON, D. C. 20242  
A FOLDER DESCRIBING TOPOGRAPHIC MAPS AND SYMBOLS IS AVAILABLE ON REQUEST



MARSHALL (B-6), ALASKA  
N6115-W16352.5/15x22.5

1953

USGS NHD HISTORICAL MAP ARCHIVES

ROAD CLASSIFICATION  
No roads or trails in this area

MARSHALL B-6  
ISBN # 0607025492 AK 063  
TF

