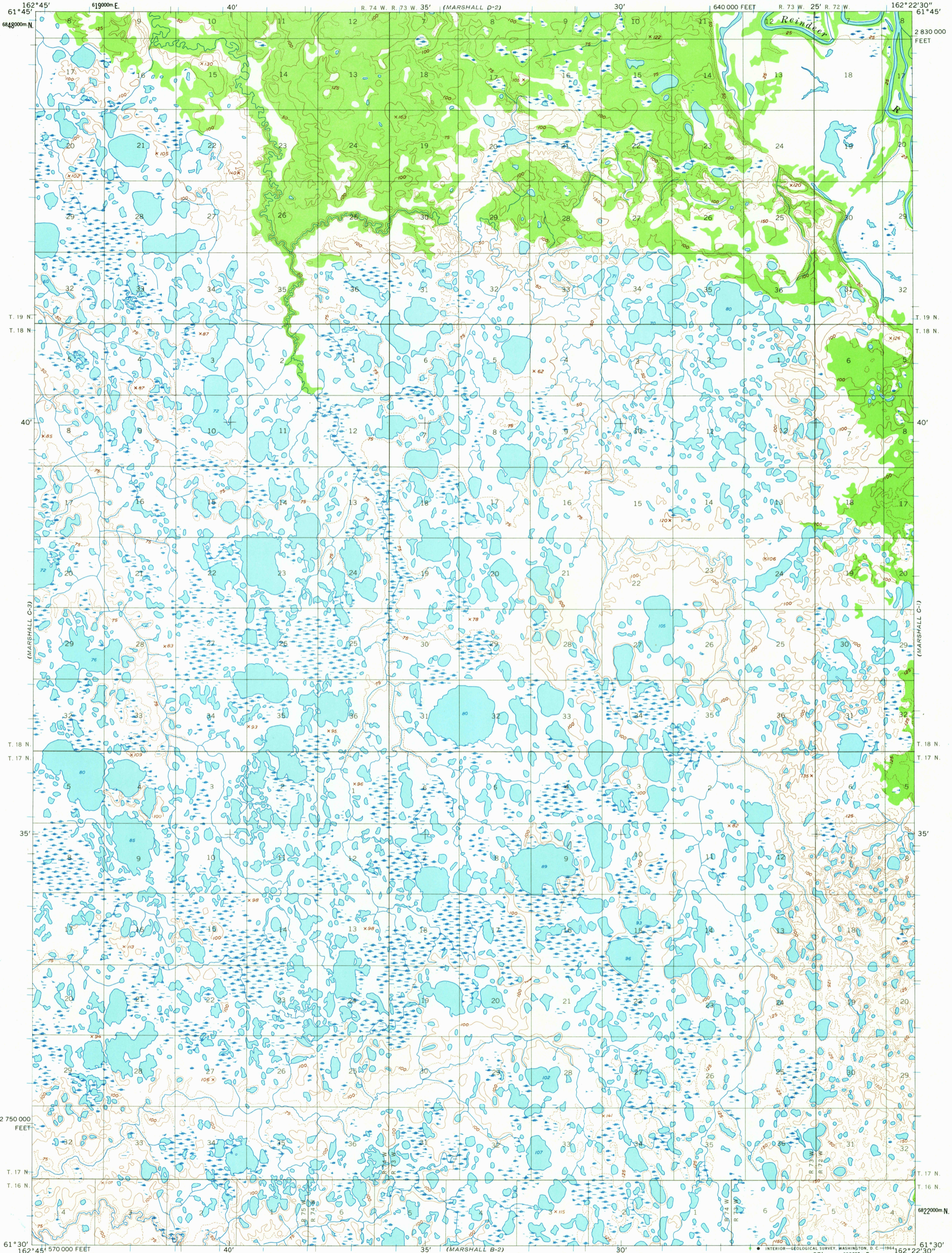


UNITED STATES
DEPARTMENT OF THE INTERIOR
GEOLOGICAL SURVEY

MARSHALL (C-2) QUADRANGLE
ALASKA
1:63 360 SERIES (TOPOGRAPHIC)



Mapped by the Army Map Service
Edited and published by the Geological Survey
Control by USC&GS and USCE

Topography by photogrammetric methods from aerial photographs
taken 1951, field annotated 1954. Map not field checked.
Universal Transverse Mercator projection, 1927 North American datum
10,000-foot grid based on Alaska coordinate system, zone 7
1000-meter Universal Transverse Mercator grid ticks,
zone 3, shown in blue
Land lines represent unsurveyed and unmarked locations
determined by the Bureau of Land Management
Folios S-6 and S-9, Seward Meridian

TRUE NORTH
MAGNETIC NORTH
APPROXIMATE MEAN
DECLINATION, 1954

SCALE 1:63 360
0 3000 6000 9000 12000 15000 18000 21000 FEET
0 5 10 15 20 25 30 KILOMETERS

CONTOUR INTERVAL 50 FEET
DOTTED LINES REPRESENT 25-FOOT CONTOURS
DATUM IS MEAN SEA LEVEL



USGS ROAD CLASSIFICATION
Historical File roads or trails in this area
Topographic Division

MARSHALL (C-2), ALASKA
N6130—W1622.5/15 X 22.5
1954

FOR SALE BY U.S. GEOLOGICAL SURVEY
FAIRBANKS, ALASKA, DENVER 25, COLORADO OR WASHINGTON 25, D. C.
A FOLDER DESCRIBING TOPOGRAPHIC MAPS AND SYMBOLS IS AVAILABLE ON REQUEST

SEP 24 1964

2235
U.S.G.S.
FILE COPY
TOPOGRAPHIC DIVISION