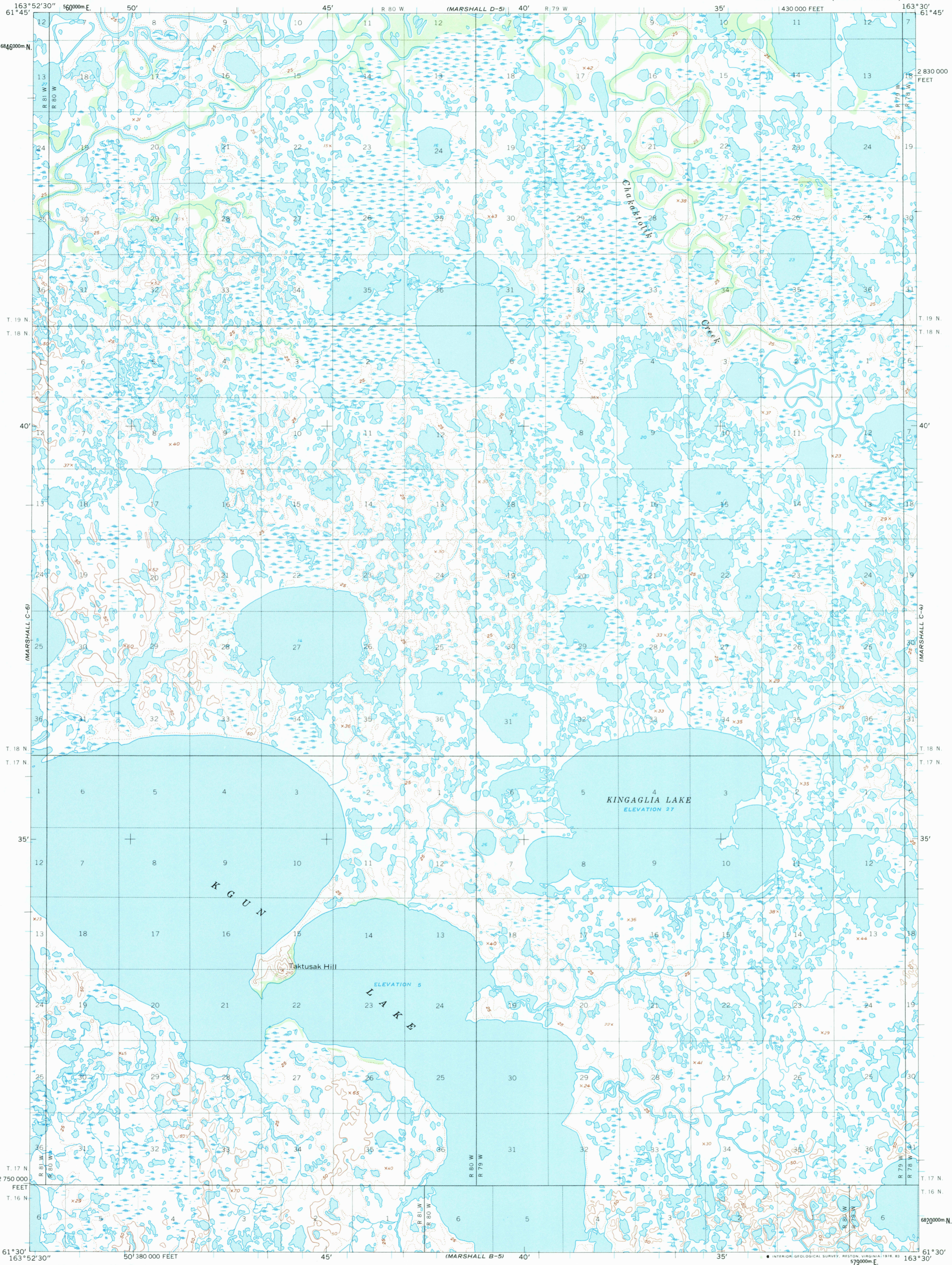


UNITED STATES
DEPARTMENT OF THE INTERIOR
GEOLOGICAL SURVEY

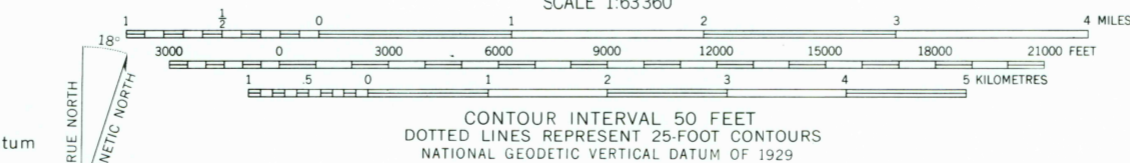
MARSHALL (C-5) QUADRANGLE
ALASKA
1:63 360 SERIES (TOPOGRAPHIC)



Mapped by the Army Map Service
Edited and published by the Geological Survey
Control by USC&GS and USCE

Topography by photogrammetric methods from aerial photographs
taken 1951, field annotated 1952. Map not field checked
Universal Transverse Mercator projection. 1927 North American datum
10,000-foot grid based on Alaska coordinate system, zone 7
1000-metre Universal Transverse Mercator grid ticks,
zone 3, shown in blue

Land lines represent unsurveyed and unmarked locations
predetermined by the Bureau of Land Management
Folios S-6, S-7, S-8, and S-9, Seward Meridian



APPROXIMATE MEAN
MAGNETIC NORTH
DECLINATION, 1952

FOR SALE BY U. S. GEOLOGICAL SURVEY
FAIRBANKS, ALASKA 99701, DENVER, COLORADO 80225, OR RESTON, VIRGINIA 22092
A FOLDER DESCRIBING TOPOGRAPHIC MAPS AND SYMBOLS IS AVAILABLE ON REQUEST



MARSHALL (C-5), ALASKA
N6130—W16330/15 X 22.5
1952

RETURN TO:
USGS NHD HISTORICAL MAP ARCHIVES

MARSHALL C-5
ISBN # 0607025565 AK 063
TF

