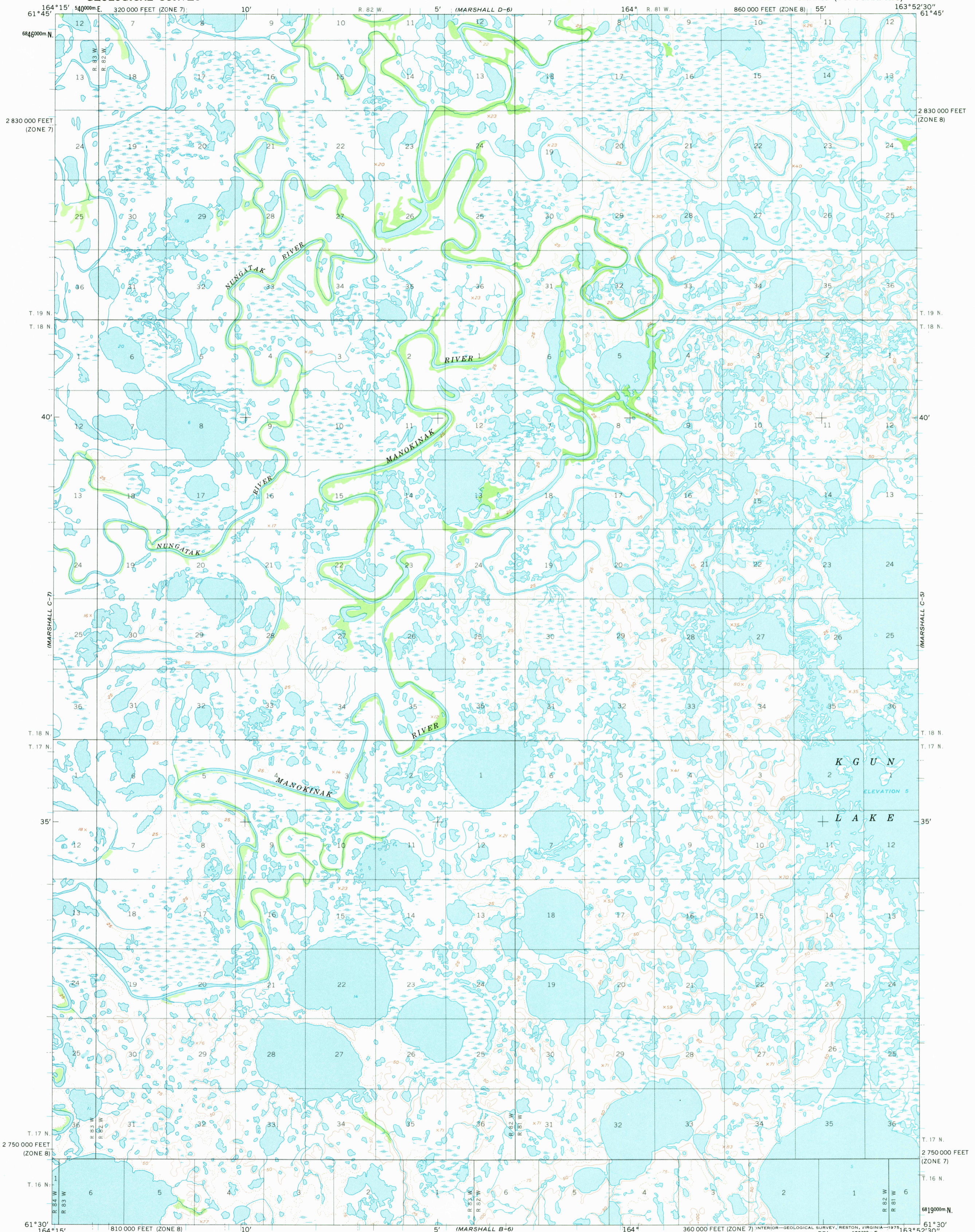
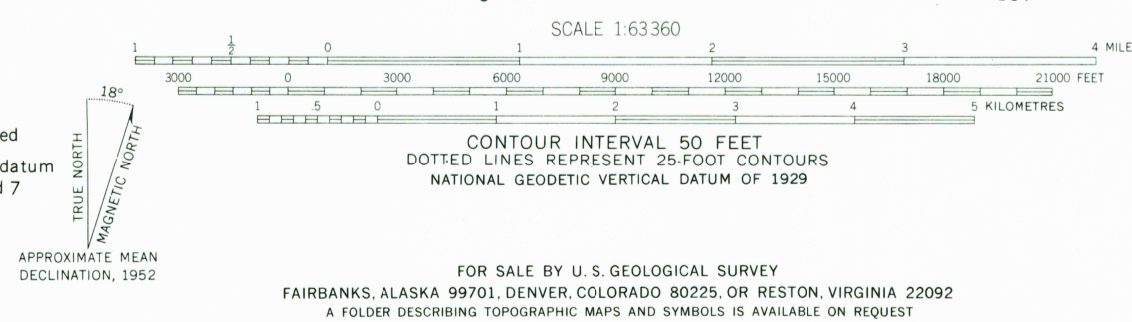


UNITED STATES
DEPARTMENT OF THE INTERIOR
GEOLOGICAL SURVEY

MARSHALL (C-6) QUADRANGLE
ALASKA
1:63 360 SERIES (TOPOGRAPHIC)



Mapped by the Army Map Service
Edited and published by the Geological Survey
Control by USC&GS and USCE
Topography by photogrammetric methods from aerial photographs
taken 1951 and 1955, field annotated 1952. Map not field checked
Universal Transverse Mercator projection. 1927 North American datum
10,000-foot grids based on Alaska coordinate system, zones 8 and 7
1000-metre Universal Transverse Mercator grid ticks,
zone 3, shown in blue
Land lines represent unsurveyed and unmarked locations
predetermined by the Bureau of Land Management
Folios S-7 and S-8, Seward Meridian



ROAD CLASSIFICATION
No roads or trails in this area

MARSHALL (C-6), ALASKA
N6130—W16352.5/15x22.5
1952

QUADRANGLE LOCATION

AUG 28 1975