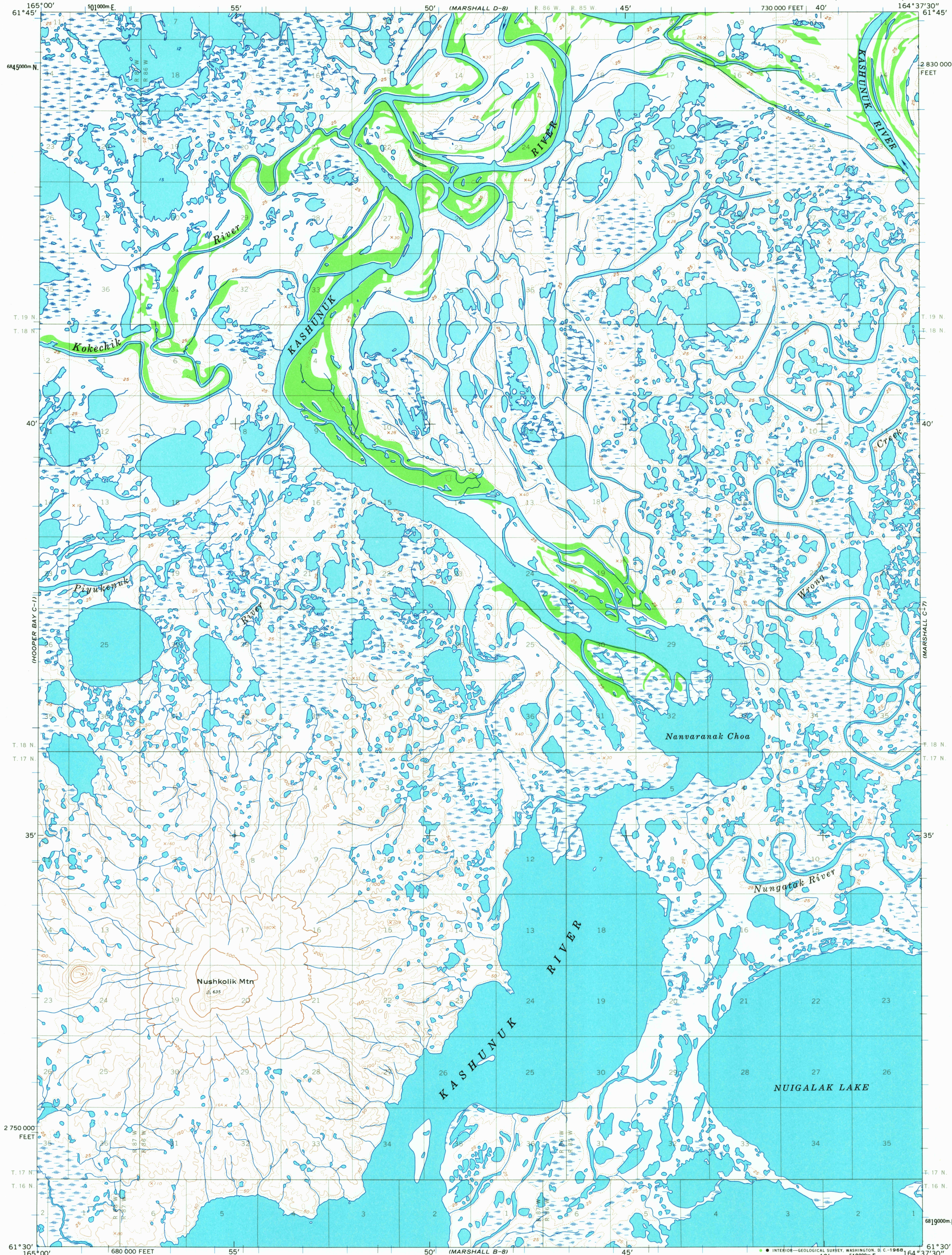


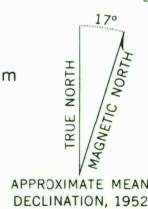
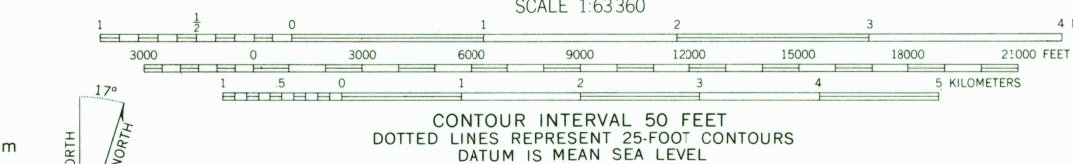
UNITED STATES
DEPARTMENT OF THE INTERIOR
GEOLOGICAL SURVEY

MARSHALL (C-8) QUADRANGLE
ALASKA
1:63 360 SERIES (TOPOGRAPHIC)



Maped by the Army Map Service
Edited and published by the Geological Survey
Control by USC&GS and USCE

Topography by photogrammetric methods from aerial photographs
taken 1951 and 1955, field annotated 1952. Map not field checked
Universal Transverse Mercator projection, 1927 North American datum
10,000-foot grid based on Alaska coordinate system, zone 8
1000-meter Universal Transverse Mercator grid ticks,
zone 3, shown in blue
Land lines represent unsurveyed and unmarked locations
predetermined by the Bureau of Land Management
Folios S-7 and S-8, Seward Meridian



FOR SALE BY U.S. GEOLOGICAL SURVEY
FAIRBANKS, ALASKA, 99701, DENVER, COLORADO 80225 OR WASHINGTON, D. C. 20242
A FOLDER DESCRIBING TOPOGRAPHIC MAPS AND SYMBOLS IS AVAILABLE ON REQUEST



RETURN TO:
USGS NHD HISTORICAL MAP ARCHIVES

MARSHALL (C-8), ALASKA
N6130—W16437.5/15X22.5

1952

ROAD CLASSIFICATION
No roads or trails in this area

MARSHALL C-8

ISBN # 060702559X AK 063

TF

