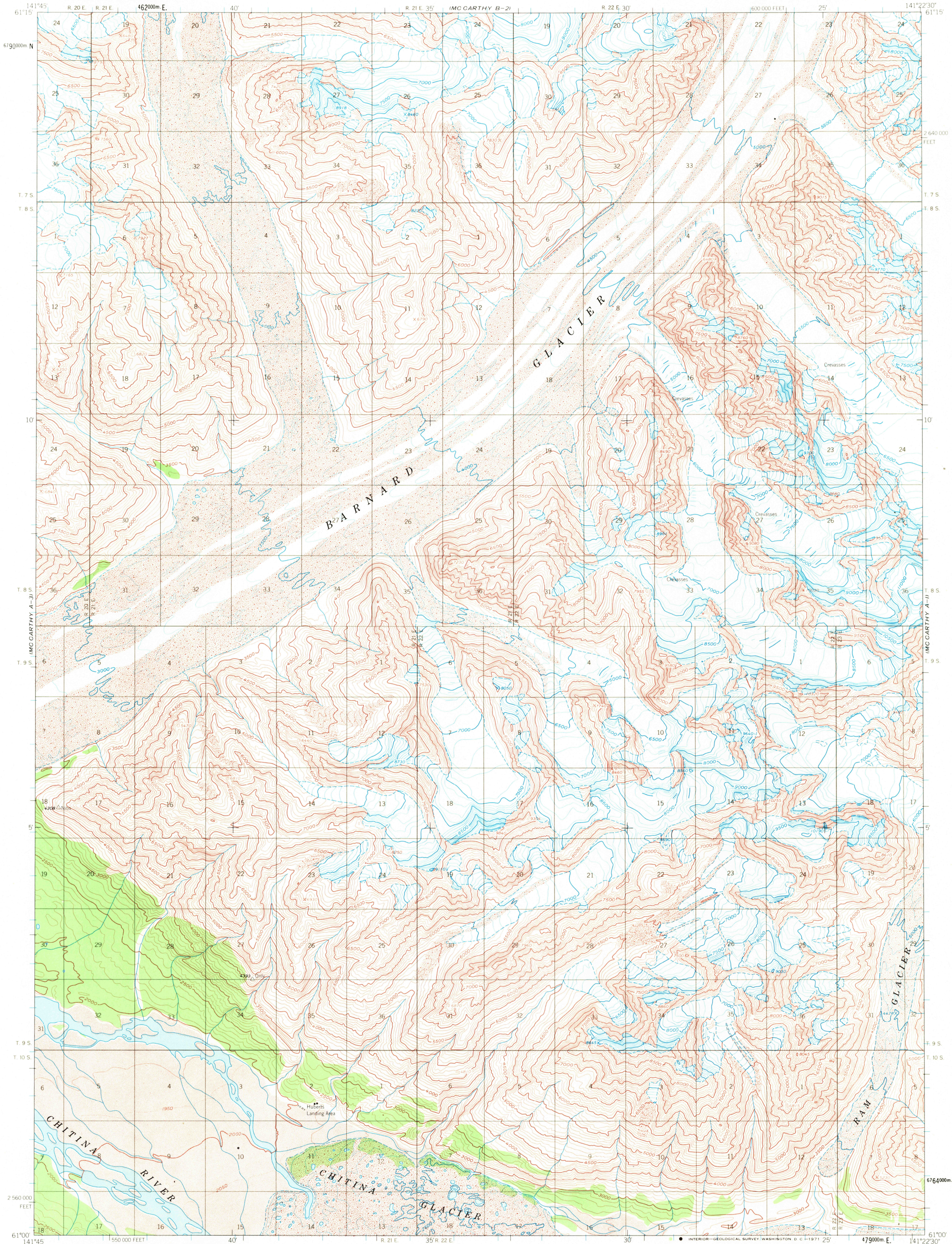
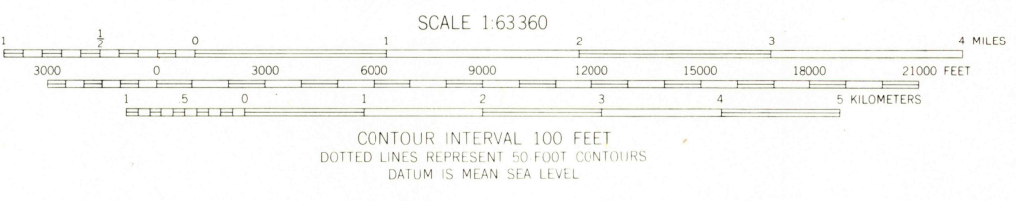
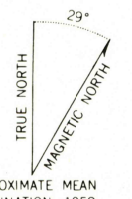


UNITED STATES
DEPARTMENT OF THE INTERIOR
GEOLOGICAL SURVEY

MCCARTHY (A-2) QUADRANGLE
ALASKA
1:63,360 SERIES (TOPOGRAPHIC)



Mapped, edited, and published by the Geological Survey
Control by USGS, USC&GS, and International Boundary Commission
Topography by photogrammetric methods from aerial photographs
taken 1957, field annotated 1959. Map not field checked
Universal Transverse Mercator projection, 1927 North American datum
10,000-foot grid based on Alaska coordinate system, zone 2
1000-meter Universal Transverse Mercator grid ticks,
zone 7, shown in blue
Land lines represent unsurveyed and unmarked locations
predetermined by the Bureau of Land Management
Folio CR 7, Copper River Meridian



ROAD CLASSIFICATION
No roads or trails in this area
USGS NMD HISTORICAL MAP ARCHIVES
MCCARTHY (A-2), ALASKA
N6103-W14122.5/15X22.5
1959

FOR SALE BY U.S. GEOLOGICAL SURVEY
FAIRBANKS, ALASKA 99701, DENVER, COLORADO 80225, OR WASHINGTON, D.C. 20242
A FOLDER DESCRIBING TOPOGRAPHIC MAPS AND SYMBOLS IS AVAILABLE ON REQUEST

MC CARTHY A-2
ISBN # 0607025700 AK 063
TF
9780607025705