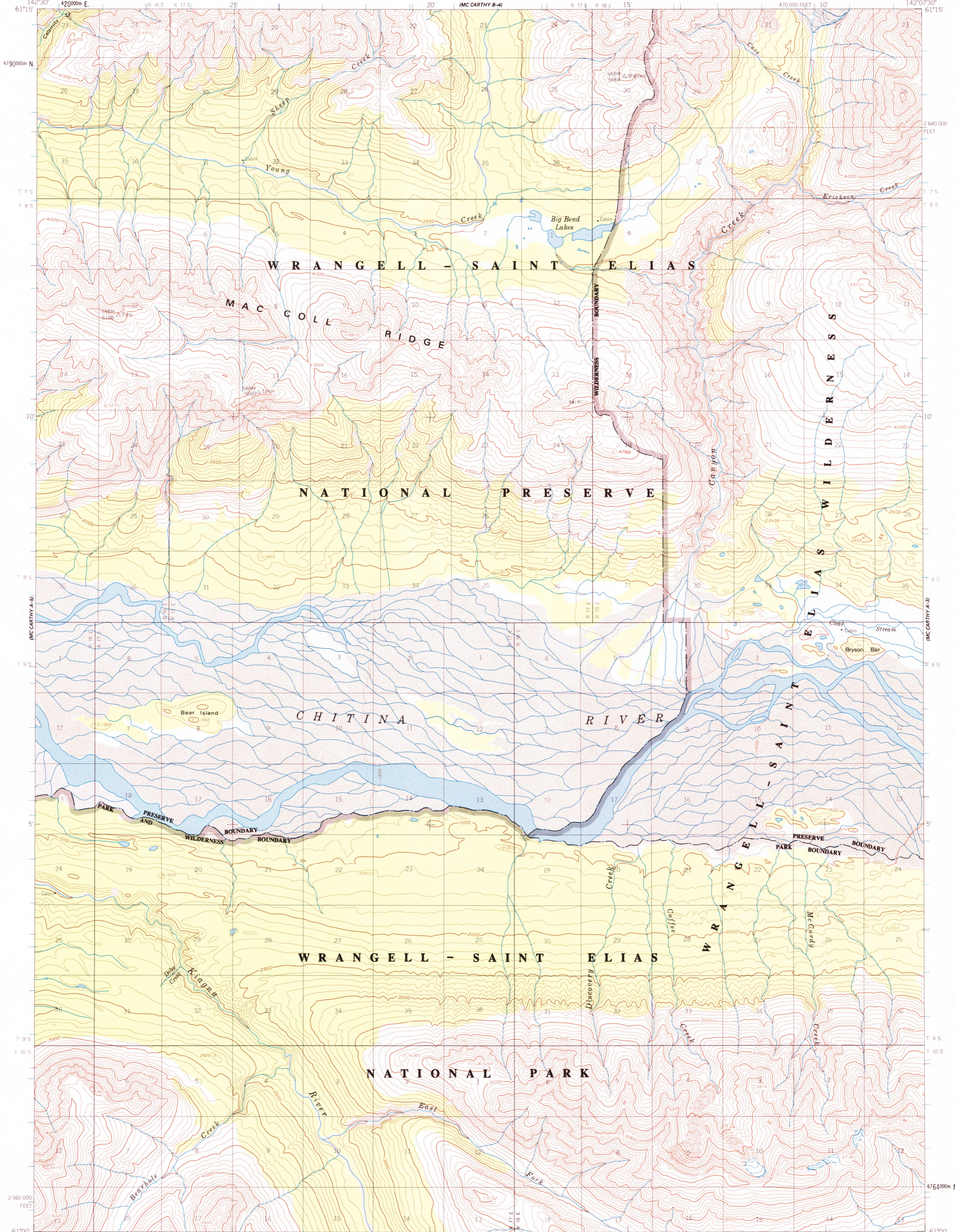


MC CARTHY (A-3)

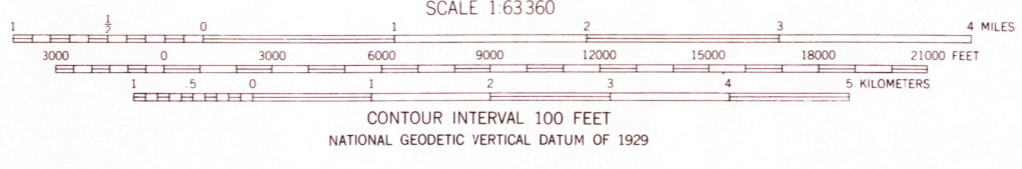
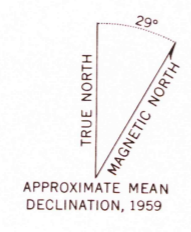
UNITED STATES
DEPARTMENT OF THE INTERIOR
GEOLOGICAL SURVEY

MC CARTHY (A-4) QUADRANGLE
ALASKA
1:63 360 SERIES (TOPOGRAPHIC)

MC CARTHY (B-3)



Mapped, edited, and published by the Geological Survey
Control by NOS/NOAA and International Boundary Commission
Topography by photogrammetric methods from aerial photographs
taken 1957, field annotated 1959. Map not field checked
Projection and 1000-meter grid ticks shown in blue:
Universal Transverse Mercator, zone 7
10,000-foot grid ticks based on Alaska coordinate
system, zone 2, 1927 North American Datum
To place on the predicted North American Datum 1983 move
the projection lines 48 meters north and 109 meters east
Land lines represent unsurveyed and unmarked locations
predetermined by the Bureau of Land Management
Folios CR-6 and CR-7, Copper River Meridian
Swamps, as portrayed, indicate only the wetter areas,
usually of low relief, as interpreted from aerial photographs
Federal reservation boundaries established by The Alaska National
Interest Lands Conservation Act, PL 96-487, Dec. 2, 1980, are
shown as compiled by the administering agencies
There may be private inholdings within the boundaries of the
National or State reservations shown on this map



FOR SALE BY U.S. GEOLOGICAL SURVEY
FAIRBANKS, ALASKA 99701, DENVER, COLORADO 80225, OR RESTON, VIRGINIA 22092
A FOLDER DESCRIBING TOPOGRAPHIC MAPS AND SYMBOLS IS AVAILABLE ON REQUEST

ROAD CLASSIFICATION
No roads or trails in this area

MC CARTHY (A-4), ALASKA
61142-A2-TF-063
1959

MINOR REVISION 1985

USGS NMD HISTORICAL MAP ARCHIVES

MC CARTHY A-4
ISBN # 0607025727 AK 063
TF

