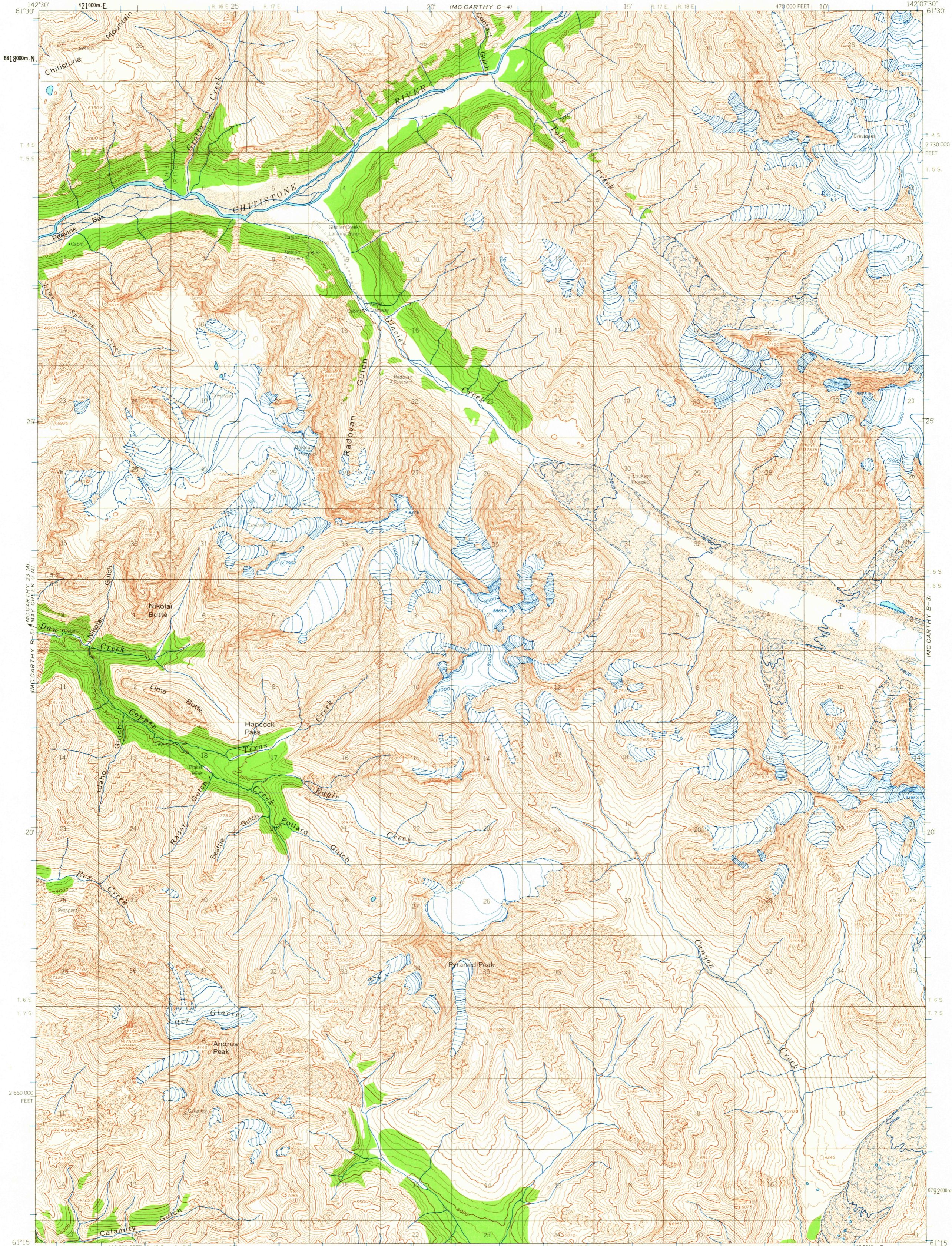
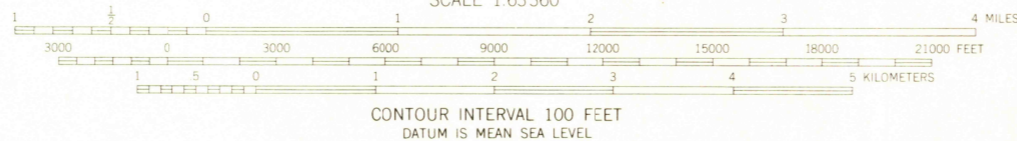


UNITED STATES  
DEPARTMENT OF THE INTERIOR  
GEOLOGICAL SURVEY

MC CARTHY (B-4) QUADRANGLE  
ALASKA  
1:63 360 SERIES (TOPOGRAPHIC)



Mapped, edited, and published by the Geological Survey  
Control by USGS and USC&GS, and International Boundary Commission  
Topography by photogrammetric methods from aerial photographs  
taken 1957, field annotated 1959. Map not field checked  
Universal Transverse Mercator projection, 1927 North American datum  
10,000-foot grid based on Alaska coordinate system, zone 2  
1000-meter Universal Transverse Mercator grid ticks,  
zone 7, shown in blue  
Land lines represent unsurveyed and unmarked locations  
predetermined by the Bureau of Land Management  
Folios CR-6, and CR-7, Copper River Meridian



ROAD CLASSIFICATION  
Unimproved dirt

MC CARTHY (B-4), ALASKA  
N6115-W14207.5/15X22.5

1959

JUL 17 1964

U.S. GEOLOGICAL SURVEY  
FILE COPY  
TOPOGRAPHIC DIVISION  
Historical File  
Topographic Division