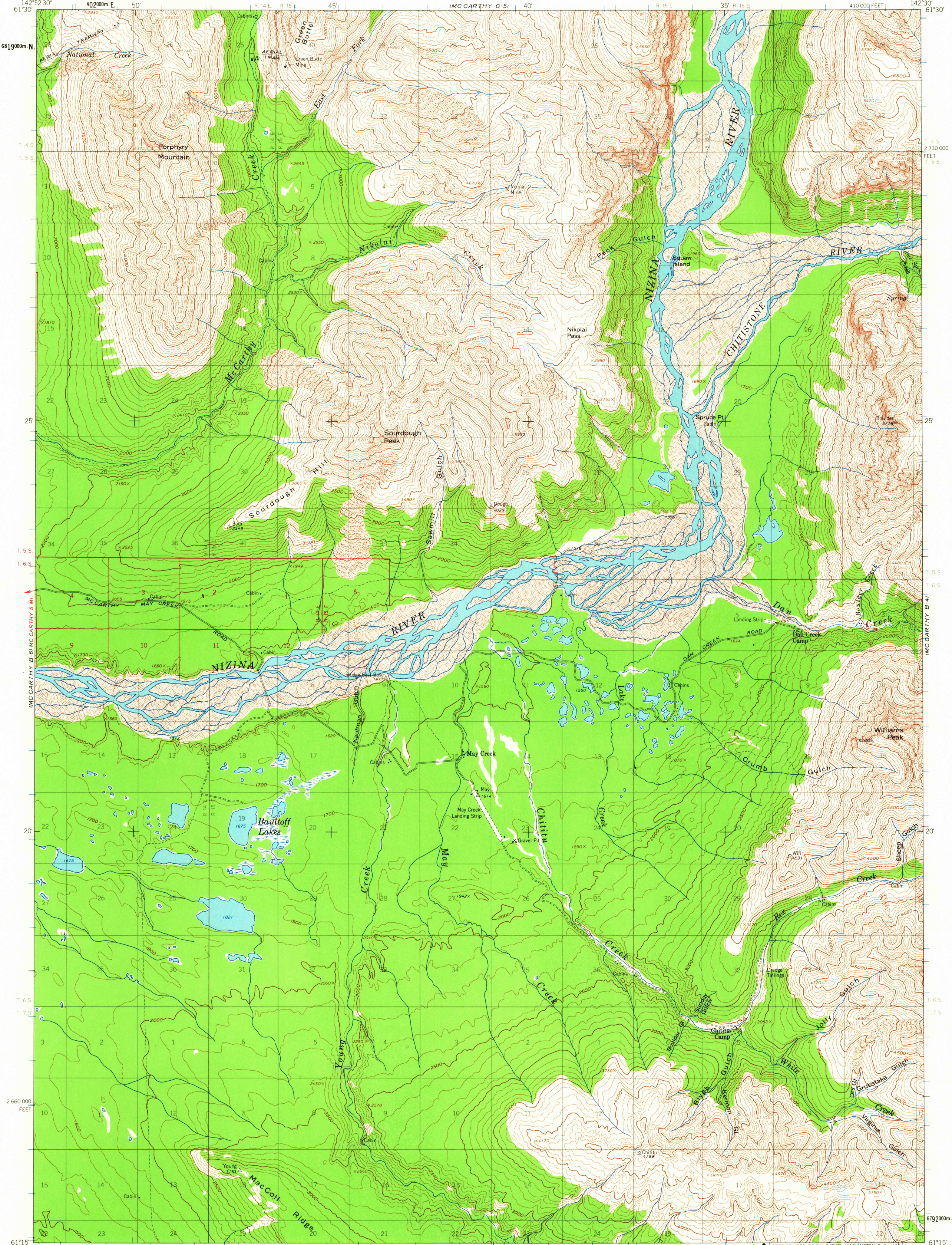
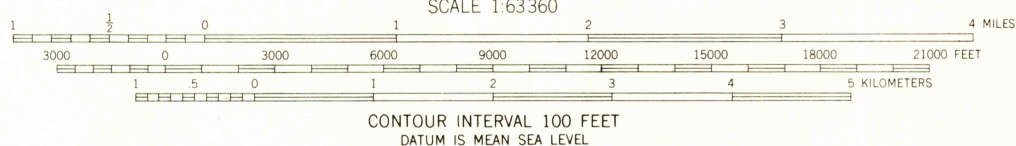
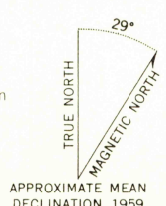


UNITED STATES  
DEPARTMENT OF THE INTERIOR  
GEOLOGICAL SURVEY

MC CARTHY (B-5) QUADRANGLE  
ALASKA  
1:63 360 SERIES (TOPOGRAPHIC)



Mapped, edited, and published by the Geological Survey  
Control by USGS, USC&GS, and International Boundary Commission  
Topography by photogrammetric methods from aerial photographs  
taken 1957, field annotated 1959. Map not field checked  
Universal Transverse Mercator projection, 1927 North American datum  
10,000-foot grid based on Alaska coordinate system, zone 2  
1000 meter Universal Transverse Mercator grid ticks,  
zone 7, shown in blue  
Gray land lines represent unsurveyed and unmarked locations  
predetermined by the Bureau of Land Management  
Folio CR-6, Copper River Meridian



ROAD CLASSIFICATION  
Light-duty Unimproved dirt

USGS  
Historical File  
Topographic Division

MC CARTHY (B-5), ALASKA  
N6115-W14230/15X22.5

1959

FOR SALE BY U.S. GEOLOGICAL SURVEY  
FAIRBANKS, ALASKA DENVER 25, COLORADO WASHINGTON 25, D. C.  
A FOLDER DESCRIBING TOPOGRAPHIC MAPS AND SYMBOLS IS AVAILABLE ON REQUEST

JUL 17 1964

2205  
U.S.G.S.  
COPY  
TOPOGRAPHIC DIVISION