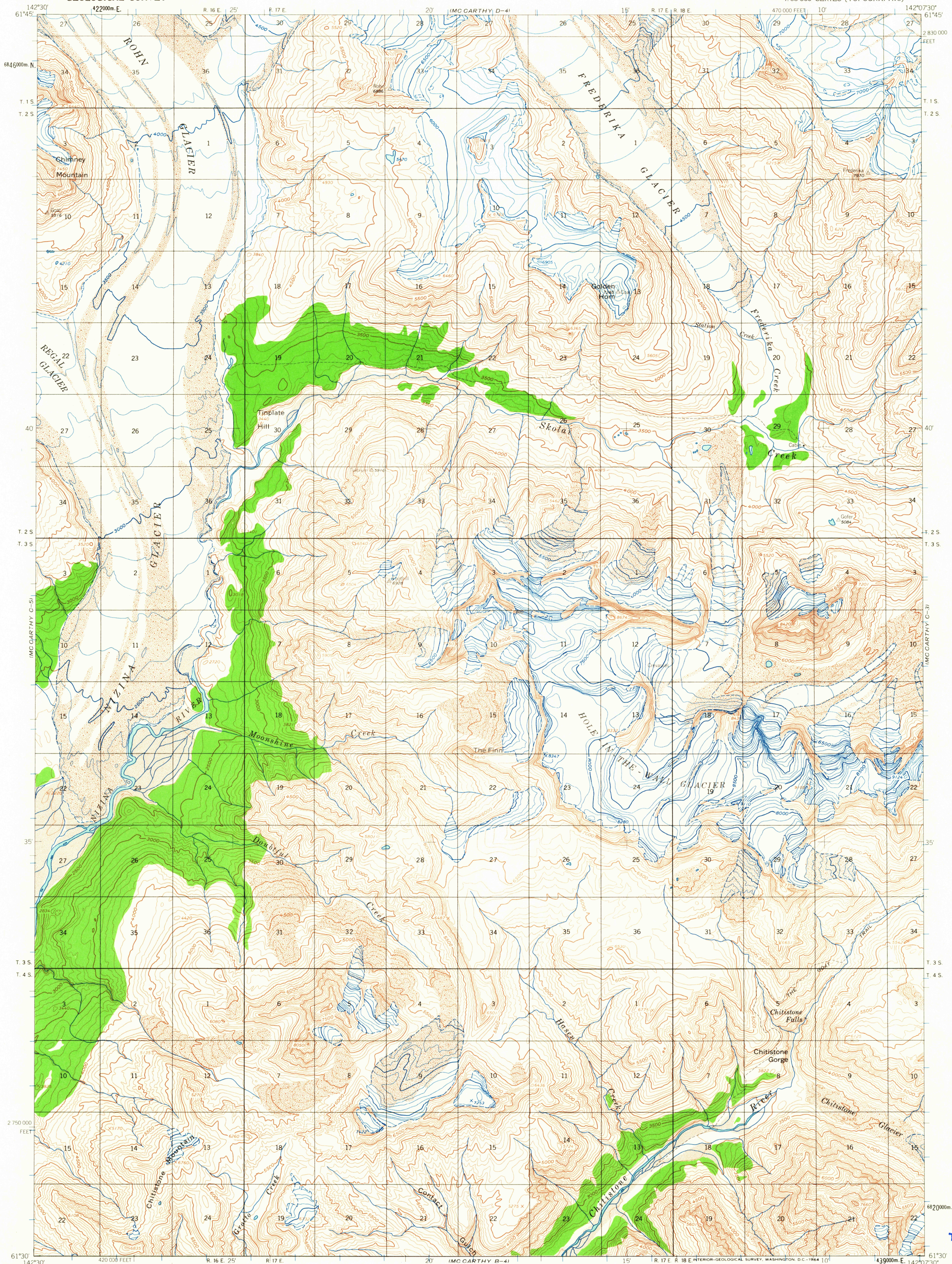


UNITED STATES
DEPARTMENT OF THE INTERIOR
GEOLOGICAL SURVEY

MC CARTHY (C-4) QUADRANGLE
ALASKA
1:63 360 SERIES (TOPOGRAPHIC)

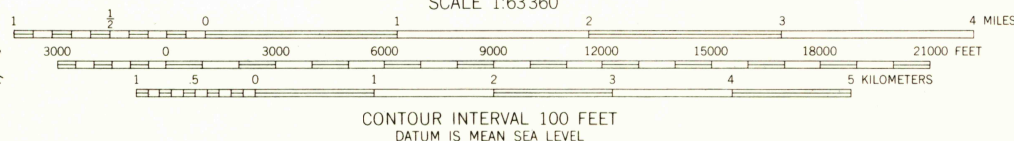
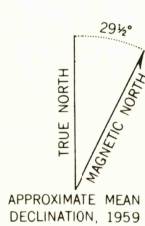


Mapped, edited, and published by the Geological Survey

Control by USGS and USC&GS

Topography by photogrammetric methods from aerial photographs taken 1957, field annotated 1959. Map not field checked
Universal Transverse Mercator projection, 1927 North American datum
10,000-foot grid based on Alaska coordinate system, zone 2
1000-meter Universal Transverse Mercator grid ticks, zone 7, shown in blue

Land lines represent unsurveyed and unmarked locations predetermined by the Bureau of Land Management
Folio CR 6 Copper River Meridian



ROAD CLASSIFICATION
Trails

FOR SALE BY U.S. GEOLOGICAL SURVEY
FAIRBANKS, ALASKA DENVER 25, COLORADO WASHINGTON 25, D. C.
A FOLDER DESCRIBING TOPOGRAPHIC MAPS AND SYMBOLS IS AVAILABLE ON REQUEST

U.S. GEOLOGICAL SURVEY
QUADRANGLE LOCATION
FILE COPY
TOPOGRAPHIC DIVISION

MC CARTHY (C-4), ALASKA
N6130-W14207.5/15X22.5
1959

USGS
Historical File
Topographic Division

2580

APR 20 1964