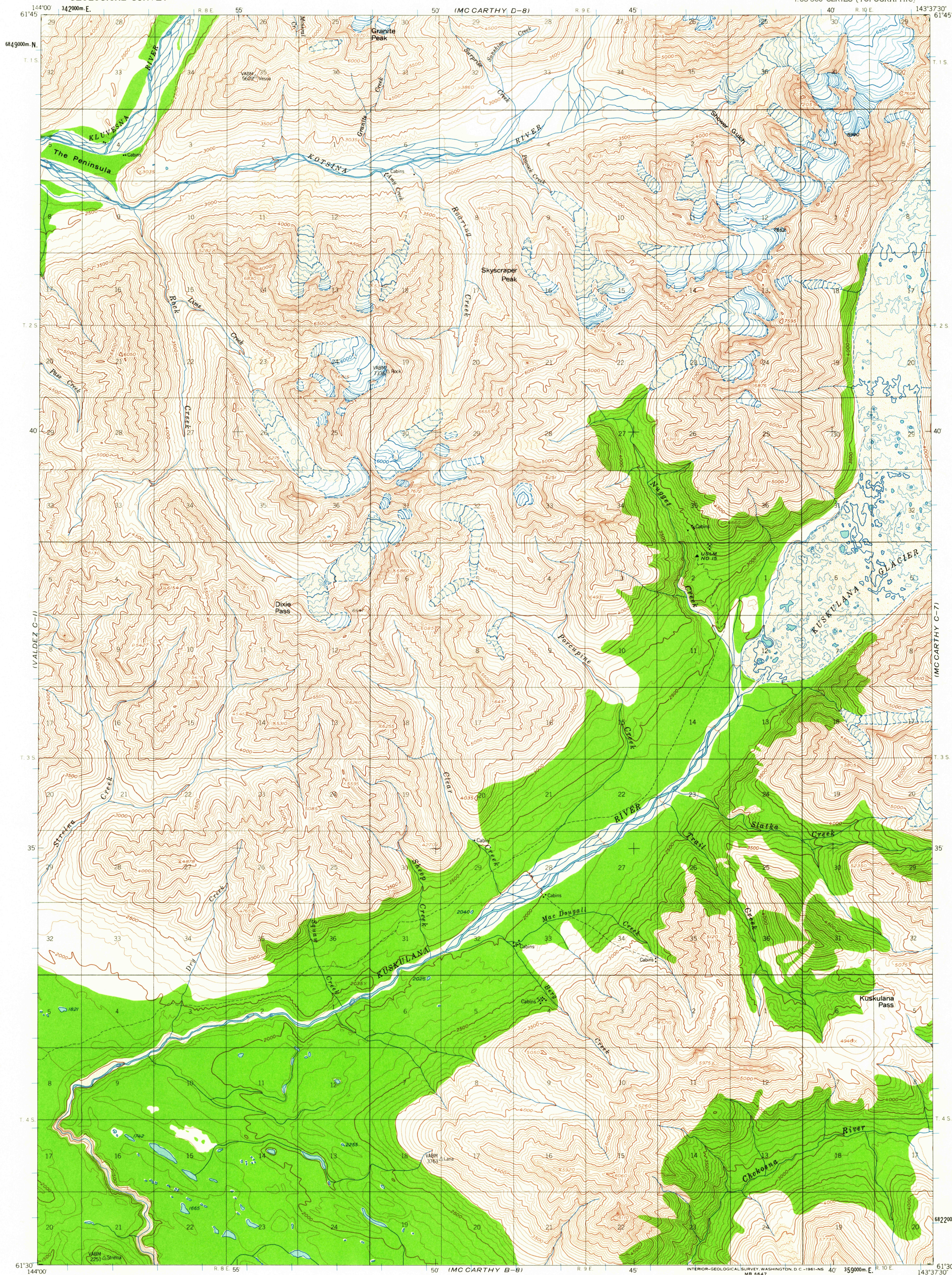


VALDEZ D-11

UNITED STATES
DEPARTMENT OF THE INTERIOR
GEOLOGICAL SURVEY

MC CARTHY (C-8) QUADRANGLE

ALASKA
1:63 360 SERIES (TOPOGRAPHIC)



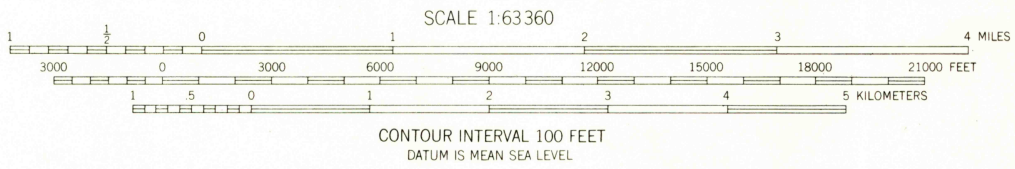
U.S.G.S.
FILE COPY
TOPOGRAPHIC DIVISION

JUL 21 1961

VALDEZ B-11

Mapped, edited, and published by the Geological Survey
Control by USGS and USC&GS
Topography from aerial photographs by photogrammetric methods 1956 and 1959. Aerial photographs taken 1950 and 1957, field annotated 1951. Map not field checked
Universal Transverse Mercator projection
1927 North American datum
1000 meter Universal Transverse Mercator grid ticks, zone 7, shown in blue
Land lines printed in gray represent unsurveyed and unmarked locations predetermined by the Bureau of Land Management. Folio CR-6, Copper River Meridian

TRUE NORTH
MAGNETIC NORTH
APPROXIMATE MEAN DECLINATION, 1951



USGS
Historical File
Topographic Division

MC CARTHY (C-8), ALASKA
N6130-W14337.5/15X22.5

1951

FOR SALE BY U.S. GEOLOGICAL SURVEY
FAIRBANKS, ALASKA DENVER 25, COLORADO WASHINGTON 25, D.C.
A FOLDER DESCRIBING TOPOGRAPHIC MAPS AND SYMBOLS IS AVAILABLE ON REQUEST

2485