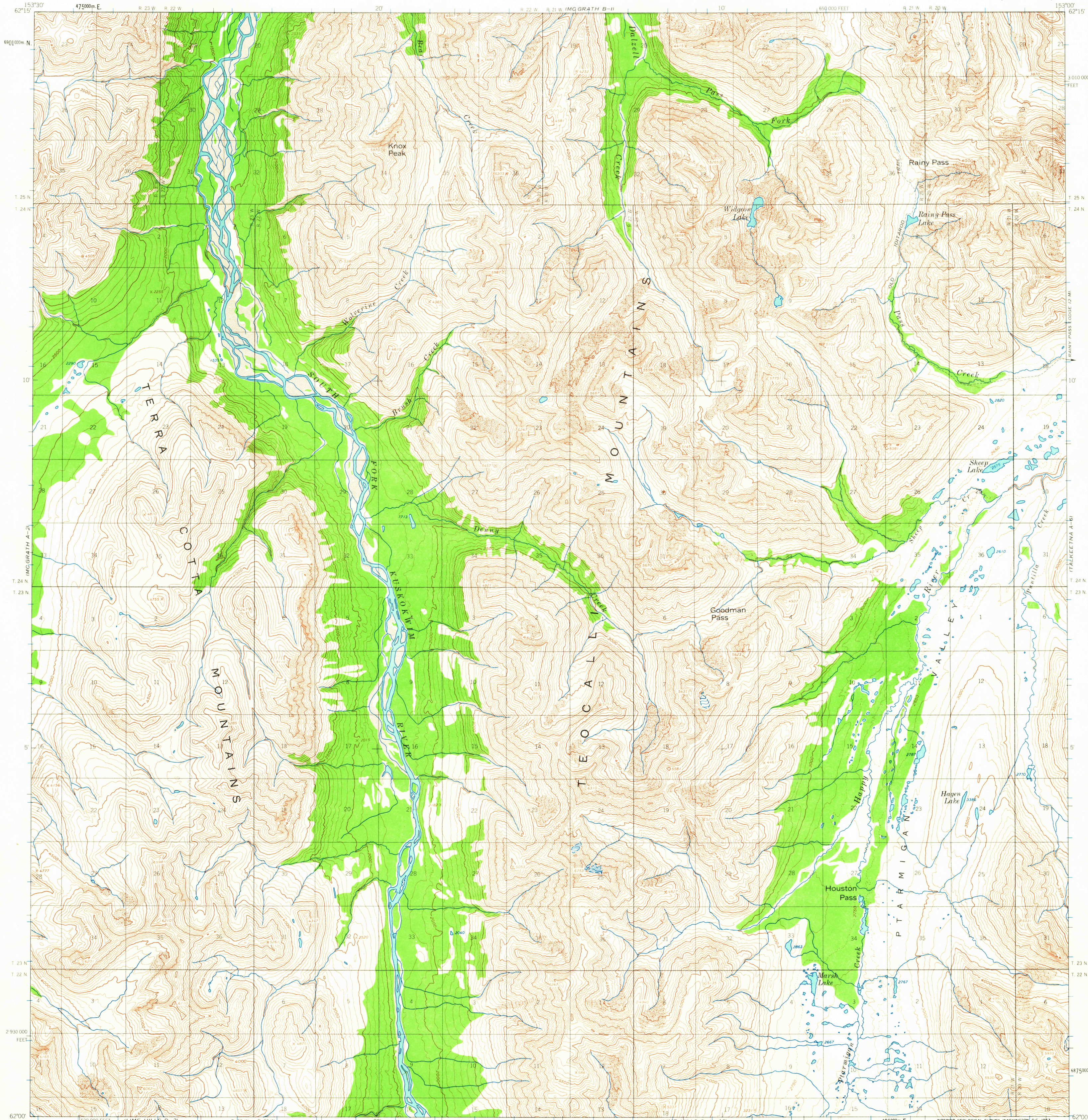


UNITED STATES  
DEPARTMENT OF THE INTERIOR  
GEOLOGICAL SURVEY

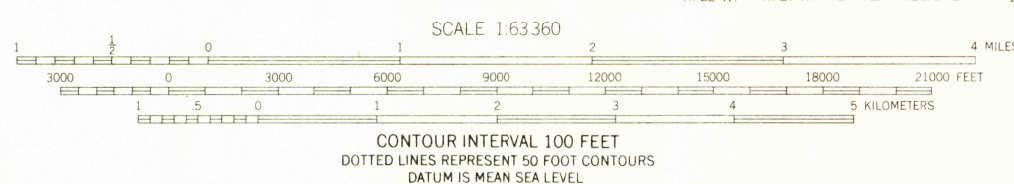
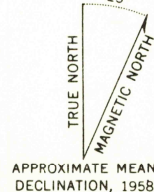
MC GRATH (A-1) QUADRANGLE  
ALASKA  
1:63 360 SERIES (TOPOGRAPHIC)



Mapped, edited, and published by the Geological Survey  
Control by USGS and USC&GS

Topography by photogrammetric methods from aerial photographs  
taken 1957, field annotated 1958. Map not field checked  
Universal Transverse Mercator projection, 1927 North American datum  
10,000-foot grid based on Alaska coordinate system, zone 5  
1000-meter Universal Transverse Mercator grid ticks,  
zone 5, shown in blue

Land lines represent unsurveyed and unmarked locations  
predetermined by the Bureau of Land Management  
Folio S-3, Seward Meridian



FOR SALE BY U.S. GEOLOGICAL SURVEY  
FAIRBANKS, ALASKA DENVER 25, COLORADO WASHINGTON 25, D.C.  
A FOLDER DESCRIBING TOPOGRAPHIC MAPS AND SYMBOLS IS AVAILABLE ON REQUEST

USGS  
Historical File  
Topographic Division

ROAD CLASSIFICATION  
Trails

MC GRATH (A-1), ALASKA  
N6200-W15300/15X30  
1958

DEC - 6 1963