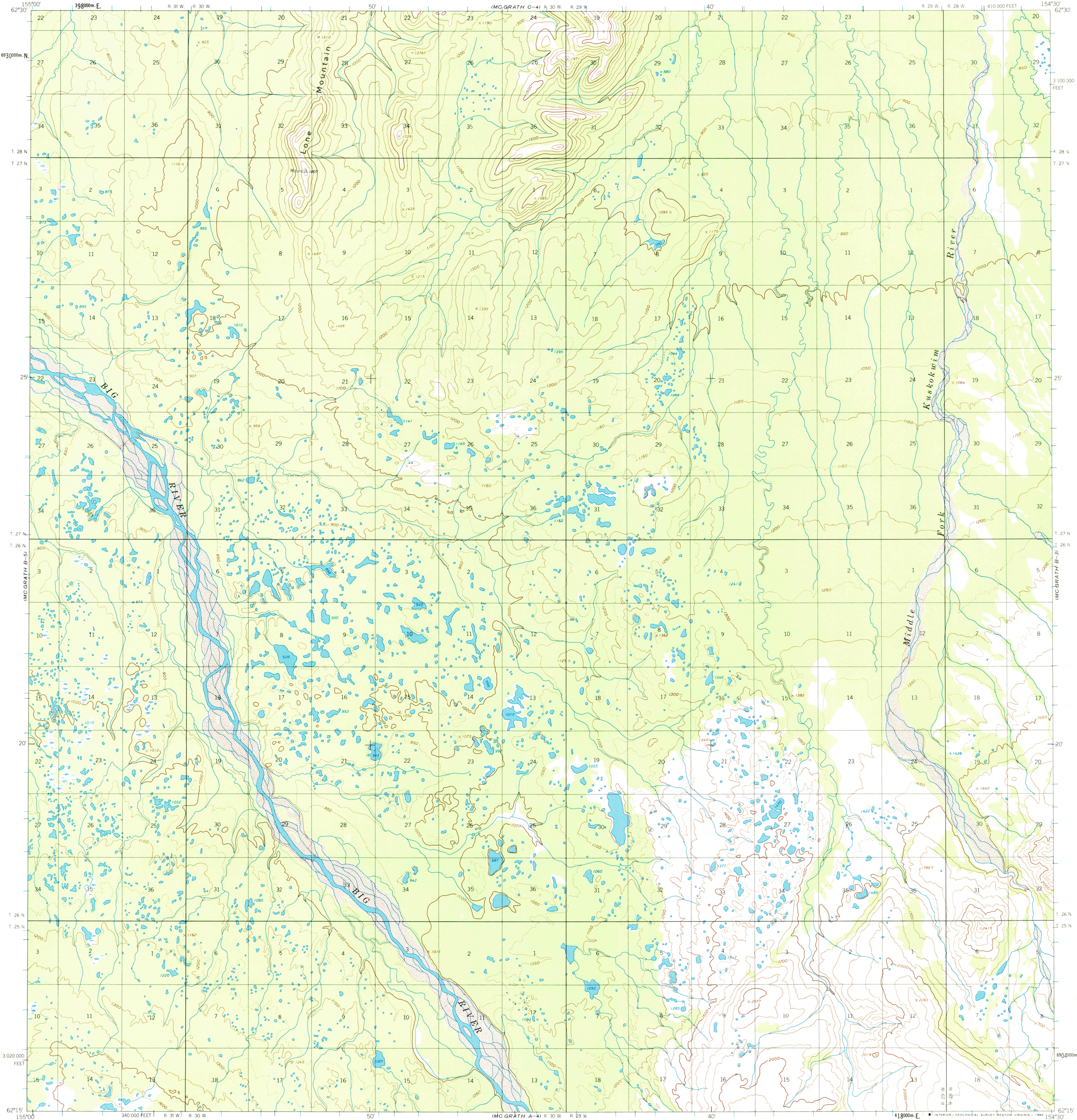


UNITED STATES  
DEPARTMENT OF THE INTERIOR  
GEOLOGICAL SURVEY

MC GRATH (B-4) QUADRANGLE  
ALASKA  
1:63 360 SERIES (TOPOGRAPHIC)



Mapped, edited, and published by the Geological Survey

Control by USCE

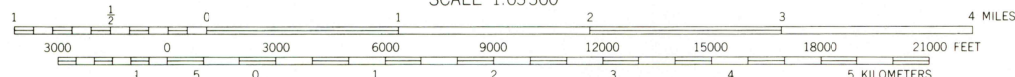
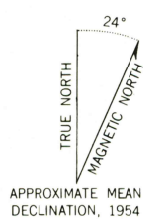
Topography by photogrammetric methods from aerial photographs taken 1953, field annotated 1954. Map not field checked.

Universal Transverse Mercator projection, 1927 North American Datum 10000-foot grid based on Alaska coordinate system, zone 5 1000-meter Universal Transverse Mercator grid ticks, zone 5, shown in blue

Land lines represent unsurveyed and unmarked locations predetermined by the Bureau of Land Management Folio S.3, Seward Meridian

Swamps, as portrayed indicate only the wetter areas, usually of low relief, as interpreted from aerial photographs

To place on the predicted North American Datum 1983 move the projection lines 72 meters north and 125 meters east



NATIONAL GEODETIC VERTICAL DATUM OF 1929

FOR SALE BY U. S. GEOLOGICAL SURVEY  
FAIRBANKS, ALASKA 99701, DENVER, COLORADO 80225, OR RESTON, VIRGINIA 22092  
A FOLDER DESCRIBING TOPOGRAPHIC MAPS AND SYMBOLS IS AVAILABLE ON REQUEST



ROAD CLASSIFICATION  
No roads or trails in this area

MC GRATH (B-4), ALASKA  
N6215-W15430/15X30

1954

MC GRATH B-4  
ISBN # 0607026111 AK 063  
TF



RETURN TO:  
USGS WPD HISTORICAL MAP ARCHIVES