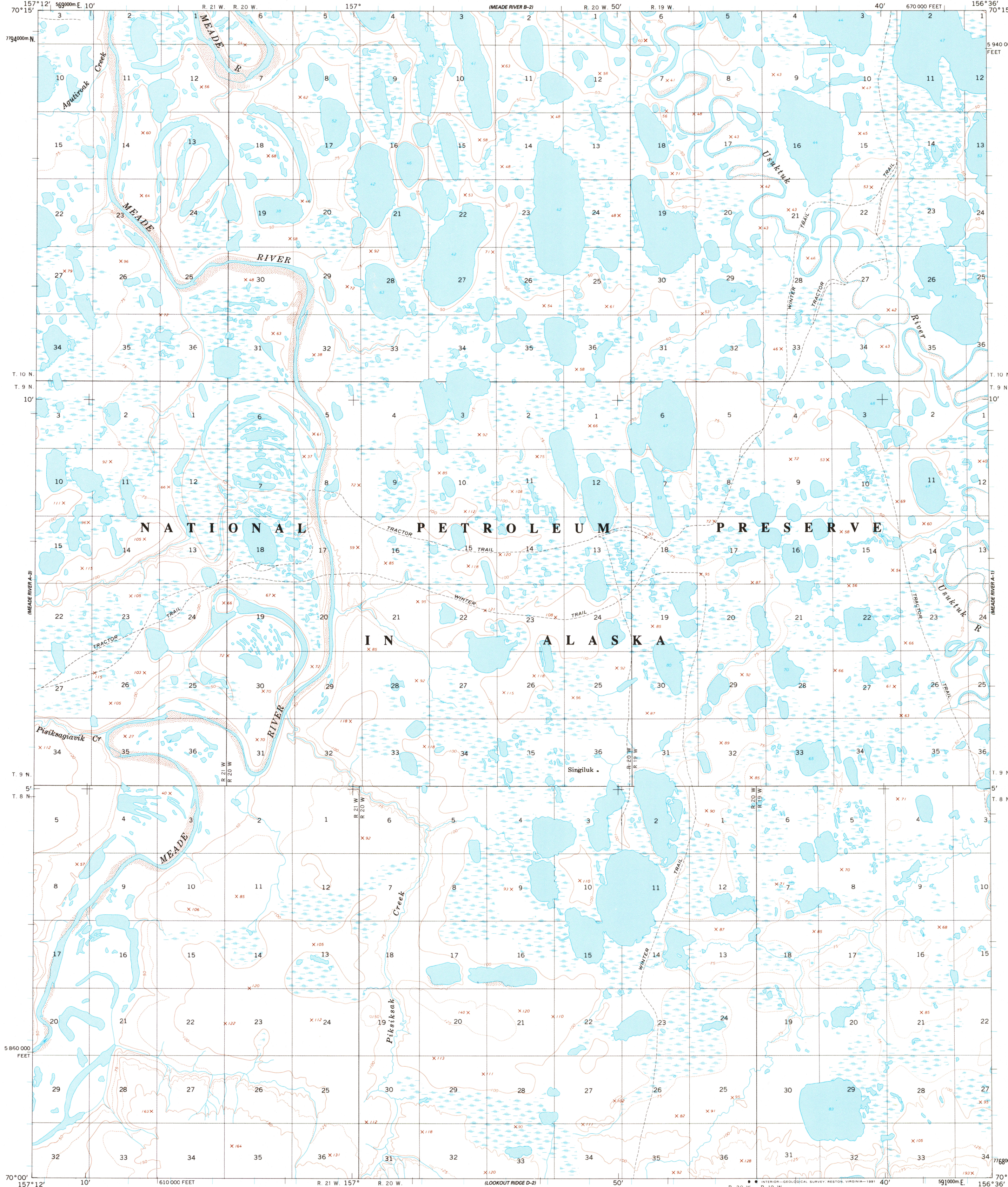


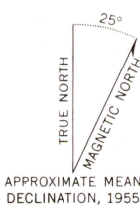
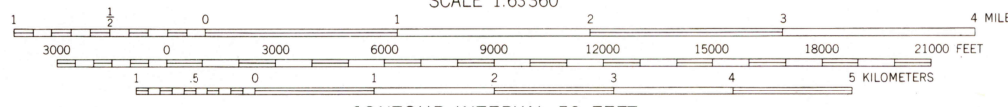
UNITED STATES
DEPARTMENT OF THE INTERIOR
GEOLOGICAL SURVEY

MEADE RIVER (A-2) QUADRANGLE
ALASKA—NORTH SLOPE BOROUGH
1:63 360 SERIES (TOPOGRAPHIC)



Mapped by the Defense Mapping Agency
Edited and published by the Geological Survey
Control by NOS/NOAA and USCE
Topography by photogrammetric methods from aerial photographs
taken 1955, field annotated 1955. Map not field checked
Projection and 1000-meter grid ticks shown in blue:
Universal Transverse Mercator, zone 4
10,000-foot grid ticks based on Alaska coordinate
system, zone 6. 1927 North American Datum
The difference between 1927 North American Datum and North
American Datum of 1983 (NAD 83) for 7.5 minute intersections
is given in USGS Bulletin 1875
Land lines represent unsurveyed and unmarked location
predetermined by the Bureau of Land Management
Folio U-5, Umat Meridian
Lake elevations are unchecked
Swamps, as portrayed, indicate only the wetter areas,
usually of low relief, as interpreted from aerial photographs
Federal reservation boundaries established by The Alaska National
Interest Lands Conservation Act, PL 96-487, Dec. 2, 1980, are
shown as compiled by the administering agencies

There may be private inholdings within the boundaries of
the National or State reservations shown on this map



FOR SALE BY U. S. GEOLOGICAL SURVEY
FAIRBANKS, ALASKA 99701, DENVER, COLORADO 80225, OR RESTON, VIRGINIA 22092
A FOLDER DESCRIBING TOPOGRAPHIC MAPS AND SYMBOLS IS AVAILABLE ON REQUEST

ROAD CLASSIFICATION
Trails

MEADE RIVER (A-2), ALASKA

70156 A5-TF-063
1955
MINOR REVISIONS 1981

