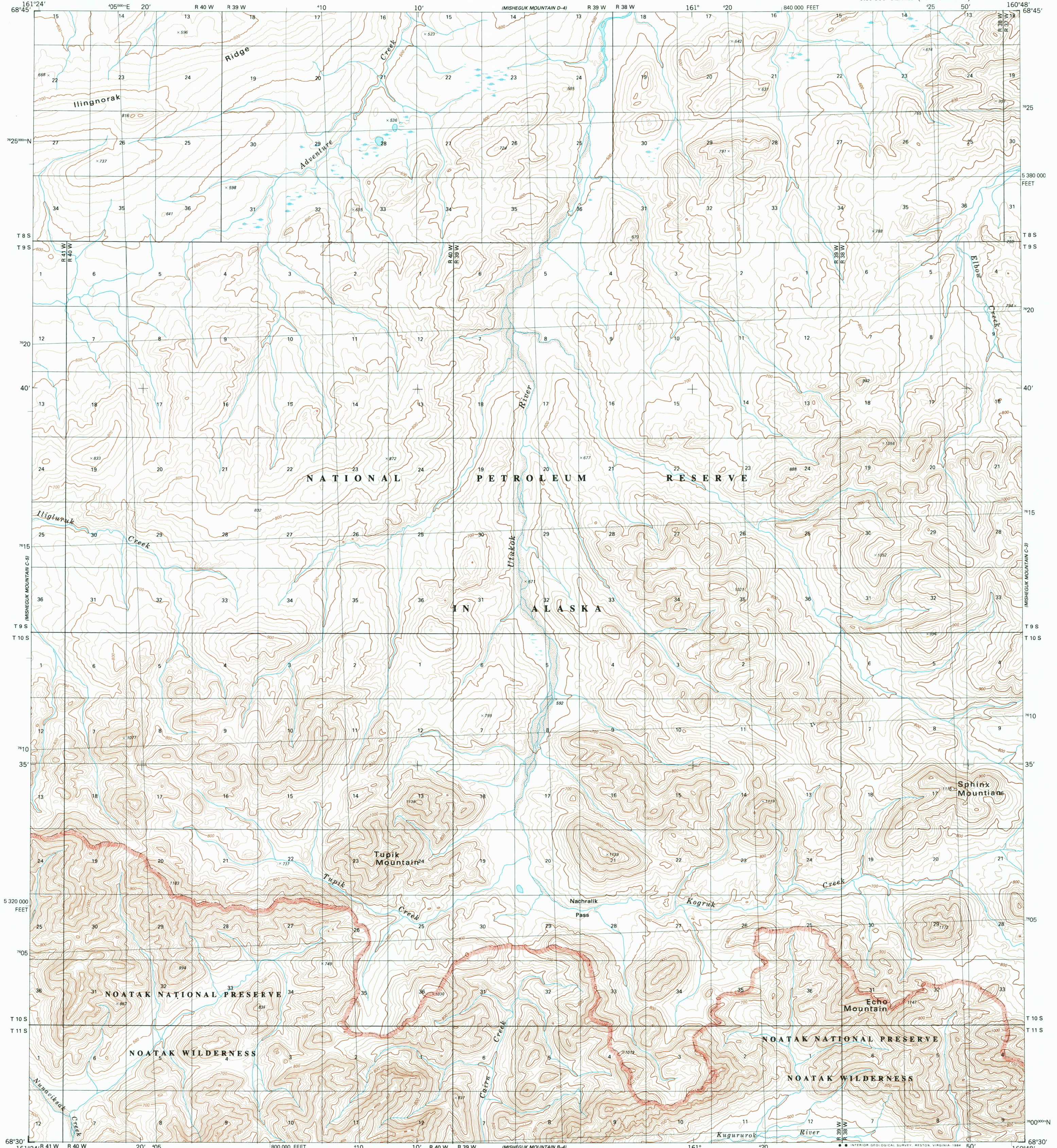
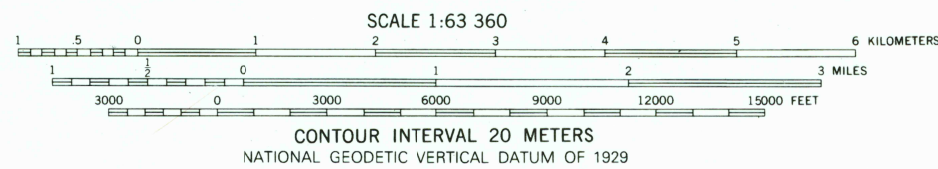
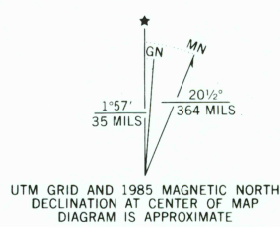


UNITED STATES
DEPARTMENT OF THE INTERIOR
GEOLOGICAL SURVEY

MISHEGUK MOUNTAIN (C-4) QUADRANGLE
ALASKA-NORTH SLOPE BOROUGH
1:63 360 SERIES (TOPOGRAPHIC)



Mapped, edited, and published by the Geological Survey
Control by USGS and NOS/NOAA
Topography by photogrammetric methods from aerial photographs
taken 1973. Map not field checked
Map edited 1984
Projection and 5000-meter grid
Universal Transverse Mercator, zone 4
20,000-foot grid ticks based on Alaska coordinate
system, zone 7, 1927 North American Datum
To place on the predicted North American Datum 1983 move
the projection lines 68 meters north and 127 meters east
Land lines represent unsurveyed and unmarked locations
predetermined by the Bureau of Land Management
Folio U-8, Umiat Meridian
Swamps, as portrayed, indicate only the wetter areas,
usually of low relief, as interpreted from aerial photographs
Federal reservation boundaries established by The Alaska National
Interest Lands Conservation Act, PL 96-487, Dec. 2, 1980, are
shown as compiled by the administering agencies
There may be private inholdings within the boundaries of
the National or State reservations shown on this map



FOR SALE BY U.S. GEOLOGICAL SURVEY
FAIRBANKS, ALASKA 99701, DENVER, COLORADO 80225, OR RESTON, VIRGINIA 22092
A FOLDER DESCRIBING TOPOGRAPHIC MAPS AND SYMBOLS IS AVAILABLE ON REQUEST

CONTOURS AND ELEVATIONS IN METERS



QUADRANGLE LOCATION

ROAD CLASSIFICATION
No roads or trails in this area

MISHEGUK MOUNTAIN (C-4), ALASKA
N6830-W16048/15X36

1984