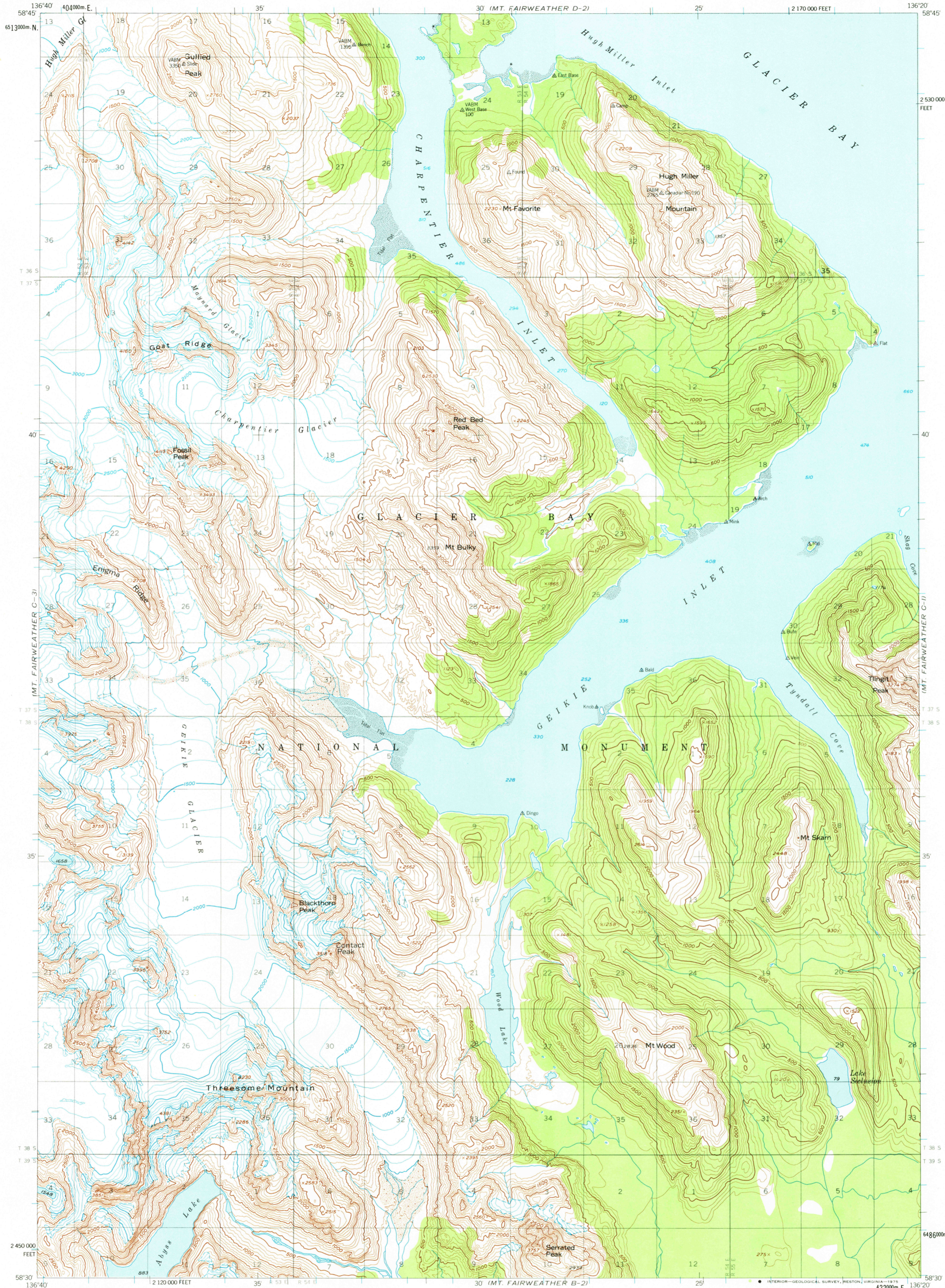
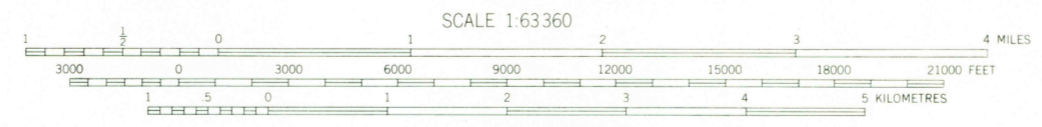
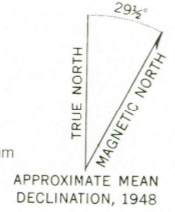


UNITED STATES  
DEPARTMENT OF THE INTERIOR  
GEOLOGICAL SURVEY

MT. FAIRWEATHER (C-2) QUADRANGLE  
ALASKA  
1:63 360 SERIES (TOPOGRAPHIC)



Mapped, edited, and published by the Geological Survey  
Control by USGS, NOS/NOAA, and IBC  
Topography by photogrammetric methods from aerial photographs  
taken 1948. Map not field checked  
Selected hydrographic data compiled from NOS/NOAA Charts  
8202 (1:209 375 scale) and 8306 (1:160 000 scale)  
This information is not intended for navigational purposes  
Universal Transverse Mercator projection, 1927 North American datum  
10,000-foot grid based on Alaska coordinate system, zone 1  
1000-metre Universal Transverse Mercator grid ticks,  
zone 8, shown in blue  
Land lines represent unsurveyed and unmarked locations  
predetermined by the Bureau of Land Management  
Folios CR-11 and CR-12, Copper River Meridian  
Lake elevations are unchecked



CONTOUR INTERVAL 100 FEET  
NATIONAL GEODETIC VERTICAL DATUM OF 1929  
SOUNDINGS IN FEET-DATUM IS MEAN LOWER LOW WATER  
SHORELINE SHOWN REPRESENTS THE APPROXIMATE LINE OF MEAN HIGH WATER  
THE AVERAGE RANGE OF TIDE IS APPROXIMATELY 14 FEET



ROAD CLASSIFICATION  
No roads or trails in this area

MT. FAIRWEATHER (C-2), ALASKA  
N5830—W13620/15X20

1948  
MINOR REVISIONS 1973

FOR SALE BY U.S. GEOLOGICAL SURVEY  
FAIRBANKS, ALASKA 99701, DENVER, COLORADO 80225, OR RESTON, VIRGINIA 22092  
A FOLDER DESCRIBING TOPOGRAPHIC MAPS AND SYMBOLS IS AVAILABLE ON REQUEST

USGS  
HISTORICAL FILE  
TOPOGRAPHIC DIVISION

DEC 18 1975