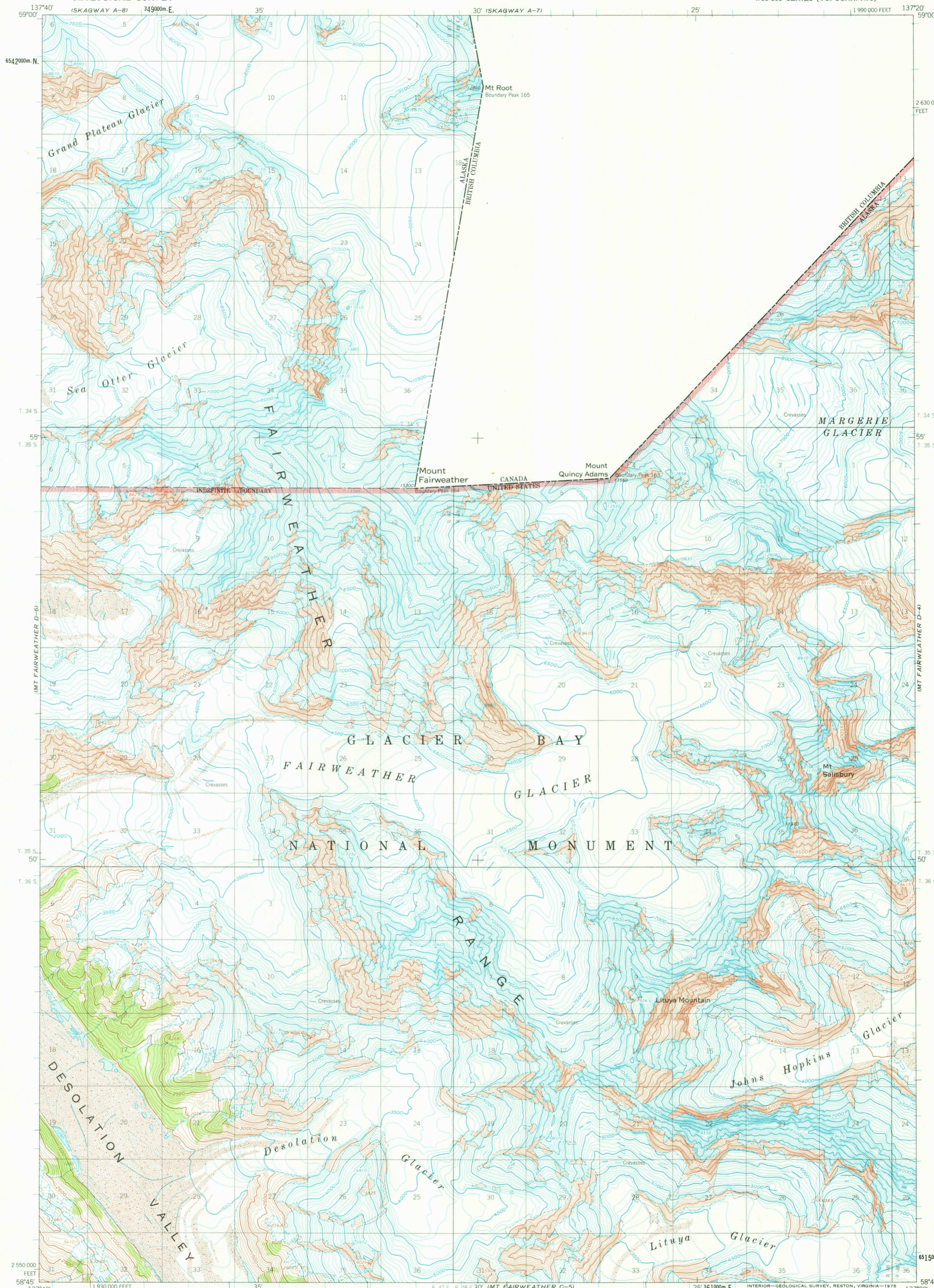
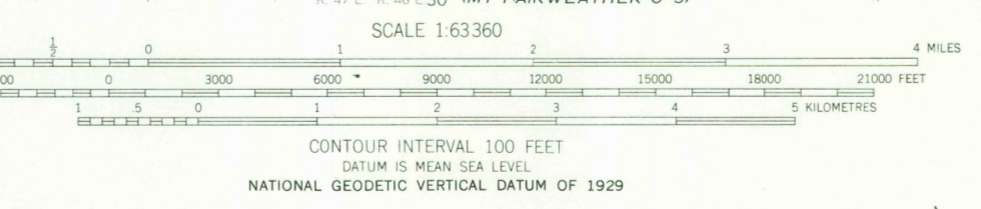
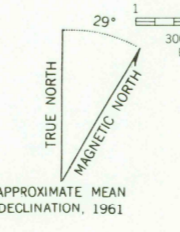


UNITED STATES
DEPARTMENT OF THE INTERIOR
GEOLOGICAL SURVEY

MT. FAIRWEATHER (D-5) QUADRANGLE
ALASKA
1:63 360 SERIES (TOPOGRAPHIC)



Mapped, edited, and published by the Geological Survey
Control by USGS, USC&GS, and International Boundary Commission
Topography by photogrammetric methods from aerial photographs
taken 1948 and 1961, field annotated 1961. Map not field checked
Universal Transverse Mercator projection, 1927 North American datum
10,000-foot grid based on Alaska coordinate system, zone 1
1000-metre Universal Transverse Mercator grid ticks,
zone 8, shown in blue
Land lines represent unsurveyed and unmarked locations
predetermined by the Bureau of Land Management, Folio CR-8,
and from computations by the State of Alaska, Division of Lands
Copper River Meridian



ROAD CLASSIFICATION
No roads or trails in this area



MT. FAIRWEATHER (D-5), ALASKA
N5845-W13720/15X20

1961

FOR SALE BY U. S. GEOLOGICAL SURVEY
FAIRBANKS, ALASKA 99701, DENVER, COLORADO 80225, OR RESTON, VIRGINIA 22092
A FOLDER DESCRIBING TOPOGRAPHIC MAPS AND SYMBOLS IS AVAILABLE ON REQUEST

USGS
HISTORICAL FILE
TOPOGRAPHIC DIVISION

2670