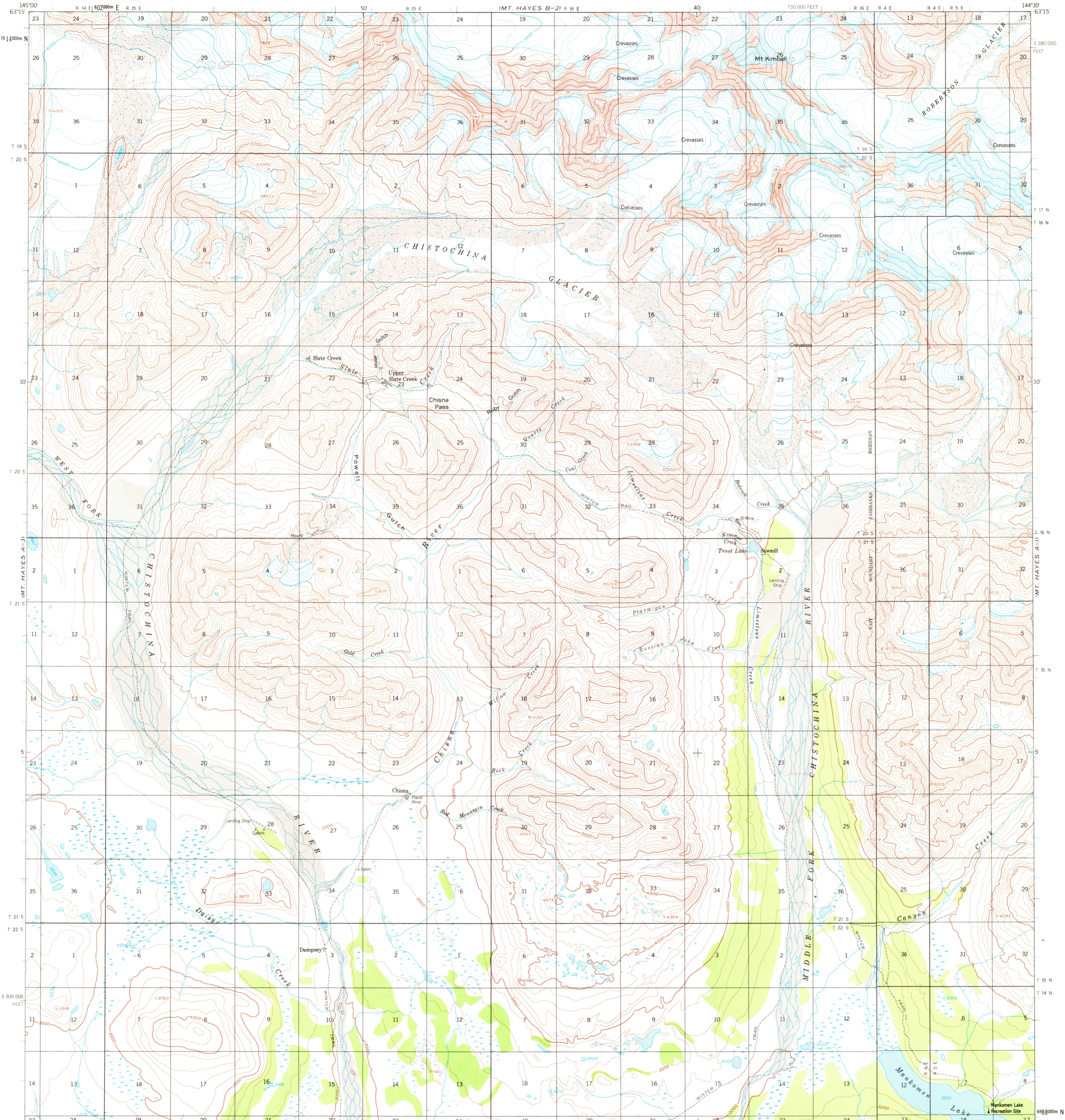
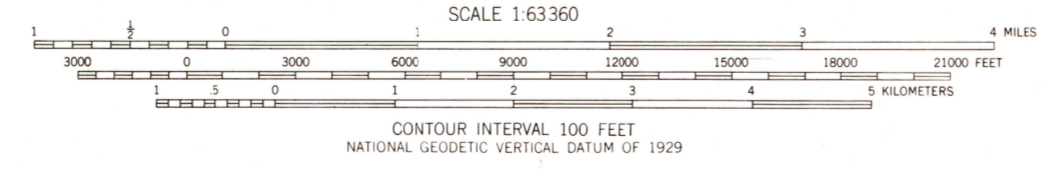
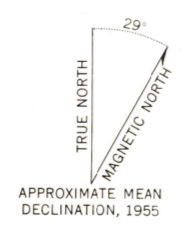


UNITED STATES
DEPARTMENT OF THE INTERIOR
GEOLOGICAL SURVEY

MT. HAYES (A-2) QUADRANGLE
ALASKA
1:63 360 SERIES (TOPOGRAPHIC)



Mapped, edited, and published by the Geological Survey
Control by USGS and USC&GS
Topography by photogrammetric methods
from aerial photographs taken 1954,
field annotated 1955. Map not field checked
Universal Transverse Mercator projection, 1927 North American datum
10,000-foot grid ticks based on Alaska coordinate system, zone 3
1000-meter Universal Transverse Mercator grid ticks,
zone 6, shown in blue
Land lines represent unsurveyed and unmarked locations
predetermined by the Bureau of Land Management.
Folios F-9, Fairbanks Meridian, CR-1 and
CR-3, Copper River Meridian
Swamps, as portrayed, indicate only the wetter areas,
usually of low relief, as interpreted from aerial photographs



FOR SALE BY U. S. GEOLOGICAL SURVEY
FAIRBANKS, ALASKA 99701, DENVER, COLORADO 80225, OR RESTON, VIRGINIA 22092
A FOLDER DESCRIBING TOPOGRAPHIC MAPS AND SYMBOLS IS AVAILABLE ON REQUEST

MT. HAYES (A-2), ALASKA
N6300-W14430/15X30
1955
MINOR REVISIONS 1975

USGS
Historical File
Topographic Division

FEB 23 1978
3350

ROAD CLASSIFICATION
Trails