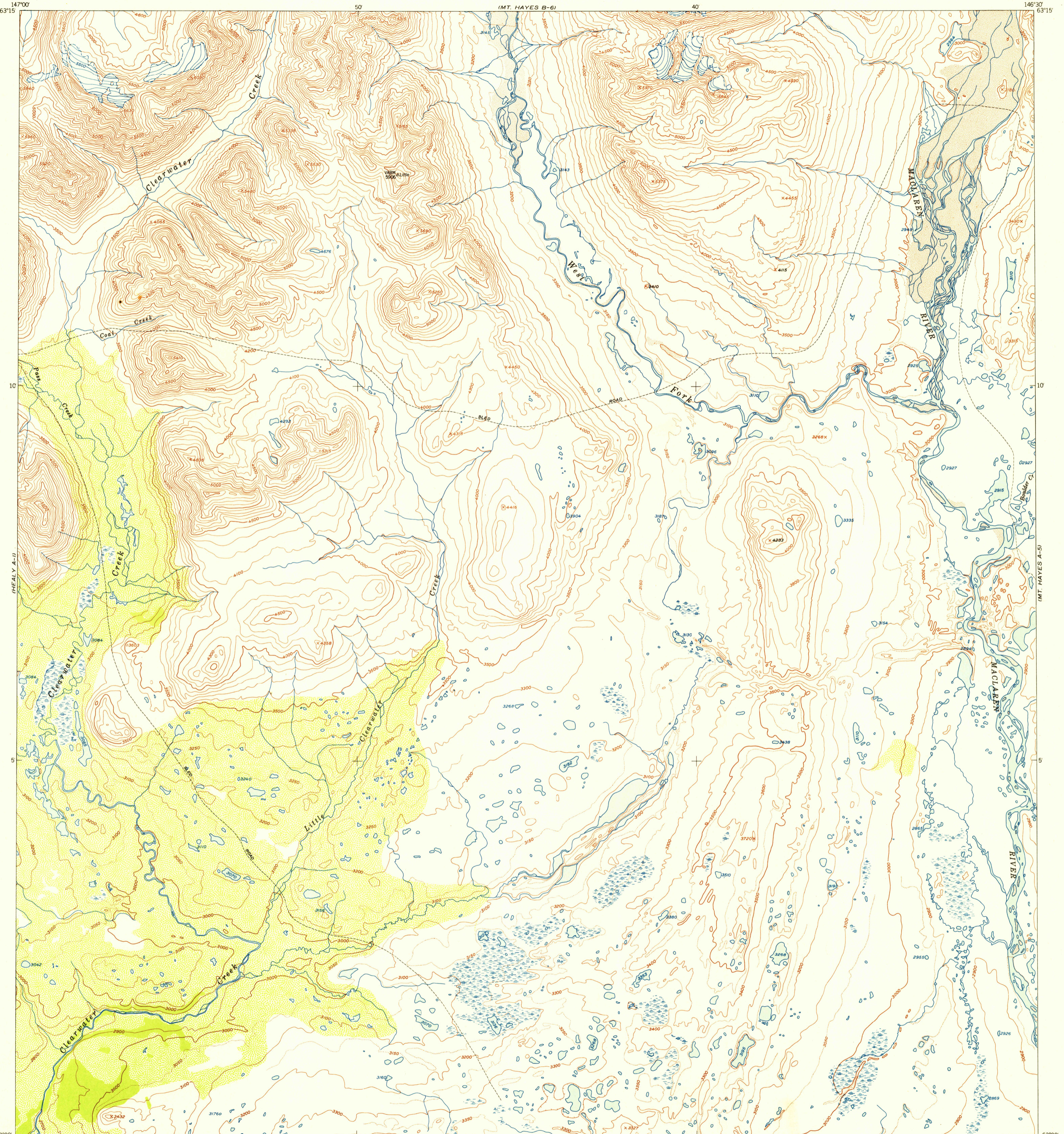


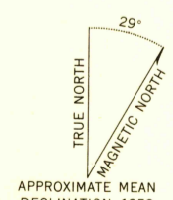
(HEALY B-1)

U.S.G.S.
FILE COPY
Inspection and Editing

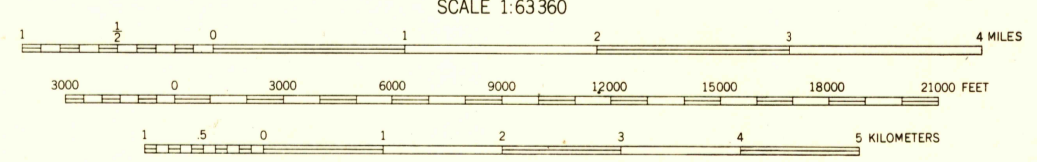
(MT. HAYES B-5)



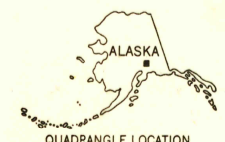
Mapped, edited, and published by the Geological Survey
Control by USGS and USCE
Topography from aerial photographs by multiplex methods 1952
Aerial photographs taken 1950
Universal Transverse Mercator projection, zone 6
1927 North American datum
Unchecked elevations are shown in brown and blue



APPROXIMATE MEAN
DECLINATION, 1952



USGS
Historical File
Topographic Division



QUADRANGLE LOCATION

ROAD CLASSIFICATION

ALL WEATHER ROADS	DRY WEATHER ROADS
Hard-surface.....None	Improved dirt.....None
Other.....None	Unimproved dirt.....None
Trails.....	

MT. HAYES (A-6), ALASKA
N6300—W14630/15X30

1952

FOR SALE BY U. S. GEOLOGICAL SURVEY, FEDERAL CENTER, DENVER, COLORADO OR WASHINGTON 25, D. C.
A FOLDER DESCRIBING TOPOGRAPHIC MAPS AND SYMBOLS IS AVAILABLE ON REQUEST

U.S.G.S.
FILE COPY
Inspection and Editing

DEC 16 1953
2050