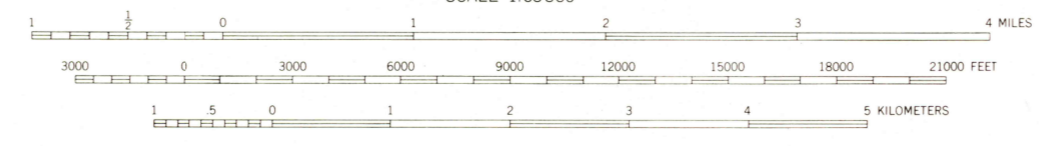
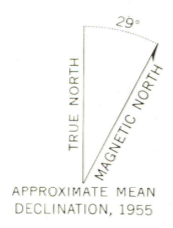


Mapped, edited, and published by the Geological Survey  
Control by USGS  
Topography by photogrammetric methods from aerial photographs  
taken 1954, field annotated 1955. Map not field checked  
Universal Transverse Mercator projection, 1927 North American datum  
10,000 foot grid based on Alaska coordinate system, zone 3  
1000-meter Universal Transverse Mercator grid ticks,  
zone 6, shown in blue  
Land lines represent unsurveyed and unmarked locations  
predetermined by the Bureau of Land Management  
Folio F. 9, Fairbanks Meridian



CONTOUR INTERVAL 100 FEET  
NATIONAL GEODETIC VERTICAL DATUM OF 1929

FOR SALE BY U. S. GEOLOGICAL SURVEY  
FAIRBANKS, ALASKA 99701, DENVER, COLORADO 80225, OR RESTON, VIRGINIA 22092  
A FOLDER DESCRIBING TOPOGRAPHIC MAPS AND SYMBOLS IS AVAILABLE ON REQUEST



ROAD CLASSIFICATION  
No roads or trails in this area

JUL 11 1978  
MT. HAYES (B-3), ALASKA  
N6315-W14500/15X30

USGS  
Historical File  
Topographic Division

1955  
MINOR REVISIONS 1963

2300