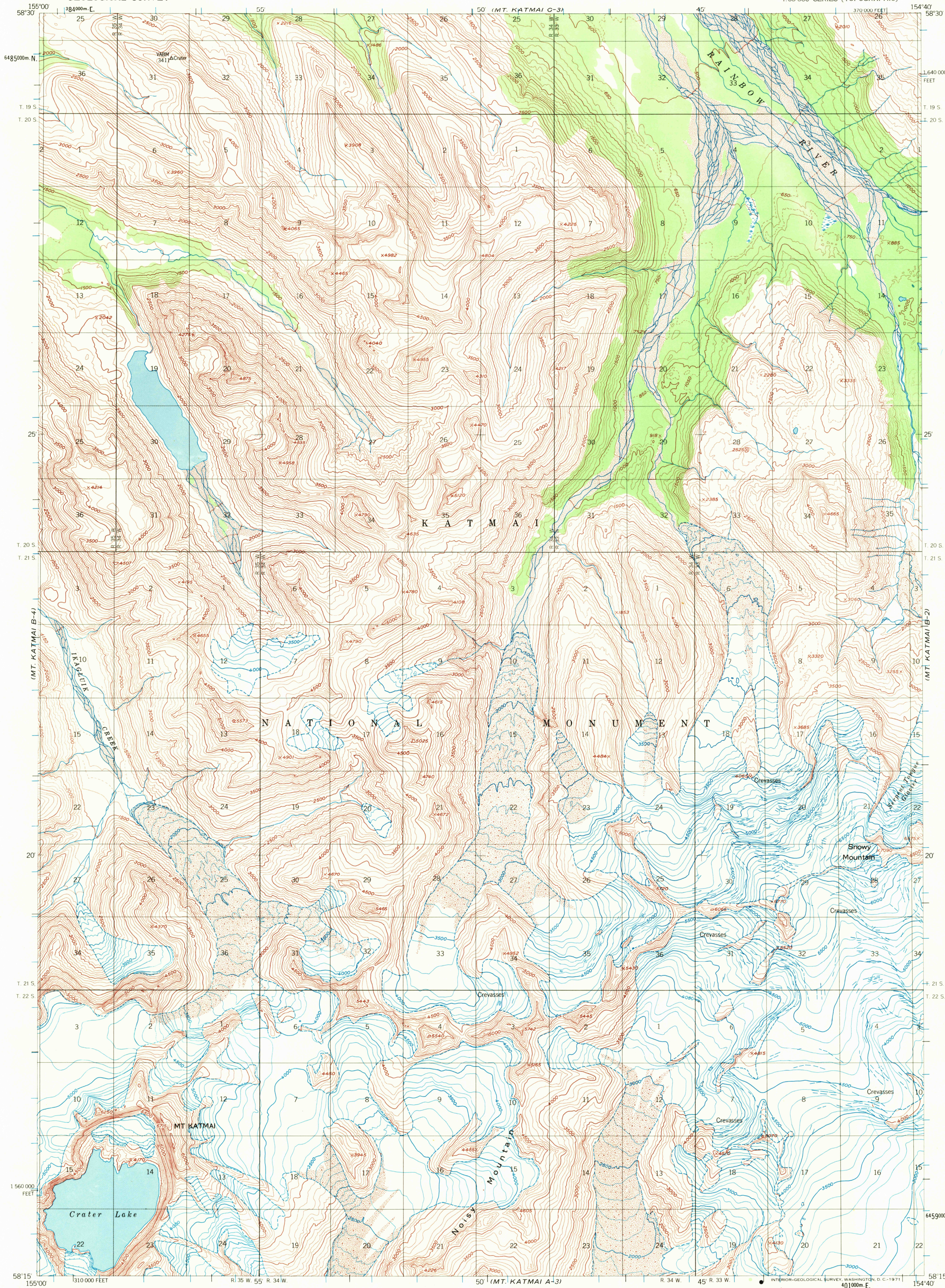


UNITED STATES
DEPARTMENT OF THE INTERIOR
GEOLOGICAL SURVEY

MT. KATMAI (B-3) QUADRANGLE
ALASKA
1:63 360 SERIES (TOPOGRAPHIC)



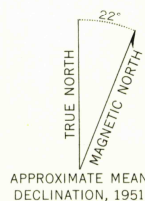
Mapped, edited, and published by the Geological Survey
Control by USCE

Topography by photogrammetric methods from aerial photographs
taken 1951. Map not field checked

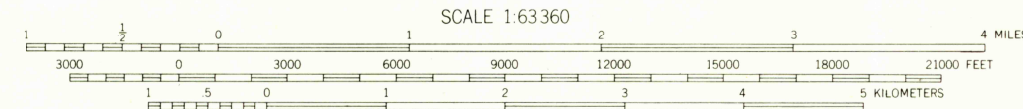
Universal Transverse Mercator projection, 1927 North American datum
10,000-foot grid based on Alaska coordinate system, zone 5
1,000-meter Universal Transverse Mercator grid ticks,
zone 5, shown in blue

Land lines represent unsurveyed and unmarked locations
predetermined by the Bureau of Land Management
Folio S-22, Seward Meridian

Swamps, as portrayed, indicate only the wetter areas,
usually of low relief, as interpreted from aerial photographs



APPROXIMATE MEAN
DECLINATION, 1951



CONTOUR INTERVAL 100 FEET
DASHED LINES REPRESENT 50 FOOT CONTOURS
DATUM IS MEAN SEA LEVEL

FOR SALE BY U. S. GEOLOGICAL SURVEY
FAIRBANKS, ALASKA 99701, DENVER, COLORADO 80225, OR WASHINGTON, D. C. 20242
A FOLDER DESCRIBING TOPOGRAPHIC MAPS AND SYMBOLS IS AVAILABLE ON REQUEST



QUADRANGLE LOCATION

ROAD CLASSIFICATION
No roads or trails in this area

MT. KATMAI (B-3), ALASKA
N5815-W15440/15X20

1951
MINOR REVISIONS 1970

U.S.G.S.
FILE COPY
TOPOGRAPHIC DIVISION

APR 7 1971