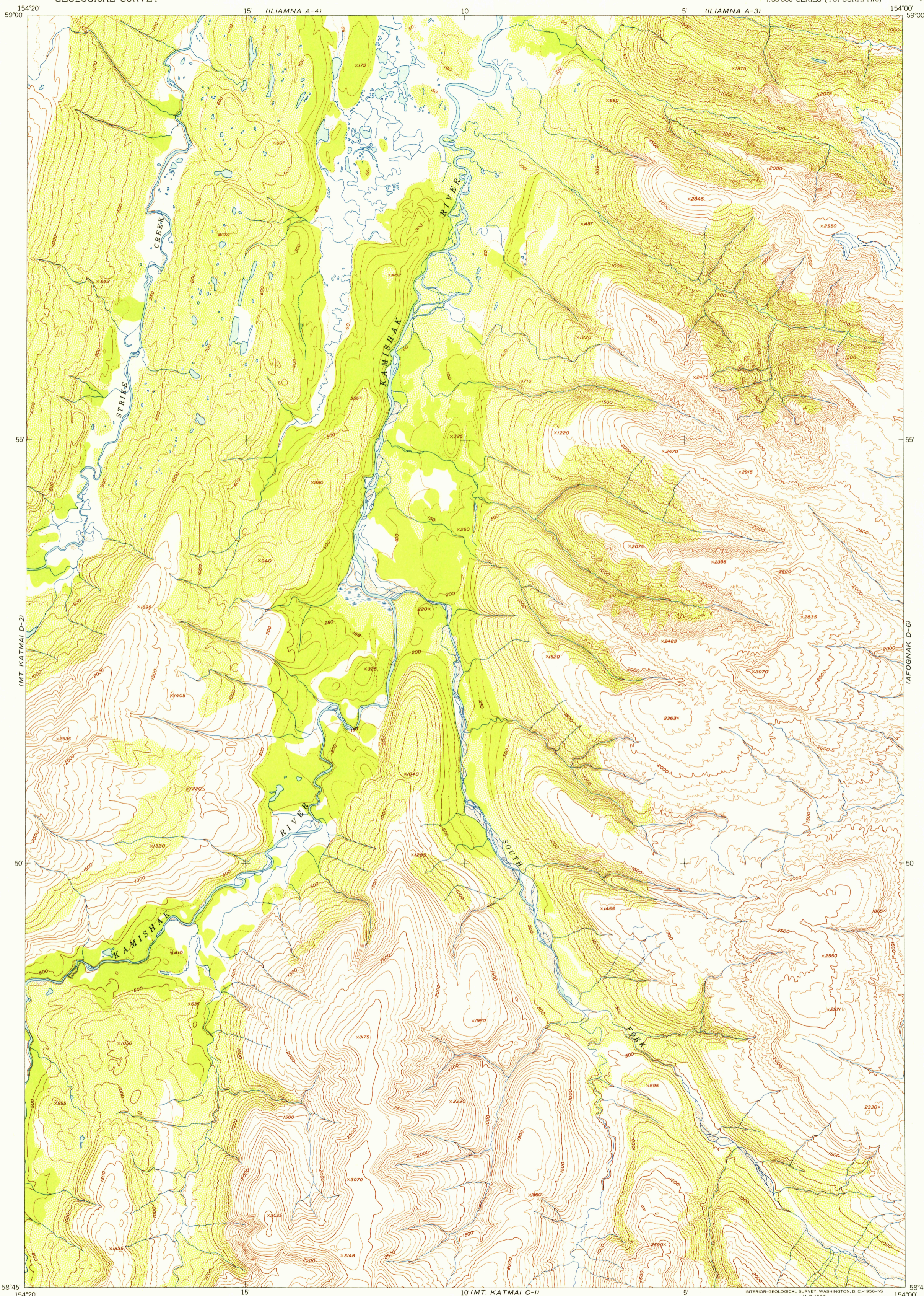


UNITED STATES
DEPARTMENT OF THE INTERIOR
GEOLOGICAL SURVEY

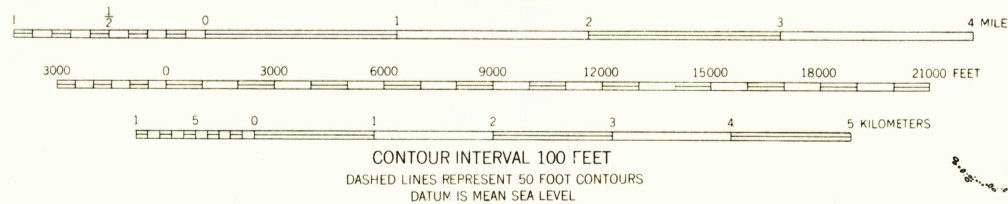
MT. KATMAI (D-1) QUADRANGLE
ALASKA—THIRD JUDICIAL DIVISION
1:63 360 SERIES (TOPOGRAPHIC)

U.S.G.S.
FILE COPY
TOPOGRAPHIC DIVISION



Mapped, edited, and published by the Geological Survey
Control by USCE
Topography from aerial photographs by multiplex methods 1954
Aerial photographs taken 1951. Map not field checked
Universal Transverse Mercator projection, zone 5
1927 North American datum
Unchecked elevations are shown in brown

TRUE NORTH
MAGNETIC NORTH
APPROXIMATE MEAN
DECLINATION, 1954



ROAD CLASSIFICATION
ALL WEATHER ROADS DRY WEATHER ROADS
Hard surface..... None Improved dirt..... None
Other..... None Unimproved dirt..... None
Trails..... None

MT. KATMAI (D-1), ALASKA
N5845—W15400/15X20
1951

FOR SALE BY U.S. GEOLOGICAL SURVEY
FAIRBANKS, ALASKA FEDERAL CENTER, DENVER, COLORADO WASHINGTON 25, D.C.
A FOLDER DESCRIBING TOPOGRAPHIC MAPS AND SYMBOLS IS AVAILABLE ON REQUEST

U.S.G.S.
FILE COPY
TOPOGRAPHIC DIVISION

USGS
Historical File
Topographic Division

MAY 1 1956

2070