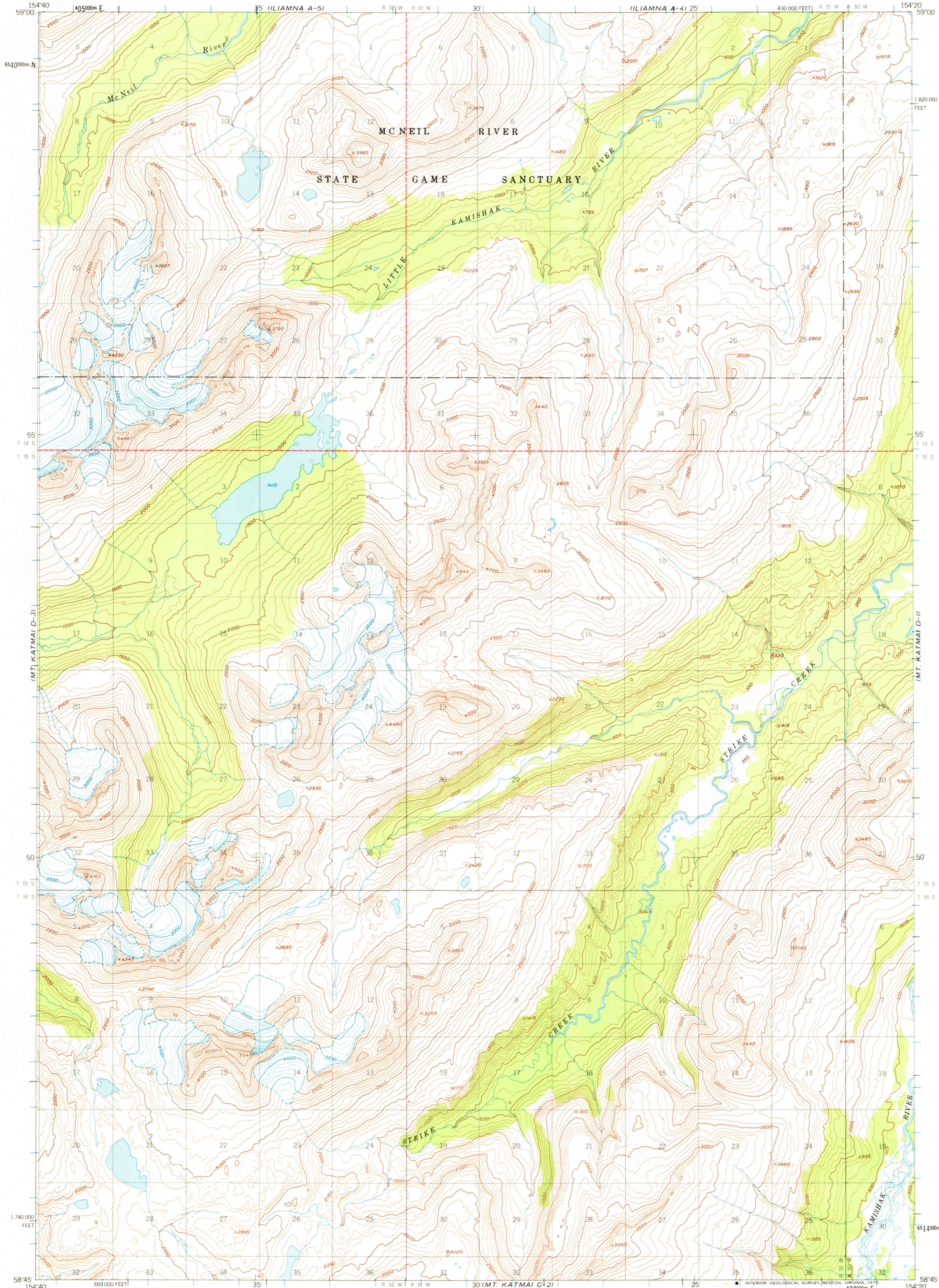


ILIAMNA A-5

UNITED STATES
DEPARTMENT OF THE INTERIOR
GEOLOGICAL SURVEY

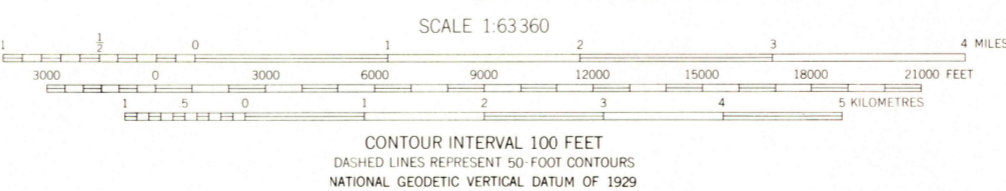
MT. KATMAI (D-2) QUADRANGLE
ALASKA-KENAI PENINSULA BOROUGH
1:63 360 SERIES (TOPOGRAPHIC)

ILIAMNA A-4



MT. KATMAI C-3

Mapped, edited, and published by the Geological Survey
Control by USCE
Topography by photogrammetric methods from aerial photographs taken 1951. Map not field checked
Universal Transverse Mercator projection, 1927 North American datum
10,000 foot grid based on Alaska coordinate system, zone 5
1000 metre Universal Transverse Mercator grid ticks, zone 5, shown in blue
Gray land lines represent unsurveyed and unmarked locations predetermined by the Bureau of Land Management.
Folio S-22, Seward Meridian



ROAD CLASSIFICATION
No roads or trails in this area

FOR SALE BY U. S. GEOLOGICAL SURVEY
FAIRBANKS, ALASKA 99701, DENVER, COLORADO 80225, OR RESTON, VIRGINIA 22092
A FOLDER DESCRIBING TOPOGRAPHIC MAPS AND SYMBOLS IS AVAILABLE ON REQUEST

MT. KATMAI (D-2), ALASKA
N5845-W15420/15X20

USGS
HISTORICAL FILE
TOPOGRAPHIC DIVISION

DEC 18 1975

1951
MINOR REVISIONS 1973