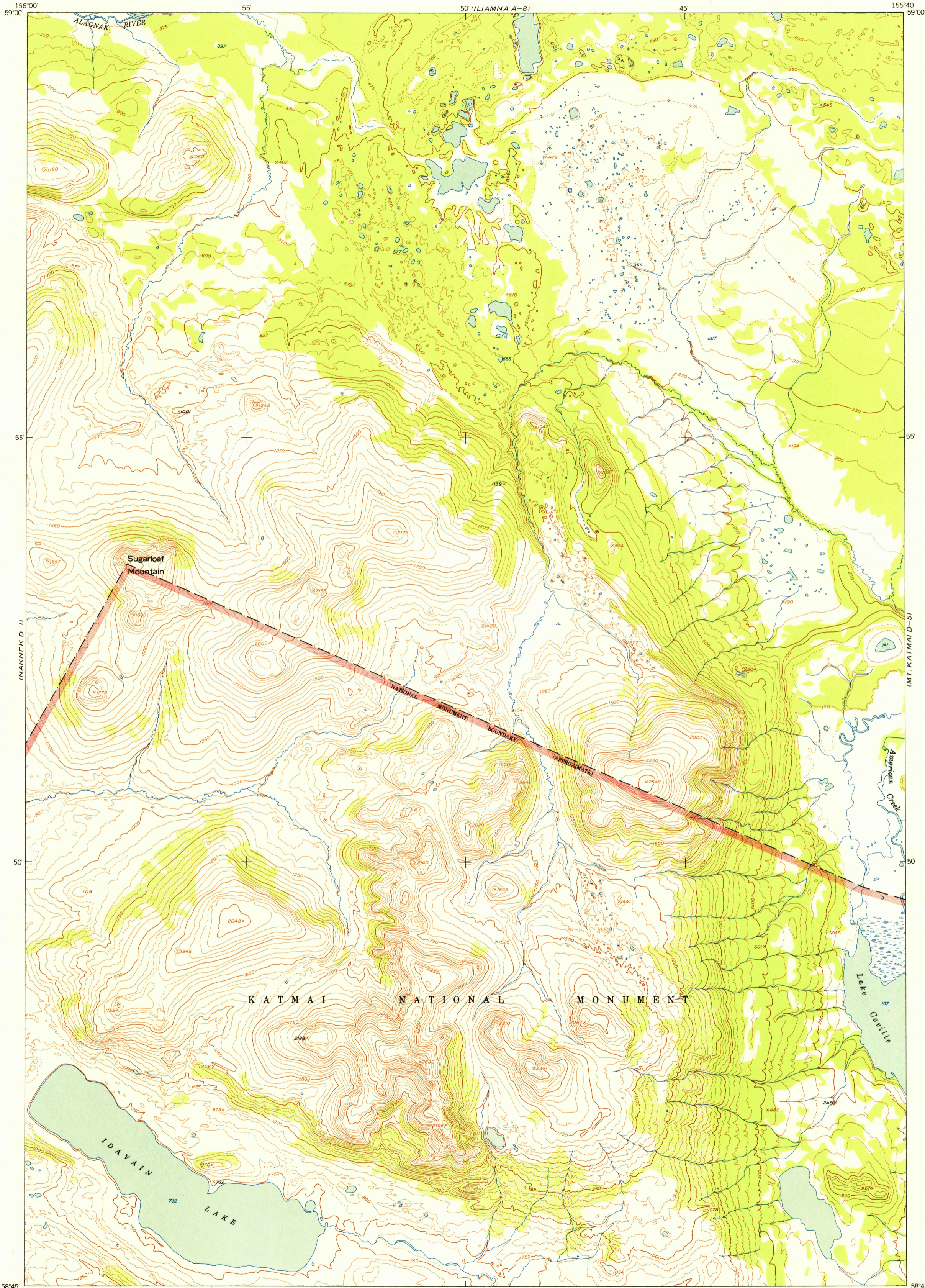


(DILLINGHAM A-1)

UNITED STATES
DEPARTMENT OF THE INTERIOR
GEOLOGICAL SURVEY

MT. KATMAI (D-6) QUADRANGLE
ALASKA—THIRD JUDICIAL DIVISION
1:63 360 SERIES (TOPOGRAPHIC)

(ILIAMNA A-8)



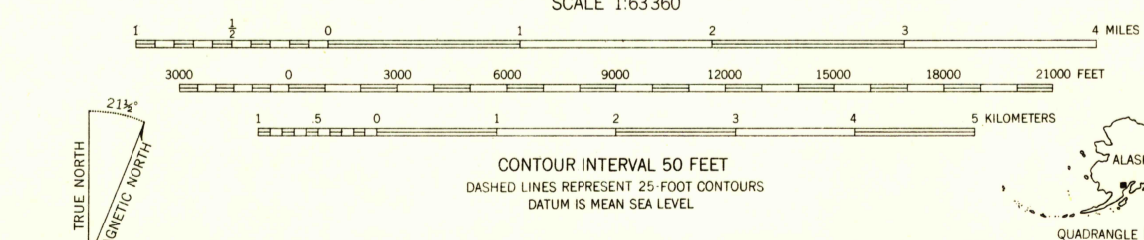
U.S.G.S.
FILE COPY
TOPOGRAPHIC DIVISION

U.S.G.S.
FILE COPY
TOPOGRAPHIC DIVISION

USGS
Historical File
Topographic Division

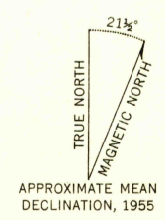
156°00' 59'00" 55' 50' (MT. KATMAI C-6) 45' 58'45"

Mapped, edited, and published by the Geological Survey
Control by USCE
Topography from aerial photographs by multiplex methods 1955
Aerial photographs taken 1951. Map not field checked
Universal Transverse Mercator projection, zone 5
1927 North American datum
Unchecked elevations are shown in brown and blue



ROAD CLASSIFICATION

ALL WEATHER ROADS	DRY WEATHER ROADS
Hard-surface _____ None	Improved dirt _____ None
Other _____ None	Unimproved dirt _____ None
	Trails _____ None



FOR SALE BY U.S. GEOLOGICAL SURVEY
FAIRBANKS, ALASKA FEDERAL CENTER, DENVER, COLORADO WASHINGTON 25, D.C.
A FOLDER DESCRIBING TOPOGRAPHIC MAPS AND SYMBOLS IS AVAILABLE ON REQUEST

MT. KATMAI (D-6). ALASKA
N5845—W15540/15X20
1951

JUL 3 1956

2095